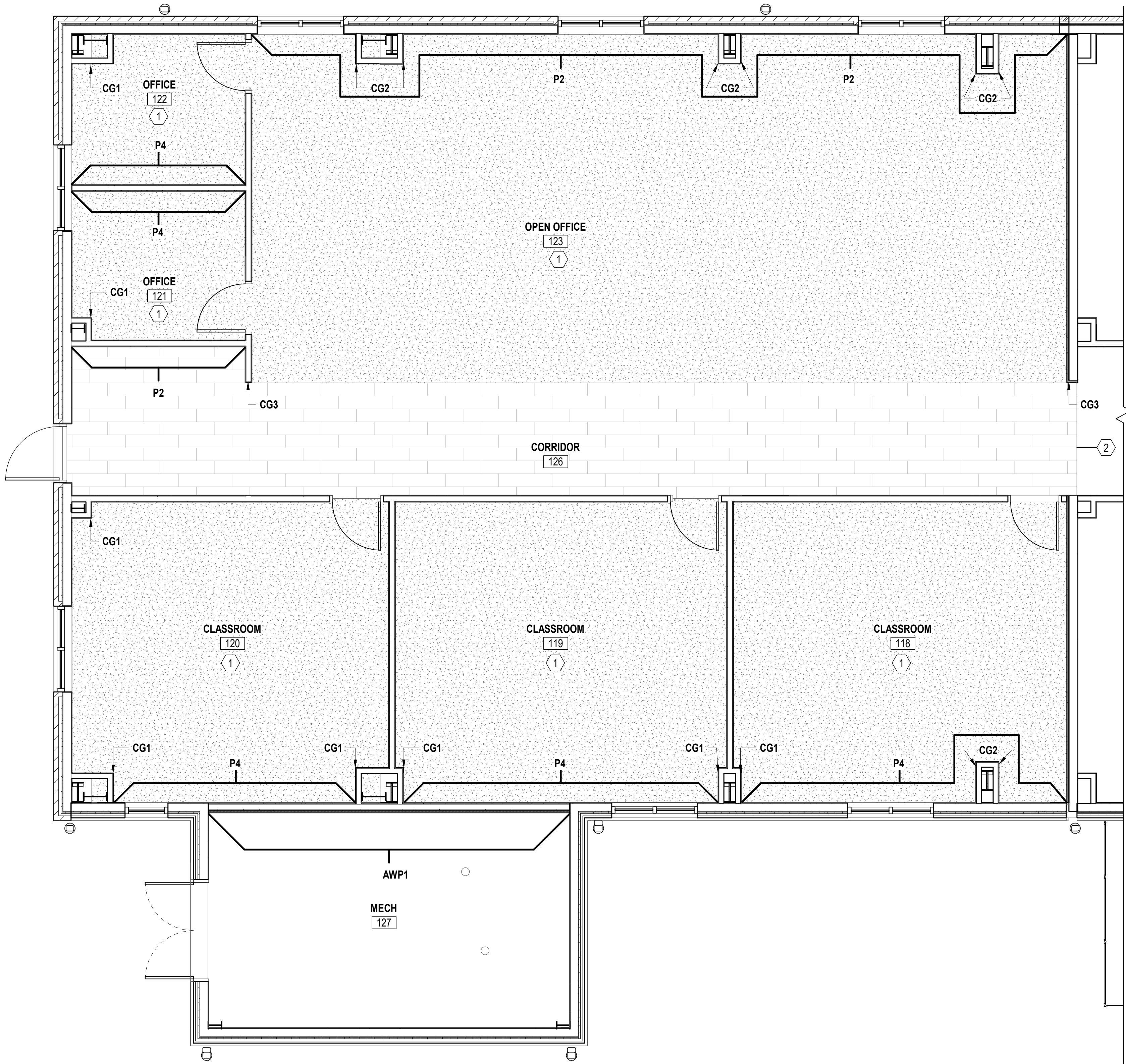


10/6/2022 2:34:53 PM IN101
P:\NC\Camp Lejeune\MLCON2021_1701640_P1555_CulturalAssimilationExpansionB_Design\DWGS\Model\09_INT\1555-1701640-R21.rvt



FINISH PLAN - ADDITION

SCALE: 1/4" = 1'-0"

GENERAL SHEET NOTES

- FOR QUESTIONS REGARDING INTERIOR DESIGN DRAWINGS AND SPECIFICATIONS CONTACT: NAVFAC OFFICE IN CHARGE OF CONSTRUCTION (OICC). SEE IN601 FOR FINISH LEGEND AND FINISH SCHEDULE.
- FINISH ITEMS ARE NOT TO BE SUBSTITUTED DUE TO ORDERING LEAD TIMES. IT IS THE CONTRACTOR'S RESPONSIBILITY TO ORDER ALL MATERIALS IN TIME TO AVOID DELAYS.
- COORDINATE THERMOSTAT LOCATION WITH MECHANICAL DRAWINGS AND CONSTRUCTION MANAGER. INSTALL THERMOSTATS NEAR A CORNER OF THE ROOM OR BY LIGHT SWITCHES. DO NOT INSTALL THERMOSTATS IN THE CENTER OF A WALL.
- SPRAY PAINT ELECTRICAL PANELS, ACCESS PANELS, AND EXPANSION JOINTS TO MATCH THE ADJACENT WALL COLOR. PANELS PAINTED BY BRUSH ARE NOT ACCEPTABLE.
- TRANSITIONS MUST MEET ABA GUIDELINES.
- TRANSITIONS OCCURRING UNDER DOORS MUST BE CENTERED UNDER DOOR.
- PROVIDE CORNER GUARDS (CG) ON ALL OUTSIDE CORNERS INCLUDING EXISTING FACILITY NOT SHOWN ON PLAN. MATCH CORNER GUARDS TO WALL COLOR. SEE FINISH SCHEDULE ON SHEET IN601.
- PAINT ALL EXPOSED SURFACES AND COMPONENTS ABOVE 9'-4" AND INCLUDING CEILING STRUCTURE (P3) EXCEPT BLACK LINER FABRIC, LIGHT FIXTURES AND FIRE PROTECTION SYSTEM.

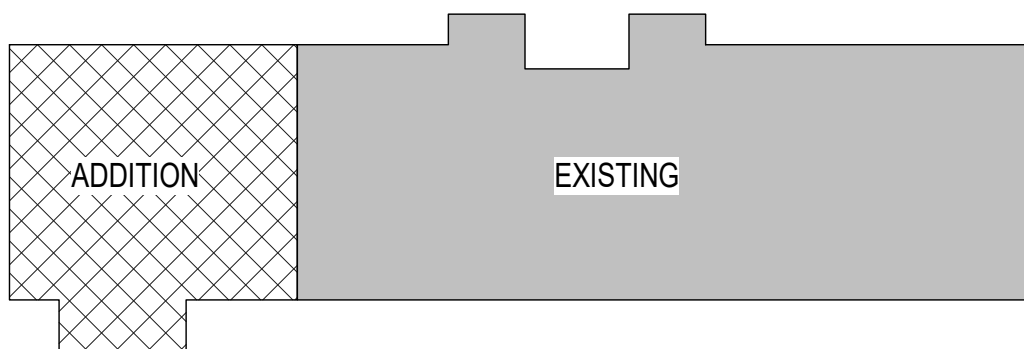
KEYNOTES

- BID ALTERNATE: PROVIDE PRICE FOR REPLACING CPT1 WITH LVT1 AS INDICATED ON ROOM FINISH SCHEDULE IN601.
- REMOVE PARTIAL PLANKS WHERE EXISTING LVT MEETING NEW LVT AND INSTAL NEW FULL PLANK TO MINIMIZE APPEARANCE OF TRANSITION. MATCH EXISTING CORRIDOR PATTERN THROUGHOUT.

FINISH LEGEND

	LVT
	CARPET
	SEALED CONCRETE

KEY PLAN



GRAPHIC SCALE(S)

1/4" = 1' - 0"



APPROVED				AVE INFO
FOR COMMANDER NAVFAC				
ACTIVITY Approved by Sofia Schwartz, Asset Management Branch Director, PWD G-F, MCEAST-MCB Camp Lejeune, via Email				
SATISFACTORY TO DATE		10/05/2022		
DES	DEP	DRW	MHM	CHK VAP
PM/DM		CJW/MDM		
BRANCH MANAGER		JDW		
CHIEF ENDORSE		EJA		
FIRE PROTECTION		DSN		

DEPARTMENT OF THE NAVY
NAVAL FACILITIES ENGINEERING SYSTEMS COMMAND
MID-ATLANTIC
MID-ATLANTIC
NAVAL STATION - NORFOLK, VA
CAMP LEJEUNE
JACKSONVILLE, NORTH CAROLINA
CULTURAL ASSIMILATION EXPANSION

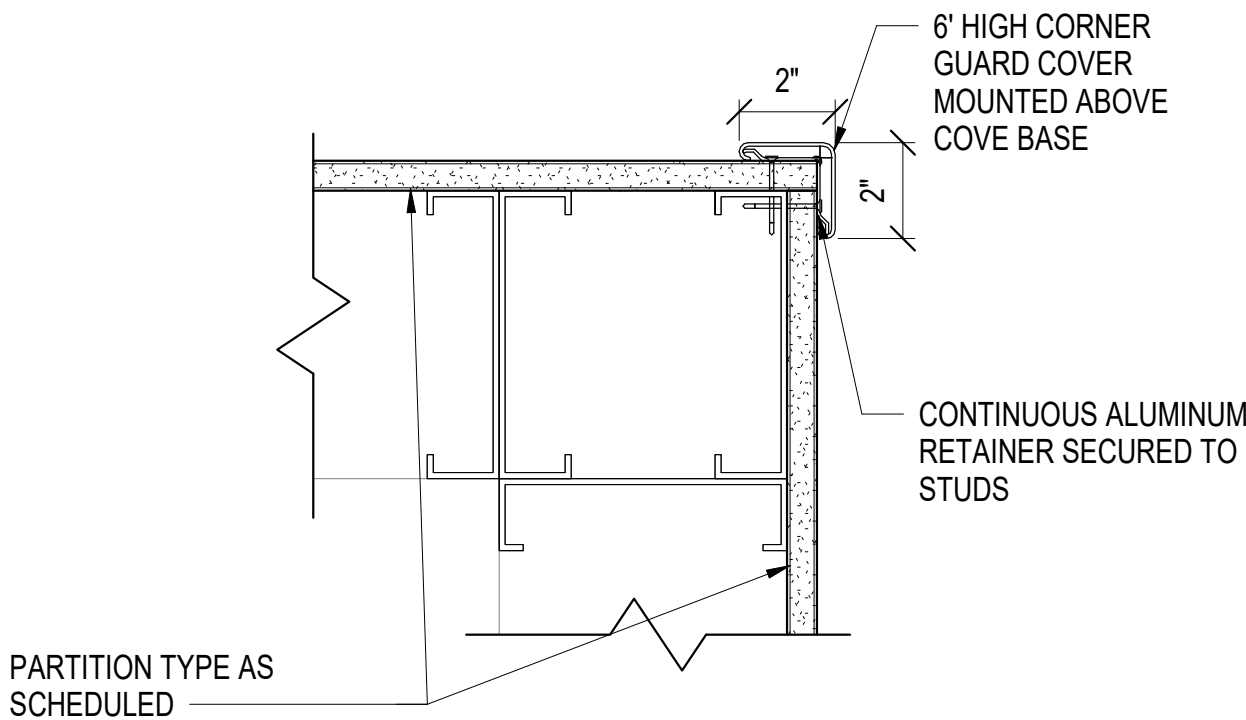
SCALE: AS NOTED
EPROJCT NO.: 1701640
CONSTR. CONTR. NO.

NAVFAC DRAWING NO.
12869933
SHEET 92 OF 142

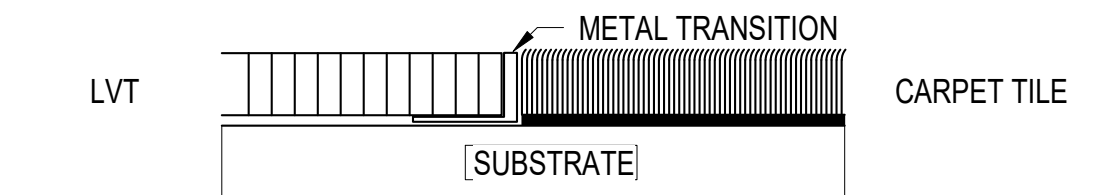
IN101

DRAWING REVISION: 25 AUGUST 2020

10/6/2022 2:34:56 PM IN601 P:\NCComp\LejeuneMILCON021_1701640_P1555_CulturalAssimilationExpanB_Design\DWGSModel\09_INTP1555-1701640-R21.rvt



B1 CORNER GUARD DETAIL
SCALE: 3" = 1'-0"



NOTE: AT ROOMS - METAL FLOORING TRANSITION FINISH TO MATCH METAL WALL TRANSITIONS DILEX AHK-AT SATIN NICKEL ANODIZED ALUMINUM

A1 FLOORING TRANSITION DETAILS
SCALE: NOT TO SCALE

FINISH SCHEDULE - FIRST FLOOR										
ROOM		FLOOR	BASE	CEILING		WALL				NOTES
NO.	NAME			FINISH	HEIGHT	NORTH FINISH	EAST FINISH	SOUTH FINISH	WEST FINISH	
118	CLASSROOM	CPT1	RB1	P3	-	P1 / P3	P1 / P3 / CG1	P4 / P3 / CG1	P1 / P3 / CG1	1, 2, 3, 4, 5, 6, 7
119	CLASSROOM	CPT1	RB1	P3	-	P1 / P3	P1 / P3 / CG1	P4 / P3 / CG1	P1 / P3 / CG1	1, 2, 3, 4, 5, 6, 7
120	CLASSROOM	CPT1	RB1	P3	-	P1 / P3 / CG1	P1 / P3 / CG1	P4 / P3 / CG1	P1 / P3 / CG1	1, 2, 3, 4, 5, 6, 7
121	OFFICE	CPT1	RB1	ACT1	9'-4"	P4 / P3	P1 / P3	P1 / P3 / CG1	P1 / P3 / CG1	1, 2, 3, 4, 5, 6, 7
122	OFFICE	CPT1	RB1	ACT1	9'-4"	P1 / P3 / CG1	P1 / P3	P4 / P3	P1 / P3 / CG1	1, 2, 3, 4, 5, 6, 7
123	OPEN OFFICE	CPT1	RB1	P3	-	P2 / P3 / CG2	P1 / P3	-	P1 / P3	1, 2, 3, 4, 5, 6, 7
126	CORRIDOR	LVT1	RB1	P3, ACT1	SEE RCP	P2 / P3 / CG3	-	P1 / P3	P1 / P3	4,5,7
127	MECH	SC1	RB1	EXPOSED	-	P5	-	-	-	

FINISH SCHEDULE NOTES	
1	ALL WINDOW SILLS TO BE SS1 TO MATCH EXISTING BUILDING. SEE DETAIL A3/AE603.
2	INSTALL WINDOW BLINDS ON EXTERIOR WINDOWS TO MATCH EXISTING.
3	WOOD DOORS STAINED TO MATCH EXISTING DOORS. SEE SHEET AE-601 FOR DOOR AND FRAME TYPES.
4	ALL EXPOSED INTERIOR PARTITION CORNERS ARE TO RECEIVE A CORNER GUARD. SEE DETAIL B1/IN601. END WALLS TO RECEIVE DUAL CORNER GUARDS WITH FILLER. MATCH PARTITION COLOR WITH GUARD.
5	PAINT PARTITIONS 9'-4" AND ABOVE P-3.
6	BID ALTERNATE: REPLACE CPT1 WITH LVT1. SEE PRICE SCHEDULE.
7	PAINT ACCENT WALLS AS INDICATED ON IN101.

FINISH LEGEND KEY				
FINISH TAG	FINISH	MANUFACTURER	STYLE / TYPE	COLOR
ACT1	ACOUSTICAL CEILING TILE	ARMSTRONG	24" X 24" X 7/8" FINE FISSURED, HIGH NRC/ 1756	WHITE
ACTG1	ACOUSTICAL CEILING TILE GRID	ARMSTRONG	PRELUDE XL 15/16" EXPOSED TEE	BLIZZARD WHITE
AWP1	ACOUSTICAL WALL PANEL	ASI	SOUND SILENCER-1" THICK SOUND ABSORPTION PANEL, STC 9 RATING	WHITE
CG1	CORNER GUARD	INPRO	168BN; 2" WINGS	GALA 0380 TO MATCH P1
CG2	CORNER GUARD	INPRO	168BB 2" WINGS	STERLING 0283 MATCH P2
CG3	CORNER GUARD WITH FILLER	INPRO	168DBN; 2" WINGS WITH FILLER	GALA 0380 TO MATCH P1
CPT1	CARPET TILE	PATCRAFT	24" X 24" TILE I0396 PROSE	00340 WISHING WELL
LVT1	LUXURY VINYL TILE	MOHAWK	SECOYA 9" X 59" PLANKS	CONVERSE BASIN
P1	PAINT	SHERWIN WILLIAMS	-	SW9165 GOSSAMER VEIL: FIELD PAINT-SHEEN / EGGSHELL; DOOR TRIM PAINT - SHEEN / SEMI-GLOSS
P2	PAINT-ACCENT	SHERWIN WILLIAMS	-	SW7624 SLATE TILE: ACCENT PAINT-SHEEN-EGGSHELL
P3	PAINT-BLACK	SHERWIN WILLIAMS	-	SW6991 BLACK MAGIC: PAINT STRUCTURE AND WALL ABOVE 9'-4" - SHEEN / FLAT
P4	PAINT-ACCENT	SHERWIN WILLIAMS	-	SW0037 MORRIS ROOM GREY: ACCENT PAINT-SHEEN / EGGSHELL
P5	PAINT-EPOXY	SHERWIN WILLIAMS	-	SW9165 GOSSAMER VEIL: EPOXY
RB1	RUBBER BASE	JOHNSONITE	4" RUBBER COVE-COIL	#32 PEBBLE
SC1	SEALED CONCRETE	-	-	-
SG1	SIGNAGE	MOHAWK	BACKGROUND	TAUPE #190-VERIFY IN THE FIELD
SG2	SIGNAGE	MOHAWK	TEXT	WHITE #255
SS1	SOLID SURFACE-WINDOW STOOL	CORIAN	-	RAIN CLOUD
TS1	TRANSITIONS STRIP	SCHLUTER	DILEX-AHK-AT	SATIN NICKEL ANODIZED ALUM
WD1	DOOR STAIN	OSHKOSH DOOR	MAPLE VENEER	600-1550 CHESTNUT
WT1	WINDOW BLINDS-1"	BALI	BRUSHED ALUMINUM	121 BRUSHED ALUMINUM

GENERAL SHEET NOTES

- FOR QUESTIONS REGARDING INTERIOR DESIGN DRAWINGS AND SPECIFICATIONS CONTACT: NAVFAC OFFICE IN CHARGE OF CONSTRUCTION (OICC). SEE IN601 FOR FINISH LEGEND AND FINISH SCHEDULE.
- FINISH ITEMS ARE NOT TO BE SUBSTITUTED DUE TO ORDERING LEAD TIMES. IT IS THE CONTRACTOR'S RESPONSIBILITY TO ORDER ALL MATERIALS IN TIME TO AVOID DELAYS.
- COORDINATE THERMOSTAT LOCATION WITH MECHANICAL DRAWINGS AND CONSTRUCTION MANAGER. INSTALL THERMOSTATS NEAR A CORNER OF THE ROOM OR BY LIGHT SWITCHES. DO NOT INSTALL THERMOSTATS IN THE CENTER OF A WALL.
- SPRAY PAINT ELECTRICAL PANELS, ACCESS PANELS, AND EXPANSION JOINTS TO MATCH THE ADJACENT WALL COLOR. PANELS PAINTED BY BRUSH ARE NOT ACCEPTABLE.
- TRANSITIONS MUST MEET ABA GUIDELINES.
- TRANSITIONS OCCURRING UNDER DOORS MUST BE CENTERED UNDER DOOR.
- PROVIDE CORNER GUARDS (CG) ON ALL OUTSIDE CORNERS INCLUDING EXISTING FACILITY NOT SHOWN ON PLAN. MATCH CORNER GUARDS TO WALL COLOR. SEE FINISH SCHEDULE ON SHEET IN601.
- PAINT ALL EXPOSED SURFACES AND COMPONENTS ABOVE 9'-4" AND INCLUDING CEILING STRUCTURE (P3) EXCEPT BLACK LINER FABRIC, LIGHT FIXTURES AND FIRE PROTECTION SYSTEM.



APPROVED

FOR COMMANDER NAVFAC

ACTIVITY Approved by Sofia Schwartz, Asset Management Branch Director, PWD G-F, MCIEAST-MCB Camp Lejeune, via Email

SATISFACTORY TO DATE 10/05/2022

DES DEP DRW MHM CHK VAP

PMDM CJW/MDM

BRANCH MANAGER JDW

CHIEF ENGINEER EJA

FIRE PROTECTION DSN

DEPARTMENT OF THE NAVY
NAVAL FACILITIES ENGINEERING SYSTEMS COMMAND
NAVAL FACILITIES ENGINEERING SYSTEMS COMMAND - MID-ATLANTIC
MID-ATLANTIC DIVISION
NAVAL STATION - NORFOLK, VA
CAMP LEJEUNE
JACKSONVILLE, NORTH CAROLINA
CULTURAL ASSIMILATION EXPANSION
INTERIOR FINISH LEGEND, SCHEDULE AND DETAILS

GRAPHIC SCALE(S)

3" = 1' - 0"



SCALE: AS NOTED
PROJECT NO.: 1701640
CONSTR. CONTR. NO.
NAVFAC DRAWING NO. 12869934
SHEET 93 OF 142

IN601

DRAWING REVISION: 25 AUGUST 2020