

INTERIOR DESIGN TEAM CONTACT LIST
Project: #20-0069
Repair BEQHP512, MCB Camp Lejeune, NC

GAIL COLE, NCIDQ
COLE DESIGN ASSOCIATES
648 VILLAGE PARK DRIVE, UNIT 203
WILMINGTON, NC 28405
336-689-1464
gcole@coledesignassociates.com

BETH WALKER, AIA, NCARB, LEED AP
THE WALKER GROUP ARCHITECTURE, INC.
PO BOX 541
NEW BERN, NC 28563
252-636-8778
beth@wgarc.com

FFE Design Analysis
Project # 20-0069
Repair BEQHP512, MCB Camp Lejeune, NC

Provide furniture, fixture, and equipment specifications for Dormitory Rooms, Office and Lounges for a 3 story building on Marine Corps Base in Camp Lejeune, NC.

Dorm Rooms (144 2- person room) : Provide the following furniture for each dorm room:

- Bed with headboard and mattress for each resident
- Underbed storage for each resident
- Nightstand for each resident
- Table Desk for each resident
- Trash Receptacle for each resident
- 1 Refrigerator /Microwave
- 1 Wall Clock

Lounge Rooms (2nd and 3rd Floor): Provide the following furniture for each lounge room:

- Recycling trash receptable
- Trash receptacle for recycling
- Trash receptacle for general trash
- Wall Clock
- 2 bar height 36" diameter café tables
- 8 bar stools
- 10 Lounge Chairs with Arms
- 10 Ottomans

Office (1st Floor only)

- L-shape desk, 70" x 30" Desk with 60" x 24" return
- Desk Task Chair
- 2 Guest Chairs
- Wardrobe
- Magnetic White Board
- Wall Clock
- Trash Receptacle





HP 512 FURNITURE, FIXTURES, & EQUIPMENT SCHEDULE		100%	1ST	1ST	2ND		3RD	
ITEM NO.	ITEM	QTY	TYPICAL DORM ROOM	TYPICAL OFFICE	TYPICAL DORM ROOM	TYPICAL LOUNGE	TYPICAL DORM ROOM	TYPICAL LOUNGE
A1	WALL CLOCK 12" DIA.	145	48	1	48		48	
A2	TRASH RECEPTACLE WITH STEP MECHANISM	2				1		1
A3	TRASH RECYCLING RECEPTACLE	2				1		1
A4	TRASH RECEPTACLE SMALL (FOR EACH RESIDENT)	289	96	1	96		96	
A5	WALL CLOCK 16.5 DIA.	2				1		1
A6	MAGNETIC WHITE BOARD 48" X 36"	1		1				
B1	BED	288	96		96		96	
B2	BED TWIN MATTRESS	288	96		96		96	
C1	DESK CHAIR	288	96		96		96	
C2	BAR STOOL	16				8		8
C3	LOUNGE CHAIR	20				10		10
C4	OTTOMAN	20				10		10
C5	OFFICE TASK CHAIR	1		1				
C6	GUEST CHAIR CLOSED OFFICE	2		2				
D1	DESK WITH 60" RETURN (RIGHT RETURN)	1		1				
E1	REFRIGERATOR/MICROWAVE COMBO	144	48		48		48	
S1	NIGHTSTAND	288	96		96		96	
S2	UNDERBUNK 2 DRAWER STORAGE	576	192		192		192	
S3	WARDROBE FOR CLOSED OFFICE	1		1				
T1	WRITING TABLE	288	96		96		96	
T2	BAR HEIGHT BASE AND TOP	4				2		2
M-1	MISC. GLIDE KIT FOR BEDS	288	96		96		96	






PROJECT NUMBER, NAME, LOCATION: 20-0069, Repair BEQ HP512, MCB Camp Lejeune, NC
BPA CONTRACT NAME AND NUMBER:
DEALER NAME:



REQUEST FOR PRICING




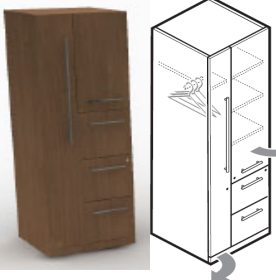
PART 1: Vendor Pricing




PLEASE NOTE: Technical Performance Criteria takes precedence over the basis of design examples provided on this spreadsheet.

BASIS OF DESIGN				PROPOSED ITEMS				
ITEM	DESCRIPTION	PHOTO or DWG	QTY	MFR/SERIES NAME or MODEL # & FEATURES	PHOTO or DWG	QTY	NET PRICE	EXT. NET
A1	WALL CLOCK Selfset Wall Clock with Hardware, 12" diameter 12" diameter wallclock automatically set itself to Daylight Savings without the use of a signal. Quartz movement , white dial with black numerals, black hour and minute hand, red second hand, shatter resistant clear crystal. Battery operated movement uses one AA battery (not included) Skillcraft #NSN5573148 or equal		1					0
A2	TRASH RECEPTACLE WITH STEP MECHANISM 24 gallon painted steel waste receptacle with step mechanism with soft close, internal liner and bag ring. Closed top, adjustable glides, with Black label waste icon.. Liner capacity 16 gallons, Body finishes in Britebond Silver, top and step in Britebond Silver. 30" x 18 5/16" x 14 1/2", Magnuson Group Trada-Step or Equal		2					0
A3	TRASH RECYCLING RECEPTACLE 24 gallon painted steel waste receptacle with internal liner and bag ring. Top option opening:circle 4 1/4" diameter adjustable glides, One Black label recycling icon. Liner capacity 16 gallons, Body in Brite bond Silver and top in Britebond Silver 30" x 18 5/16" x 12 1/4" Magnuson Group Trada-01 or Equal		2					0
A4	WALL CLOCK Clock has black case, Quartz movement, AA battery supported, white dial color, black hour and minute hands, red sweep second hand, flat plastic lens, hanging hardware. 16.5" Diameter Skillcraft #NSN6238824 or equal		2					0

A5	<p>MAGNETIC WHITE BOARD</p> <p>Magnetic glass whiteboard shall have flat polished edges and square corners, brushed stainless hardware, frameless.</p> <p>Separate packs of heavy duty magnets.</p> <p>48" X 36"</p> <p>Global Industrial or Equal</p>		1					0
B1	<p>BUNKABLE LIFT DECK BED</p> <p>Frame Finish: Ebony, Laminate Finish: Wild Cherry (Wilsonart 7054-60 Wild Cherry) 86"l x 38.5"w x 37"h. Bed deck: 12 gauge, Body and Bottom: 18 gauge, End Framelegs and End frame cross members - 16 gauge, 10 year warranty. Bed deck lifts for storage.</p> <p>GS-27F-0037X</p> <p>Norix Group:#TNT601-NLXXXT or equal</p>		288					0
B2	<p>BED TWIN MATTRESS</p> <p>Sealed Seam Mattress, 36" x 80" x 6"</p> <p>Polyurethane foam core enclosed in a reinforced ripstop, fire-retardant, polyurethane coated cover with radio frequency welded seams for enhanced hygiene, csecurity and durability. Premium cover is highly-puncture resistant and inhibits tearing if puncure does occur. Mattress is fluid, crack, peel, abrasion and bed bug resistant, anti-microbial and anti-fungal. Provides a virus barrier and is resistant ot treareing and delaminating for greater infection control/ Made in USA</p> <p>Norix MRS6-3 690-W1NA-7 or Equal - OPEN MARKET</p>		288					0
C1	<p>2-POSITION METAL CHAIRMetal Upholstered chair, 19 5/16"w x 22 11/16"d x 33"h Finish: Thermoset epoxy powder coated, color: Black</p> <p>Fabric: Grade 1 _ CP135 Dillon Black Vinyl</p> <p>University Loft Company #G50114 or Equal</p>		288					0
C2	<p>BAR STOOL</p> <p>30" Bar Height Stool Plastic Seat and Back</p> <p>Black Fixed Loop Arms, Standard Mult-Surface Glides</p> <p>Overall: 25"W x 24"D x 45"H</p> <p>Sit On It: Freelance #5214 AC3 SC1 G5S2 FS AC Black shell color, Silver frame finish, Black fixed Loop arms, or Equal</p>		16					0

C3	<p>LOUNGE CHAIR with ARMS Steel frame with Lifetime structural frame warranty, upholstered cushions, injection-molded nylon feet, seat back style: square, apron style: full, standard fit with open bottom, grade B Rialto vinyl color:TBD through submittals, arm cap and feet finish: color Raven Overall size: 31"d x 31.5"w x 32.3"h</p> <p>Norix Group: #Harmony Arm Chair #LA-1 or Equal</p>		20					0
C4	<p>OTTOMAN Premium polymer one piece molded exterior skin filled with 2 part water-based polyurethane foam, structural panel base plate with tamper resistant fasteners. Chemically resistant to most bodily fluids and salt and chlorine solution. Overall size: 30"w x 30"d x 18.5"h</p> <p>Norix Group: Hondo Nuevo Cube-Molded Plinth Base #HN815.HN850 or Equal</p>		20					0
C5	<p>TASK CHAIR FOR ALL OFFICES Mesh Onyx mid back adjustable lumbar, enhanced Synchro Black back frame and arms, Standard Cylinder Grade 3 vinyl TBD through submittals, fixed arm, black nylon base frame and caster color</p> <p>Sit On It Amplify OR Equal</p>		1					0
C6	<p>GUEST CHAIR CLOSED OFFICE Guest/ Side Chair, Flip/Nest Four-legged chair on cpt.casters w/ uph.seat, Mesh back flexes at the hip 14 degrees Fixed arms 300 lb capacity Frame finish: Black Greenguard Gold Certified Grade 3 Non Woven vinyl uph selections TBD through submittals. Overall: 23"w x 22.75"d x 34.62"h</p> <p>Sit On It Movi Nester #, 1061 FT4 AR1 SC1 VG2 CS5 MB MC21 FC1 AC, or Equal</p>		2					0

D1	<p>DESK W/60" RETURN Main worksurface is 70" x 30" with modesty panel, incorporating sit to stand base. Return is 24" x 60" with freestanding box/box file underneath worksurface. Desk shall have a keyboard tray, and each worksurface shall have one grommet. Wire management shall be provided under both worksurfaces. Tops and modesty panel are high pressure plastic laminate.</p> <p>RIGHT RETURN (photo shows left orientation)</p> <p>Haworth or Equal</p>		1					0
E1	<p>Model #4.8MF4-7D1 7 year warranty, 18 10/16" X 22 8/16" X 56 3/16"H MicroFridge Refrigerator, Auto/Freezer, Frost Free, 0 degree frost free freezer, 700 microwave watts output, 0.7 cu. ft. microwave capacity 2 full and 1 half-width wire shelves, 3 full-width door shelves, 2-liter bottle storage, transparent crisper, temperature control, white interior, estar rated, Freezer: 1 full-width wire shelf, 2 full width door shelves, 1 ice cube tray integrated door handle, cord management hinge clip system, reversible door hinge, ADA Compliant, Microwave: Internal smoke sensor, USB charging station with 4 amps max for the 2, express cook settings, LED display and clock, glass carousel, 5.0 ft. cord. Color: Classic Black</p>		144					0
M-1	<p>SHOWER CURTAIN FOR STALL 42" X 74" Shower Curtain with Matching Split Rings, Window and Snap-on Woven Liner, 5" header, 15" sheer window to allow light into enclosure, woven liner is machine washable, and is water repellent. Meets NFPA701, Color: White GSA# GSPA3</p> <p>Manufacturer: Valley Forge Fabrics, Inc.</p>		144					0
S1	<p>WARDROBE Wardrobe shall match height of desk overhead and include two file drawers, closed storage with two adjustable shelves, and full height wardrobe with chrome coat rod. Wardrobe case and door front shall be finished, back shall be unfinished. Adjustable shelves shall have a minimum adjustment range of 1-1/4". Drawers shall include two file hanging bars per file drawer. File drawers shall have full extension slides. Wardrobe drawer and door pulls shall be available in a linear style. Wardrobe shall have glides on bottom that allow for a 1" adjustment. All storage components shall be lockable and keyed alike. 69"H x 24"W x 24"D</p> <p>Haworth Masters Series X5AD-6924-SBSSLL - or Equal</p>		1					0

T1	<p> WRITING TABLE/TABLE DESK Writing Desk with Pencil Drawer Powder Coated steel frame with laminate top Steel color: Ebony, Laminate Finish: Wild Cherry (Wilsonart 7054-60) Overall: 35.6"w x 23.7"d x 29.6"h Norix Group: #TNT-6011 or equal GS-27F-0037X </p>  	288					0
T2	<p> BAR HEIGHT TABLE BASE AND TOP GSA Table shall have a 36" diameter laminate top with a bar height metal base. GSA Contract: GC-28F-0035Y Part # T-CFSH-36 Contractor: Hertz Furniture Systems LLC 201-529-2100 </p> 	4					0
							0

	Total Product				0
	Freight/Delivery/Handling, if not FOB destination (% of product total)				*
	State Sales Tax, if applicable				*
	Installation (% of product total)				*
	Design Fee (% of product total)				*
	Project Mgmt Fee (% of product total)				*
	TOTAL				0
	Storage - price for 30 day increment in case of unforeseen construction delays - See BVD Request for Pricing Cover Letter				

*

ADJUST FORMULAS AS REQUIRED

PROJECT NUMBER, NAME, LOCATION: 20-0069, Repair BEQ HP512, MCB Camp Lejeune, NC

BPA CONTRACT NAME AND NUMBER:

DEALER NAME:

REQUEST FOR PRICING

PART 2: Dealer Qualifications

	QUESTIONS	DEALER RESPONSE
1	How many years has the Dealership been in business?	
2	What is the dealer's closest office location and distance to project location?	
3	What will the typical turn-around time be for a service call once the project is complete?	
4	List the dealer personnel that will work on this project, their responsibilities, and years of experience.	
5	What extensive GSA experience does the dealership and their personnel posses? Give specific projects examples.	
6	List up to 5 projects of similar scope and complexity your dealer has completed, using the products for which you are basing this RFQ response, and include references for those projects. Provide contact names and e-mail addresses or phone numbers.	
7	How many installers on the project will be full-time employees of the Dealership?	
8	How many installers will be subcontracted labor to the Dealership and how will they be supervised?	
9	How many days do you anticipate to install this project?	
10	Provide a copy of the Dealership's business credit report within the last 60 days. Provide documentation that Dealership is qualified for bonding for full amount of the FF&E package.	
11	Dealer will guarantee pricing for length of time stated in the Request for Pricing Cover Letter	
12	If payment and performance bonds are required by the GC for this project, what are your company's rates/percentages for these bonds?	
13	Will any deposits be required prior to order placement? If so, for which products and what percentage will be required?	

****SWAP LINE ITEMS 10 AND 11 SO LIKE ITEMS ARE TOGETHER**

PROJECT NUMBER, NAME, LOCATION: 20-0069, Repair BEQ HP512, MCB Camp Lejeune, NC
BPA CONTRACT NAME AND NUMBER:
DEALER NAME:

REQUEST FOR PRICING

PART 3: Manufacturer Qualifications

	QUESTIONS	MFG RESPONSE
1	How many years has the Manufacturer (main bid product) been in business?	
2	How will you certify all product supplied under this RFQ is compliant with the Buy American Act/Trade Agreement Act?	
3	What types of warranties are offered?	
4	What is the delivery lead-time for this project?	
5	Provide a copy of the Manufacturer’s business credit report within the last 60 days. Provide documentation that Manufacturer is qualified for bonding for full amount of the FF&E package.	

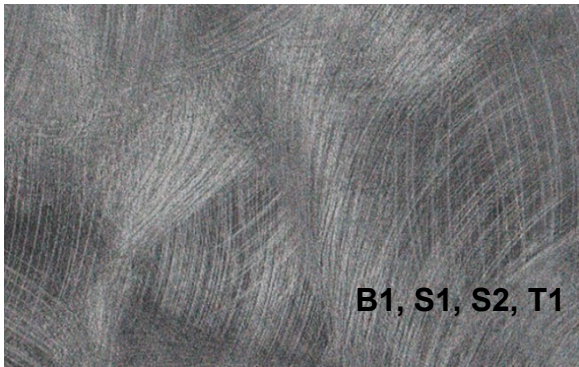
PROJECT: #20-0069
REPAIR BEQHP512
MARINE CORP BASE CAMP LEJEUNE, NORTH CAROLINA

CASEGOOD FINISHES



D1-DESK WITH 60" RETURN
S3- WARDROBE

Haworth or Equal
Laminate: Pionite
Absolute Acajou (WY160)



Norix Group or Equal
Laminate:
Pewter Brush (Wilsonart 4779-60)

BED, HEADBOARD, NIGHTSTAND,
UNDERBUNK STORAGE, TABLE DESK



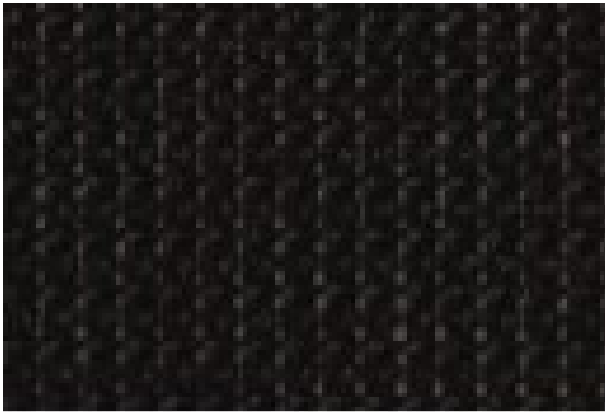
Norix Group or Equal
Steel Color:
Ebony

PROJECT: #20-0069
REPAIR BEQHP512
MARINE CORP BASE CAMP LEJEUNE, NORTH CAROLINA

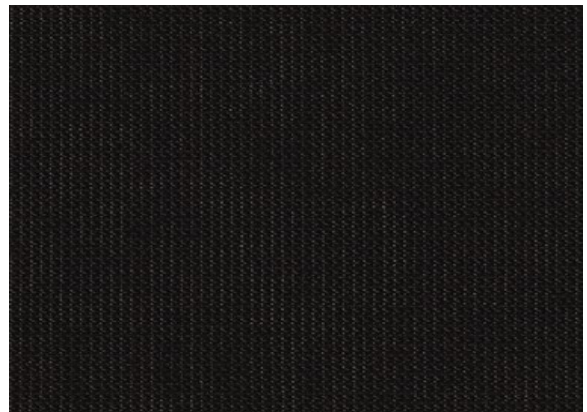
FABRIC FINISHES



MOMENTUM Pattern Endurance EPU, Noir
Grade 3 Vinyl



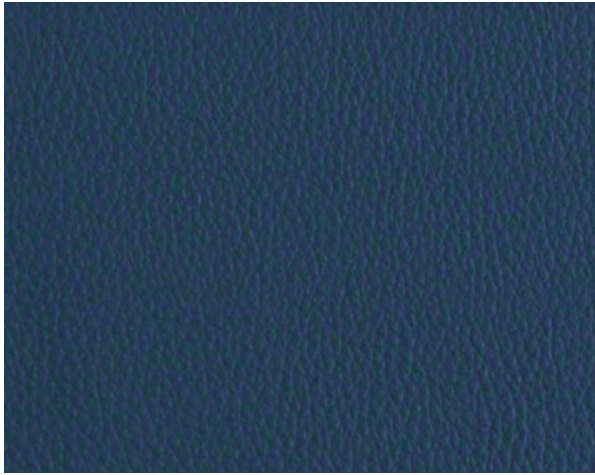
Sit on IT Pattern Movi Onyx MC20
Movi Chair Option Mesh



Sit on IT Pattern: Solid Mesh Onyx
Amplify Chair Option Mesh

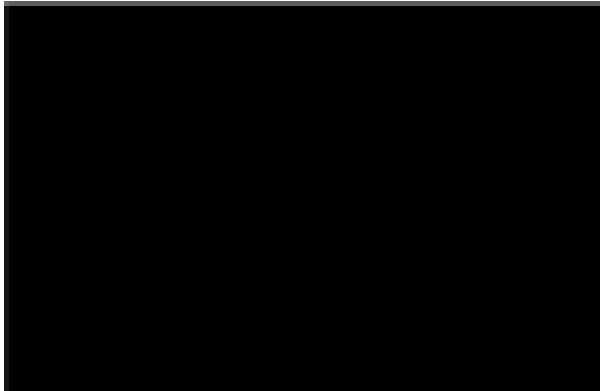
C1- DORMITORY DESK CHAIR- Movi Mesh back, vinyl seat
C5- OFFICE TASK CHAIR-Solid Mesh back, vinyl seat
C6- GUEST CHAIR -Movi Mesh back, vinyl seat

FABRIC FINISHES -Cont-



**Stinson Rialto RIA 14 Midnight
Warm and Cool Option
C3- LOUNGE CHAIR**

PLASTIC FINISHES

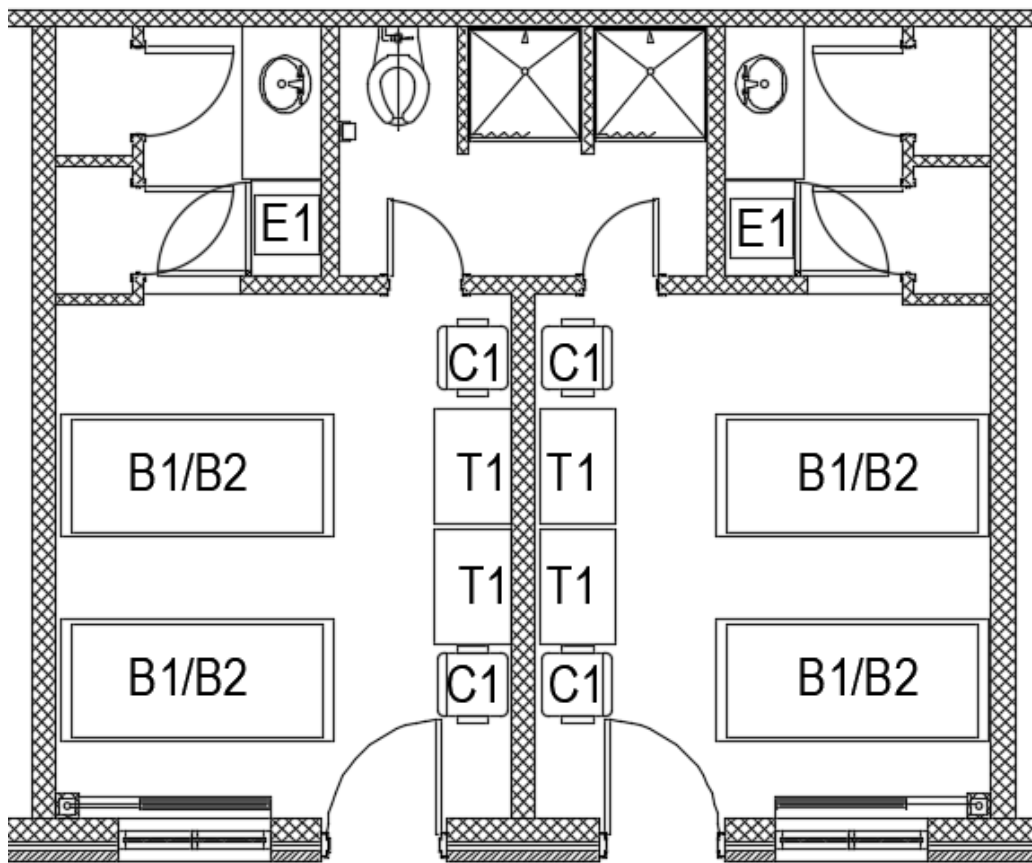


**Sit on IT Plastic Shell Color: SC1 Black
Warm AND Cool Option
C2- BAR STOOL SHELL COLOR**

MOLDED POLYMER



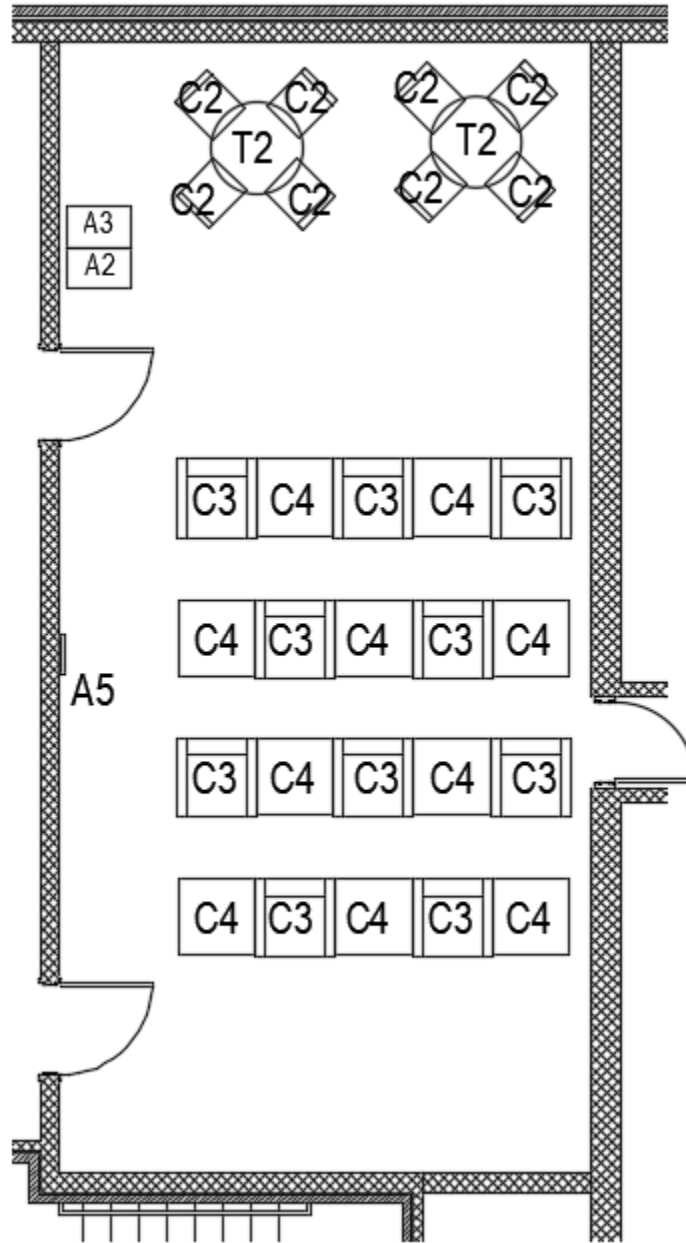
**NORIX Hondo Nuevo color:
Warm AND Cool Option
GRAPHITE
C4-OTTOMAN**



HP512 - BARRACK FURNITURE PLAN

1ST, 2ND, AND 3RD FLOOR

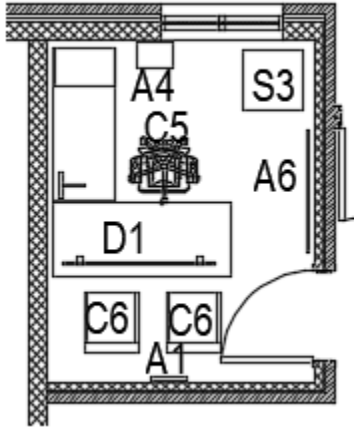
Scale: NTS



LOUNGE FURNITURE PLAN

2ND AND 3RD FLOOR

Scale: 3/16" = 1'-0"



OFFICE FURNITURE PLAN

FIRST FLOOR

Scale: 3/16" = 1'-0"