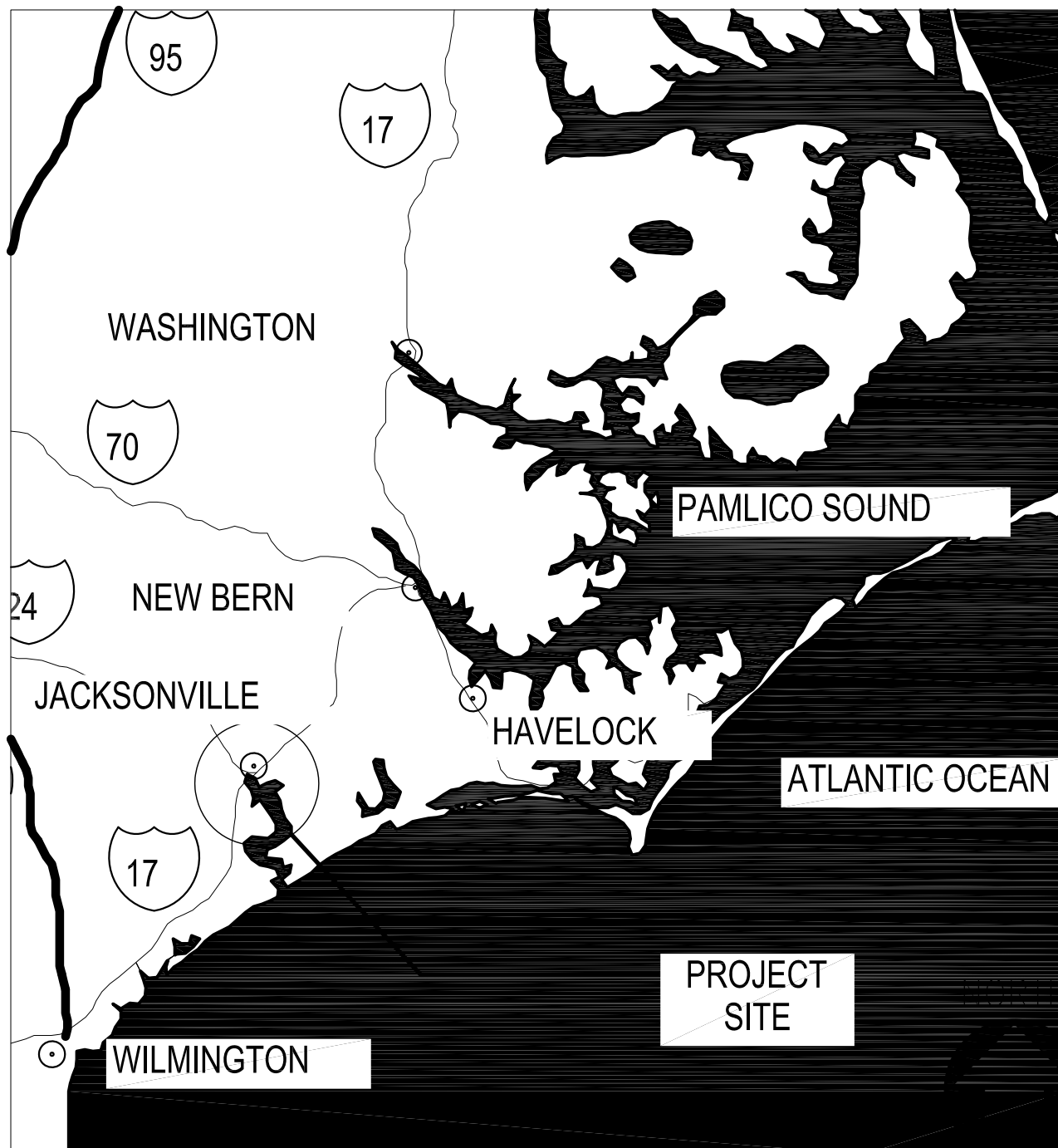


ORGANIZATIONAL SHOP

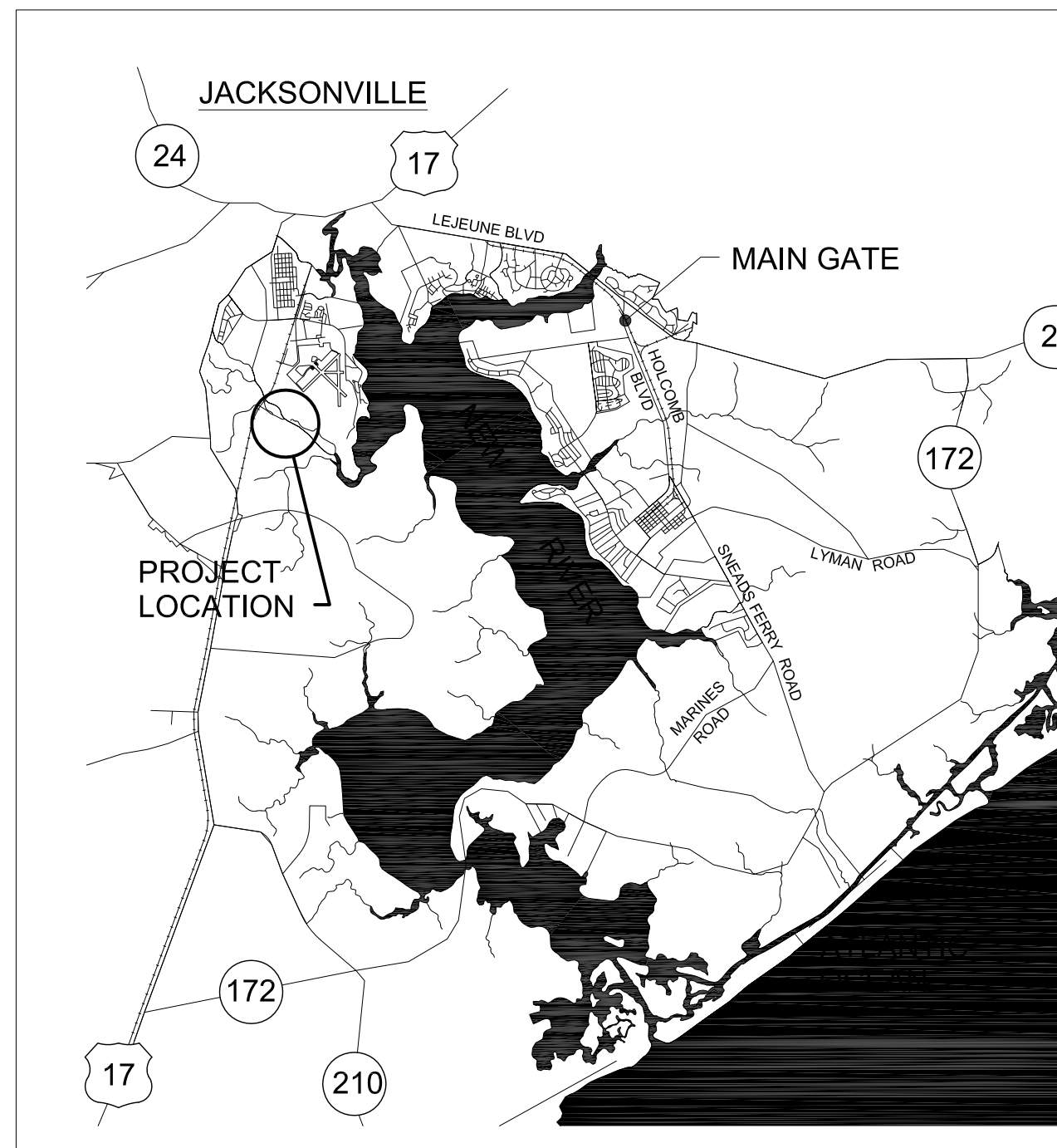
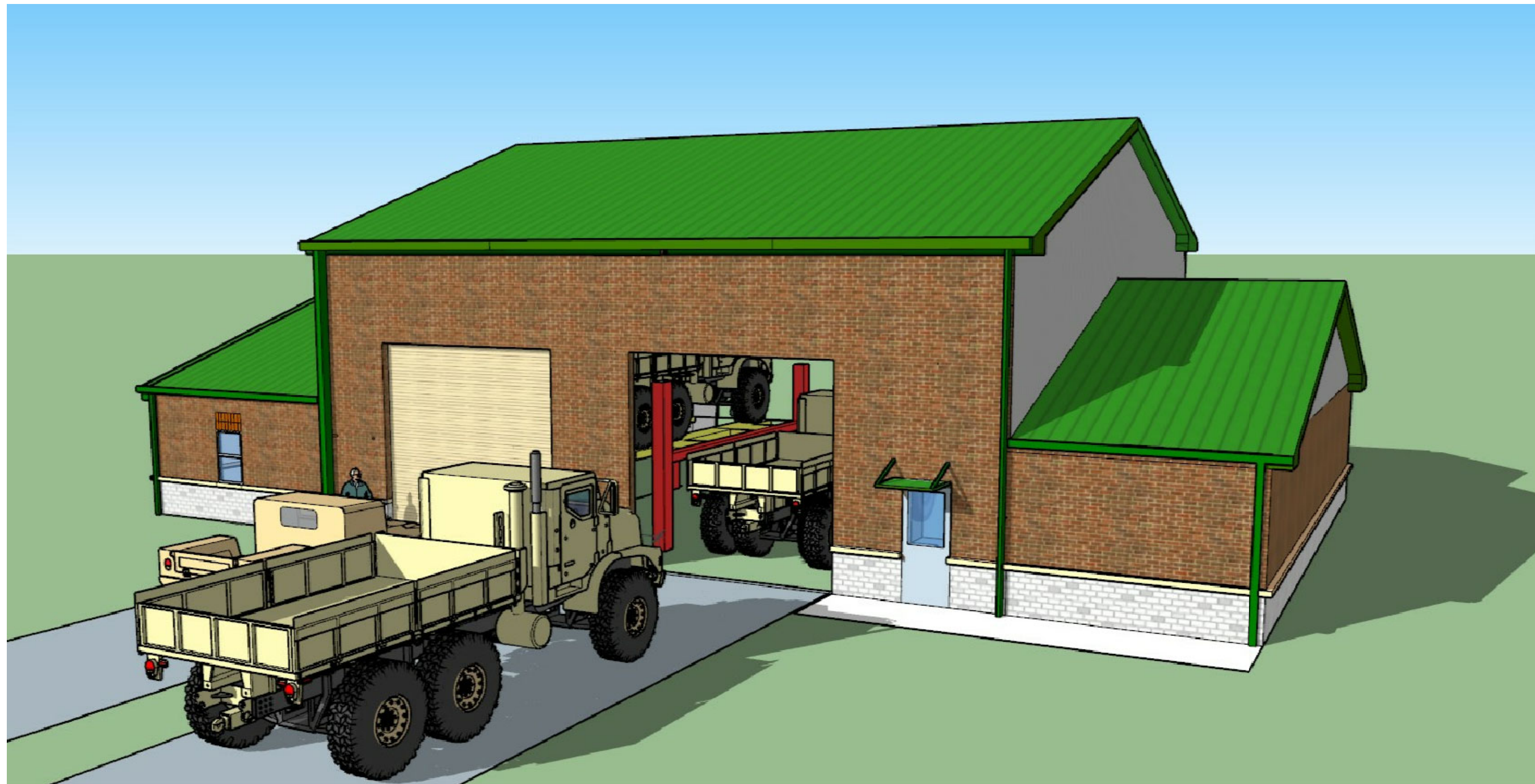
FINAL DESIGN SUBMISSION

MARINE CORPS AIR STATION NEW RIVER

07/12/21



VICINITY MAP

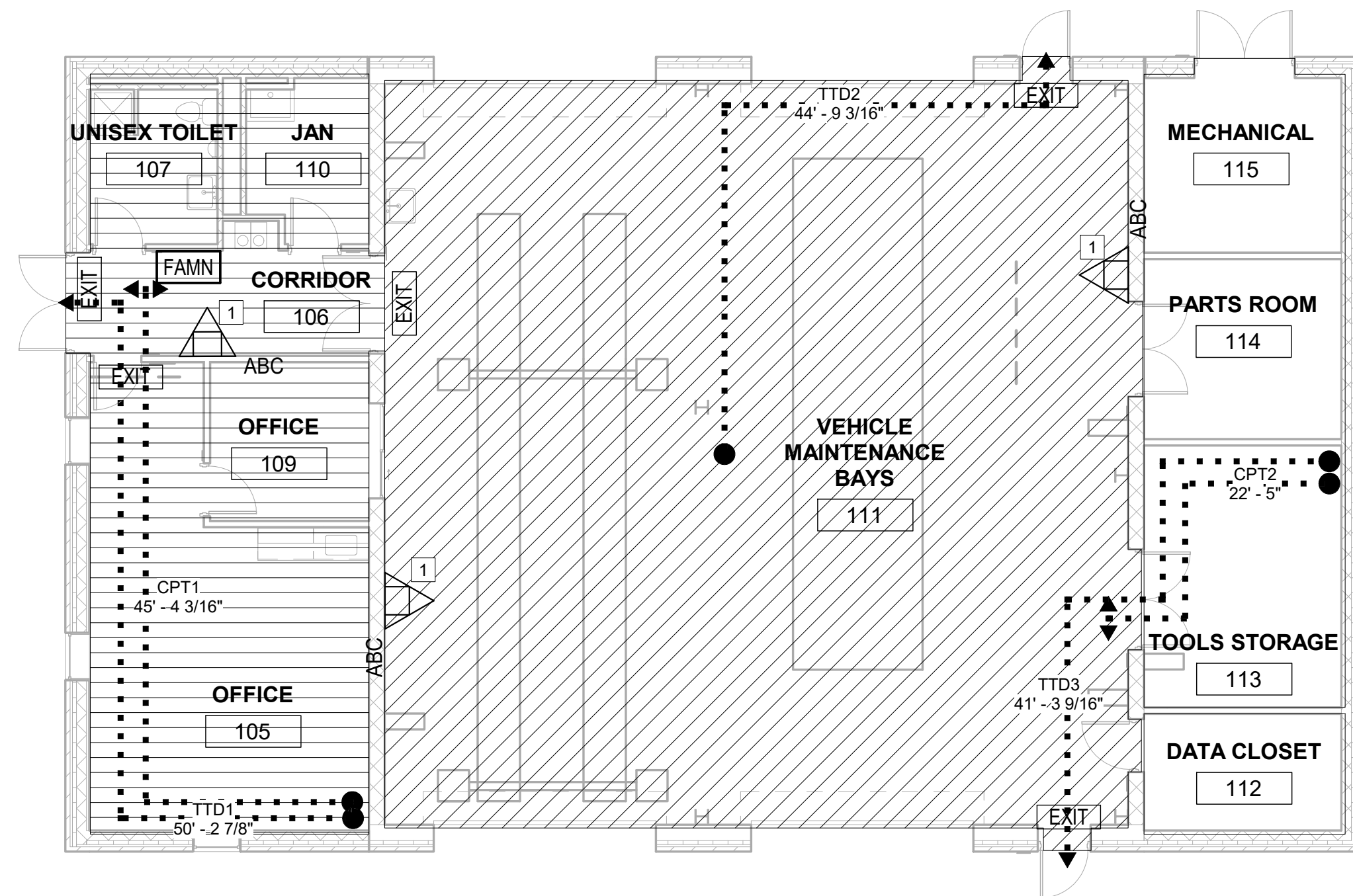


LOCATION MAP

NAVAL FACILITIES ENGINEERING SYSTEMS COMMAND MID-ATLANTIC

DESIGN AND CONSTRUCTION
FACILITIES ENGINEERING AND ACQUISITION DIVISION
NORFOLK, VIRGINIA

[illegible]



ROOM USE/OCCUPANCY

SPECIAL PURPOSE INDUSTRIAL [GROUP S-1]
(2230 SF)
4 PERSONS EXPECTED

BUSINESS [GROUP B]
(857 SF)
857 SF / 150 SF = 6 PERSONS

STORAGE / MECH. [GROUP S-1]
(512 SF)
512 SF / 500 SF = 1 PERSON

DATA CLOSET [GROUP S-1]
(96 SF)
96 SF / 300 SF = 1 PERSONS

TOTAL PERSONS = 12 PERSONS



FIRST FLOOR PLAN - LIFE SAFETY

$$1/8'' = 1'-0''$$

EXIT CAPACITY				
MEANS OF EGRESS	DOOR WIDTH (IN)	WIDTH FACTOR	DOOR CAPACITY	CAPACITY USED
WEST DOUBLE DOOR	72	0.2	360	6
NORTH GARAGE DOOR	36	0.2	180	2
SOUTH GARAGE DOOR	36	0.2	180	4
MECHANICAL ROOM DOOR	72	0.2	360	0
TOTAL			1,080	12

TRAVEL DISTANCE SUMMARY		
TD ID	ACTUAL DISTANCE	MAXIMUM DISTANCE
TTD1	50' 3"	200'
TTD2	44' 10"	300'
TTD3	41' 4"	200'
CPT1	45' 5"	75'
CPT2	22' 5"	50'

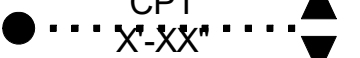




GENERAL NOTES

1. FOR BUILDING CODE ANALYSIS, REFER TO GI001
2. FOR CODE COMPLIANCE SITE PLAN, REFER TO GI102

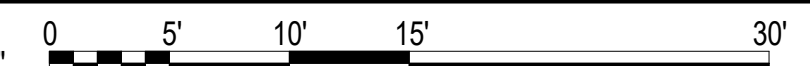
KEYNOTES

1. FIRE EXTINGUISHERS INCLUDED IN FF&E PACKAGE.
BRACKETS AND CABINETS PART OF CONSTRUCTION
CONTRACT

LIFE SAFETY LEGEND

SYMBOL	DESCRIPTION
	COMMON PATH OF TRAVEL
	MAXIMUM TRAVEL DISTANCE
	EXIT SIGN
	DRY CHEMICAL FIRE EXTINGUISHER CLASS ABC
	FIRE ALARM AND MASS NOTIFICATION CONTROL PANEL

GRAPHIC SCALE(S)

$$1/8'' = 1' - 0''$$
[illegible][illegible]

FOR COMMANDER NAVFAC					
ACTIVITY					
Approved by LtCol Roger Holliday, Director I&E, MCAS New River					
SATISFACTORY TO DATE				6/14/21	
DES	MDS	DRW	LEJ	CHK	MFU
PM/DM			GFS / LEJ		
BRANCH MANAGER				DSN	
CHIEF ENG/ACHR				EJA	
FIRE PROTECTION				DSN	

DEPARTMENT OF THE NAVY	NAVAL FACILITIES ENGINEERING SYSTEMS COMMAND
MIDLAND DC CORE	NAVAL FACILITIES ENGINEERING SYSTEM COMMAND
MACAS NEW RIVER	NAVAL STATION - NORFOLK, VA
	JACKSONVILLE, NORTH CAROLINA
P-685 MACS-2 AUTOMOTIVE ORGANIZATIONAL SHOP	
	LIFE SAFETY FLOOR PLAN

SCALE: AS NOTED		
EPROJECT NO.:		1672404
CONSTR. CONTR. NO.		
NAVFAC DRAWING NO.		
		12842231
SHEET	4	OF 117
GI101		

