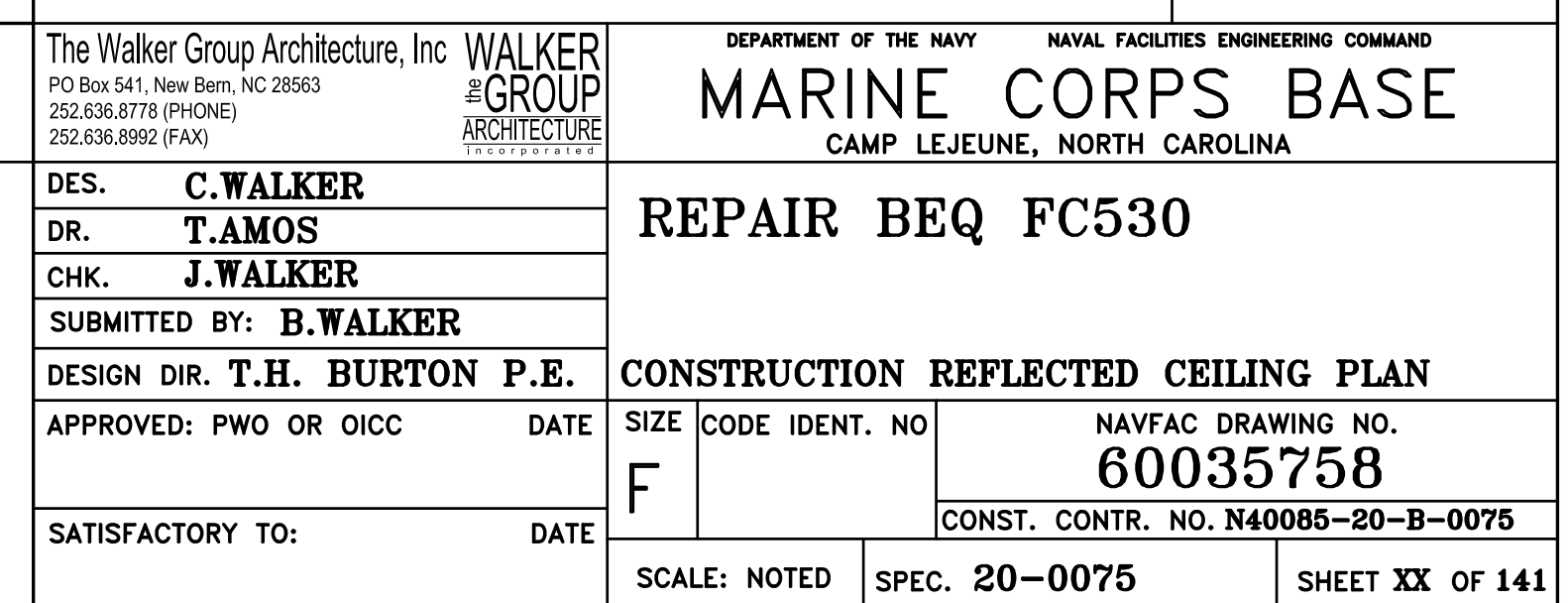


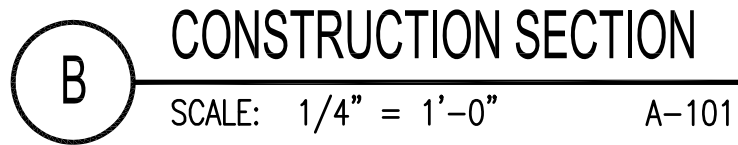
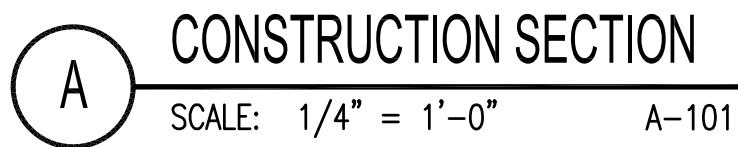
## GENERAL NOTES

1. CONTRACTOR TO FIELD VERIFY ALL EXISTING DIMENSIONS BEFORE COMMENCING WORK.
2. SEE CIVIL, STRUCTURAL, PLUMBING, MECHANICAL, AND ELECTRICAL DRAWINGS FOR ADDITIONAL NOTES.
3. SEE FINISH SCHEDULE FOR FLOOR, WALL, AND DOOR FINISHES.
4. SEE SCHEDULES FOR DOOR AND WINDOW NOTES AND DETAILS.
5. PAINT INTERIOR CMU WALLS AND CONCRETE CEILINGS WHERE EXPOSED. SEE SPECIFICATIONS, DIVISION 099000 PAINTS AND COATINGS, 3.2 SURFACE PREPARATION.
6. PROTECT EXISTING ITEMS TO REMAIN.
7. PROVIDE ROLLER SHADES AT ALL WINDOWS. SEE SPECIFICATIONS.

**DISCLOSURE OF INFORMATION**  
**CONTRACTOR SHALL COMPLY AS FOLLOWS:**  
 (A) THE CONTRACTOR SHALL NOT RELEASE TO ANYONE OUTSIDE THE CONTRACTOR'S ORGANIZATION ANY UNCLASSIFIED INFORMATION, REGARDLESS OF MEDIUM (E.G., FILE, TAPE, DOCUMENT), PERTAINING TO ANY PART OF THIS CONTRACT OR ANY PROGRAM RELATED TO THIS CONTRACT, UNLESS:  
 (1) THE CONTRACTING OFFICER HAS GIVEN PRIOR WRITTEN APPROVAL; OR  
 (2) THE INFORMATION IS OTHERWISE IN THE PUBLIC DOMAIN BEFORE THE DATE OF RELEASE  
 (B) REQUESTS FOR INFORMATION FROM ANY MEDIUM SHALL BE REFERRED TO THE MEDIUM TO BE USED, AND THE PURPOSE OF THE REQUEST. FOR THE RELEASE, THE CONTRACTOR SHALL SUBMIT ITS REQUEST TO THE CONTRACTING OFFICER AT LEAST 45 DAYS BEFORE THE PROPOSED DATE FOR RELEASE.  
 (C) THE CONTRACTOR AGREES TO INCLUDE A SIMILAR REQUIREMENT IN EACH SUBCONTRACT UNDER HIS CONTRACT. SUBCONTRACTORS SHALL SUBMIT REQUESTS FOR AUTHORIZATION TO RELEASE THROUGH THE PRIME CONTRACTOR TO THE CONTRACTING OFFICER.







CONSTRUCTION NOTES	
MARK	DESCRIPTION
①	PROVIDE GUARD RAIL TO MATCH EXISTING WHERE PRECAST GUARD WAS REMOVED. SEE ENLARGED PLAN. SEE STRUCTURAL. TYPICAL FOR (16) LOCATIONS ON 2ND AND 3RD LEVELS.
②	EXISTING STAIR AND BALCONY RAILING TO REMAIN, PROTECT.
③	ACOUSTICAL CEILING GRID, TILES, AND HANGERS, SEE A-102.
④	PLUMBING FIXTURES AND ACCESSORIES, SEE ENLARGED FLOOR PLANS AND PLUMBING PLANS.
⑤	HOLLOW METAL FRAMES, DOORS, AND HARDWARE. SEE A-101 AND DOOR SCHEDULE.
⑥	BASE CABINET, SEE INTERIOR ELEVATIONS.
⑦	PAINT CONCRETE CEILING.
⑧	NEW GYPSUM BOARD CEILING AND SUPPORT SYSTEM. FINISH AND PAINT. PROVIDE 3-5/8" METAL STUDS AND 5/8" GYPSUM BOARD BULKHEAD AT EXPOSED CEILING TERMINATION.
⑨	EXISTING PRECAST CONCRETE ROOF PARAPET WALL TO REMAIN, PROTECT.
⑩	NEW ROOF HATCH.
⑪	STANDING SEAM METAL ROOF OVER VAPOR BARRIER AND EXISTING SHEATHING.
⑫	PROVIDE METAL GUTTERS AND DOWNSPOUTS AND 6X6 GALVANIZED TUBE STEEL COLUMNS. SEE CIVIL FOR UNDERGROUND STORM SEWER CONNECTION.
⑬	EXISTING STEEL ROOF ACCESS LADDER TO REMAIN.
⑭	ALUMINUM GABLE VENT LOUVER SEE ELEVATIONS.
⑮	EXISTING DRAFT STOP WALLS TO REMAIN. ENSURE WALLS ARE SEALED WITH NO OPENINGS.
⑯	EXISTING ROOF TRUSSES TO REMAIN, PROTECT.
⑰	PROVIDE ROOF EXPANSION JOINT. SEE DETAIL E/A-502.
⑱	PROVIDE ALUMINUM NOSING ON EXISTING CONCRETE INTERIOR AND EXTERIOR STAIRS. SEE DETAIL D/A-503.
⑲	PROVIDE NEW 4" CMU WALL TO 8'-0" HEIGHT. NEW BLOCK TO BE TOOTHED IN OVER DOOR.

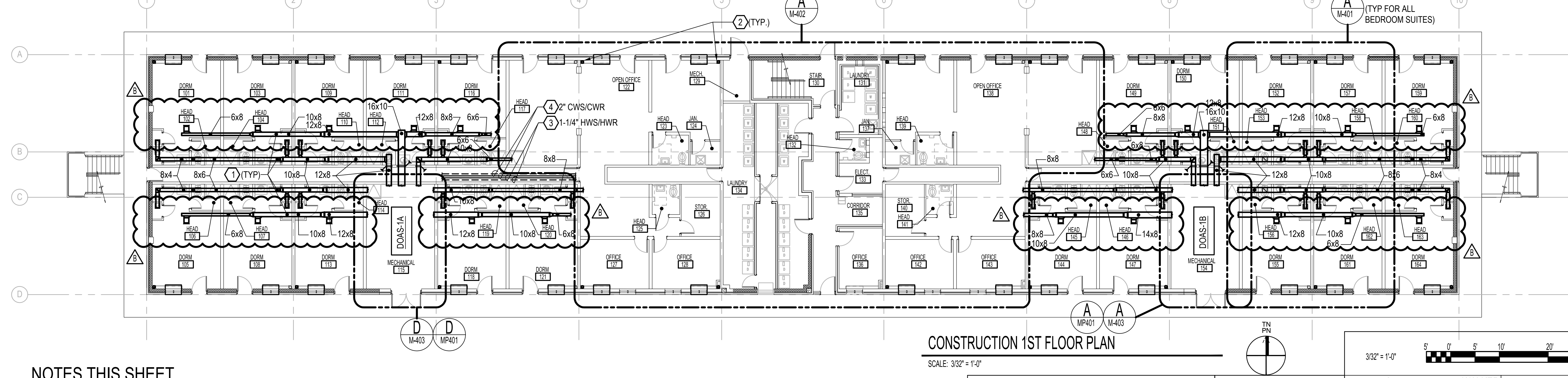
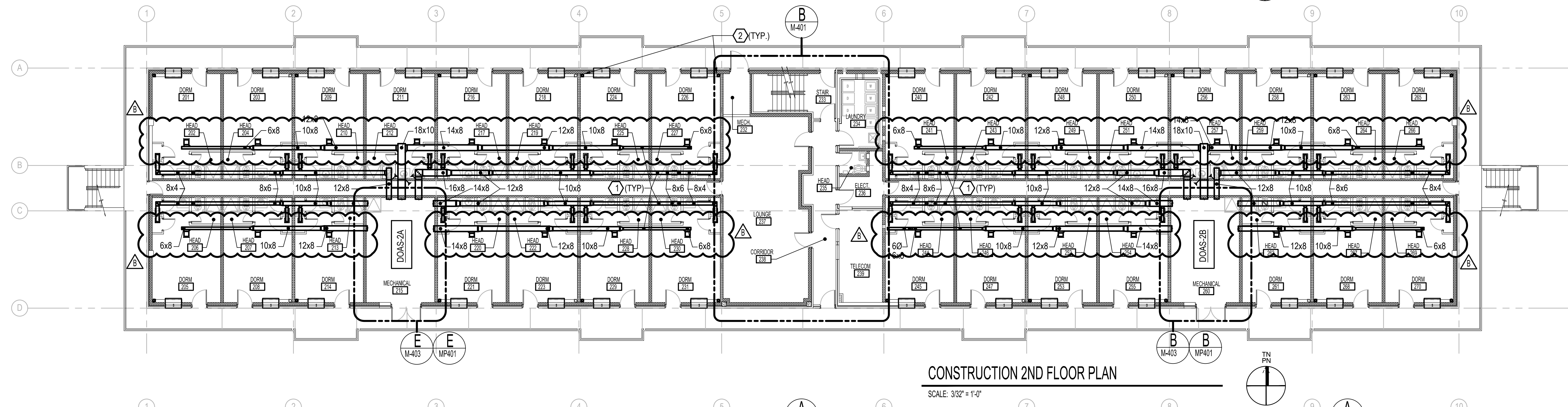
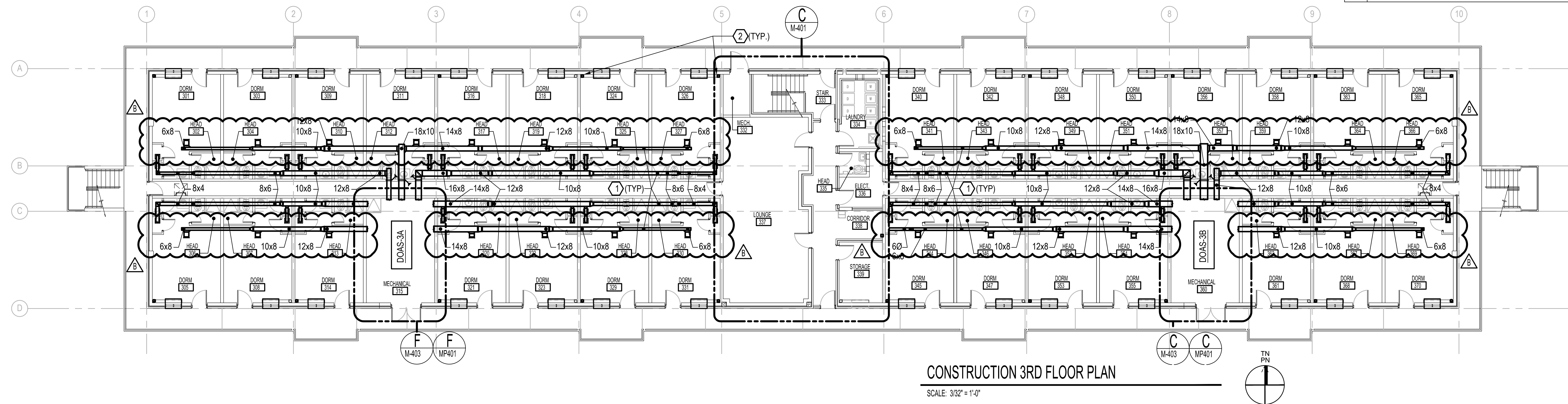
1/4" = 1'-0"  A-301

The Walker Group Architecture, Inc. <b>WALKER</b> @ GROUP PO Box 541, New Bern, NC 28563 252.636.8778 (PHONE) 252.636.8800 (FAX) ARCHITECTURE CONSULTANTS		DEPARTMENT OF THE NAVY NAVAL FACILITIES ENGINEERING COMMAND <b>MARINE CORPS BASE</b> CAMP LEJEUNE, NORTH CAROLINA	
DES. <b>C. WALKER</b> DR. <b>T. AMOS</b> CHK. <b>J. WALKER</b> SUBMITTED BY: <b>B. WALKER</b>		<b>REPAIR BEQ FC530</b>	
DESIGN DIR. <b>T.H. BURTON P.E.</b>		<b>CONSTRUCTION SECTIONS</b>	
APPROVED: PWO OR OICC	DATE	SIZE <b>F</b>	NAVFAC DRAWING NO. <b>60035761</b> CONST. CONTR. NO. <b>N40085-20-B-0075</b>
SATISFACTORY TO:	DATE	SCALE: NOTED	SPEC. <b>20-075</b>
		SHEET <b>36</b> OF <b>141</b>	





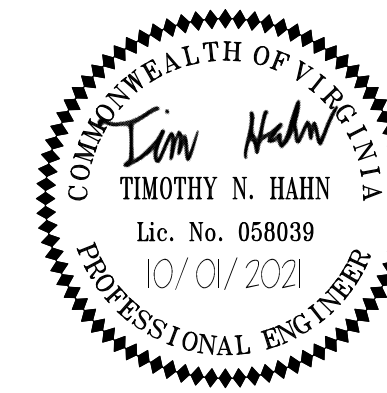
SYM	REVISIONS	DATE	APPROVED
A	AMENDMENT 010	08.04.22	



#### NOTES THIS SHEET

- 1) PROVIDE DUCTWORK, INSULATION, HANGERS, AND SUPPORTS COMPLETE.
- 2) 1-1/4" CONDENSATE RISER FOR ALL FLOORS. CONNECT TO STORM PIPING BELOW FIRST FLOOR SLAB. REFER TO ARCHITECTURAL AND CIVIL DOCUMENTS FOR ADDITIONAL INFORMATION.
- 3) PROVIDE HOT WATER SUPPLY AND RETURN PIPING, INSULATION, HANGERS, AND SUPPORTS COMPLETE.
- 4) PROVIDE CHILLED WATER SUPPLY AND RETURN PIPING, INSULATION, HANGERS, AND SUPPORTS COMPLETE.

DISCLOSURE OF INFORMATION  
CONTRACTOR SHALL COMPLY AS FOLLOWS:  
(A) THE CONTRACTOR SHALL NOT RELEASE TO ANYONE OUTSIDE THE CONTRACTOR'S ORGANIZATION ANY UNCLASSIFIED INFORMATION, REGARDLESS OF MEDIUM (E.G., FILM, TAPE, DOCUMENT), PERTAINING TO ANY PART OF THIS CONTRACT OR ANY PROGRAM RELATED TO THIS CONTRACT, UNLESS:  
(1) THE CONTRACTING OFFICER HAS GIVEN PRIOR WRITTEN APPROVAL; OR  
(2) THE INFORMATION IS OTHERWISE IN THE PUBLIC DOMAIN BEFORE THE DATE OF RELEASE.  
(B) REQUESTS FOR APPROVAL SHALL IDENTIFY THE SPECIFIC INFORMATION TO BE RELEASED, THE MEDIUM TO BE USED, AND THE PURPOSE FOR THE RELEASE. THE CONTRACTOR SHALL SUBMIT ITS REQUEST TO THE CONTRACTING OFFICER AT LEAST 45 DAYS BEFORE THE PROPOSED DATE FOR RELEASE.  
(C) THE CONTRACTOR AGREES TO INCLUDE A SIMILAR REQUIREMENT IN EACH SUBCONTRACT UNDER HIS CONTRACT. SUBCONTRACTORS SHALL SUBMIT REQUESTS FOR AUTHORIZATION TO RELEASE THROUGH THE PRIME CONTRACTOR TO THE CONTRACTING OFFICER.



The Walker Group Architecture, Inc.  
PO Box 541, New Bern, NC 28563  
252.636.8778 (PHONE)  
252.636.8992 (FAX)

DES. T. HAHN  
DR. C. LAMBERT  
CHK. J. KULENGUSKI  
SUBMITTED BY: B. WALKER

DESIGN DIR. T.H. BURTON P.E.

APPROVED: PWO OR OICC DATE

SATISFACTORY TO: DATE

DEPARTMENT OF THE NAVY  
NAVAL FACILITIES ENGINEERING COMMAND  
MARINE CORPS BASE  
CAMP LEJEUNE, NORTH CAROLINA

REPAIR BEQ FC530

MECHANICAL CONSTRUCTION FLOOR PLANS

SIZE CODE IDENT. NO

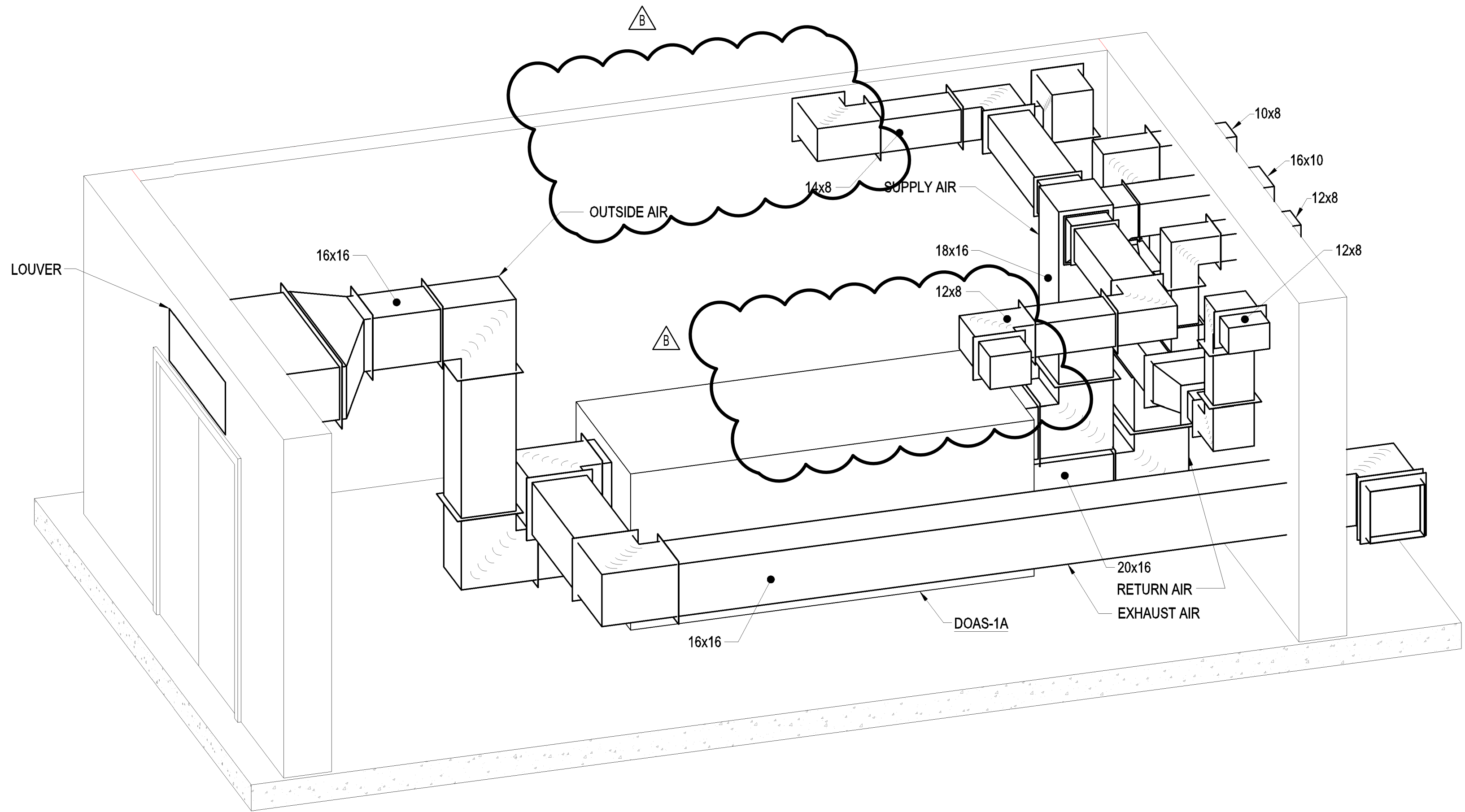
NAVFAC DRAWING NO.  
60035807

CONST. CONTR. NO. N40085-20-B-0075

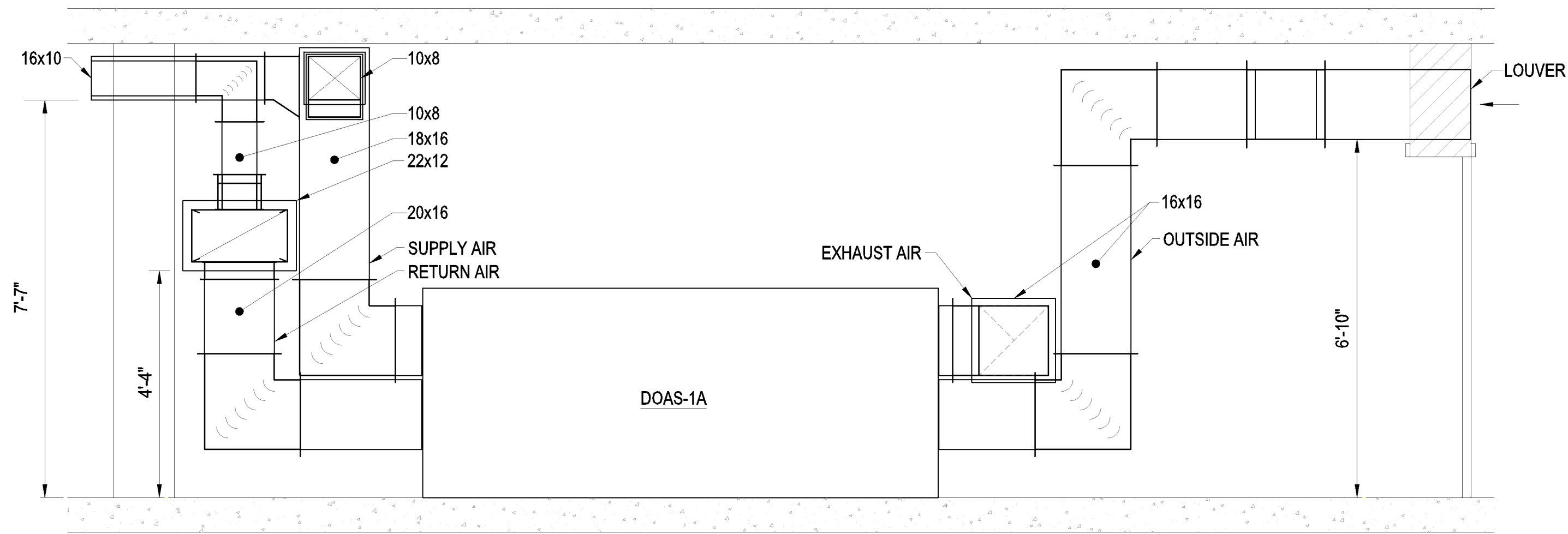
SHEET 82 OF 141



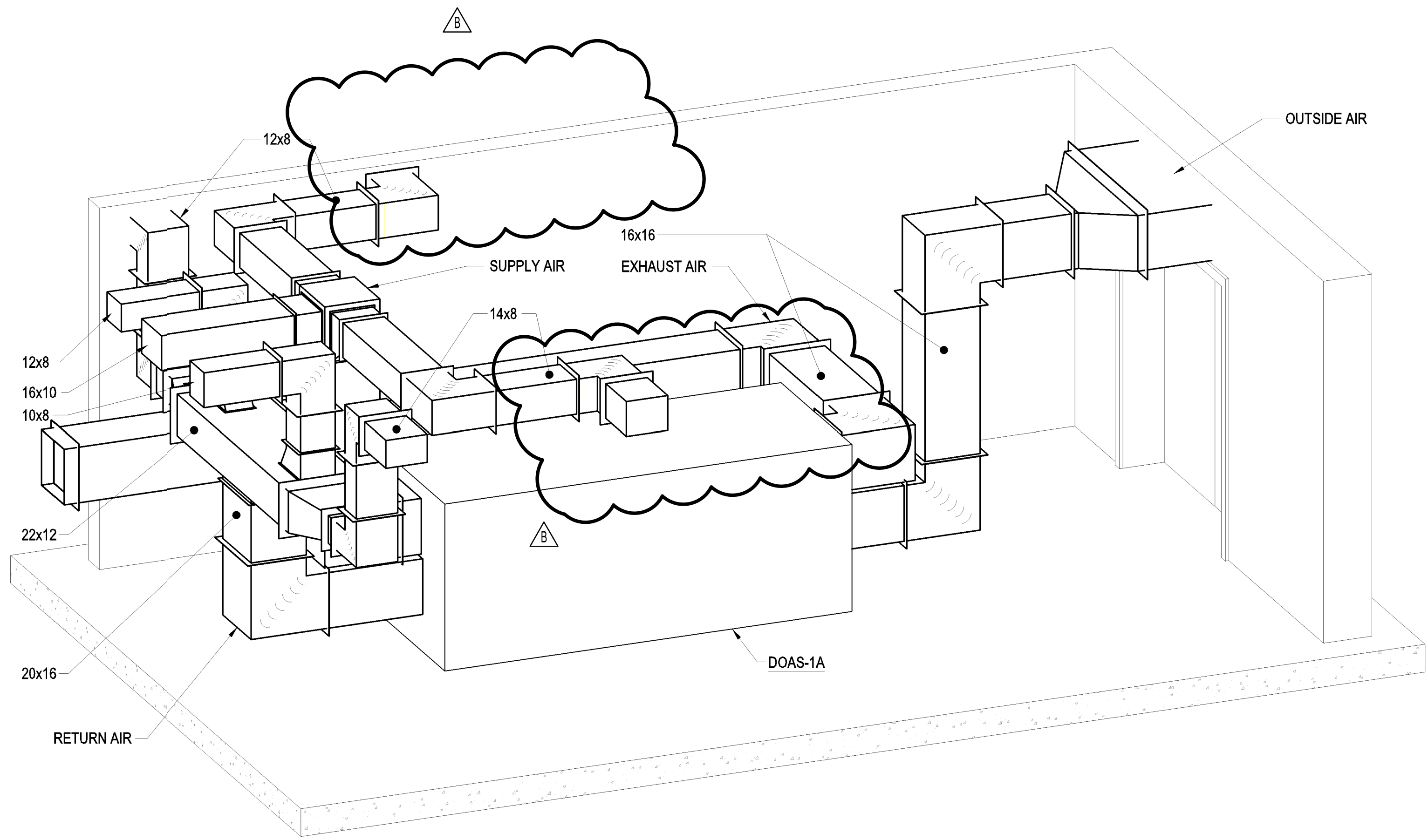
SYM	REVISIONS	DATE	APPROVED
ΔB	AMENDMENT 010	08.04.22	



**A** TYPICAL MECHANICAL ROOM PERSPECTIVE VIEW "A"  
SCALE: NO SCALE M-403



**1** TYPICAL MECHANICAL ROOM SECTION  
SCALE: 1/2" = 1'-0" M-403



**B** TYPICAL MECHANICAL ROOM PERSPECTIVE VIEW "B"  
SCALE: NO SCALE M-403

1/2" = 1'-0"

3'0"

5'

M-301

The Walker Group Architecture, Inc. WALKER GROUP ARCHITECTURE  
P.O. Box 541, New Bern, NC 28563  
252.636.8778 (PHONE)  
252.636.8992 (FAX)

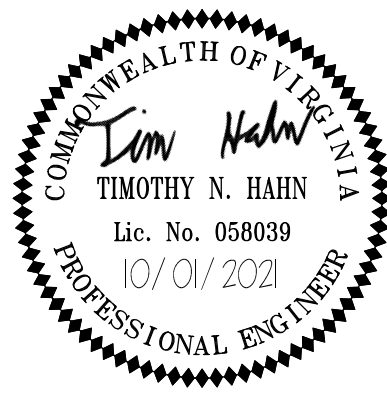
DEPARTMENT OF THE NAVY  
NAVAL FACILITIES ENGINEERING COMMAND  
MARINE CORPS BASE  
CAMP LEJEUNE, NORTH CAROLINA

DES. T. HAHN  
DR. C. LAMBERT  
CHK. J. KULENGUSKI  
SUBMITTED BY: B. WALKER  
DESIGN DIR. T.H. BURTON P.E.  
APPROVED: PWO OR OICC  
SATISFACTORY TO:

REPAIR BEQ FC530  
MECHANICAL ROOM ISOMETRIC VIEWS AND SECTION  
SIZE CODE IDENT. NO  
F  
NAVFAC DRAWING NO.  
60035809  
CONST. CONTR. NO. N40085-20-B-0075

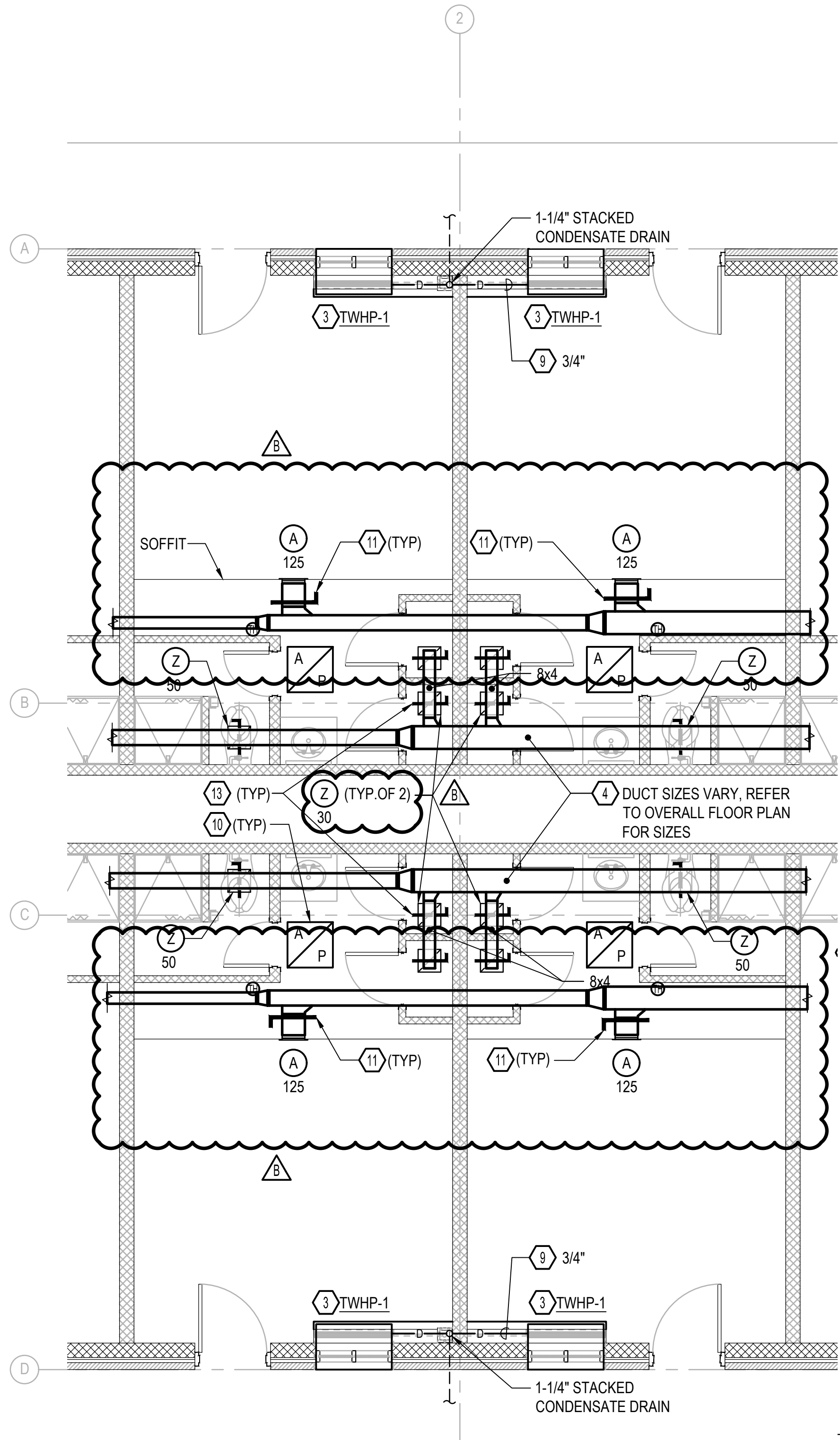
SCALE: NOTED SPEC. 20-0075 SHEET 84 OF 141

DISCLOSURE OF INFORMATION  
CONTRACTOR SHALL COMPLY AS FOLLOWS:  
(A) THE CONTRACTOR SHALL NOT RELEASE TO ANYONE OUTSIDE THE CONTRACTOR'S ORGANIZATION ANY UNCLASSIFIED INFORMATION, REGARDLESS OF MEDIUM (E.G., FILM, TAPE, DOCUMENT), PERTAINING TO ANY PART OF THIS CONTRACT OR ANY PROGRAM RELATED TO THIS CONTRACT, UNLESS:  
(1) THE CONTRACTING OFFICER HAS GIVEN PRIOR WRITTEN APPROVAL; OR  
(2) THE INFORMATION IS OTHERWISE IN THE PUBLIC DOMAIN BEFORE THE DATE OF RELEASE.  
(B) REQUESTS FOR APPROVAL SHALL IDENTIFY THE SPECIFIC INFORMATION TO BE RELEASED, THE MEDIUM TO BE USED, AND THE PURPOSE FOR THE RELEASE. THE CONTRACTOR SHALL SUBMIT ITS REQUEST TO THE CONTRACTING OFFICER AT LEAST 45 DAYS BEFORE THE PROPOSED DATE FOR RELEASE.  
(C) THE CONTRACTOR AGREES TO INCLUDE A SIMILAR REQUIREMENT IN EACH SUBCONTRACT UNDER HIS CONTRACT. SUBCONTRACTORS SHALL SUBMIT REQUESTS FOR AUTHORIZATION TO RELEASE THROUGH THE PRIME CONTRACTOR TO THE CONTRACTING OFFICER.

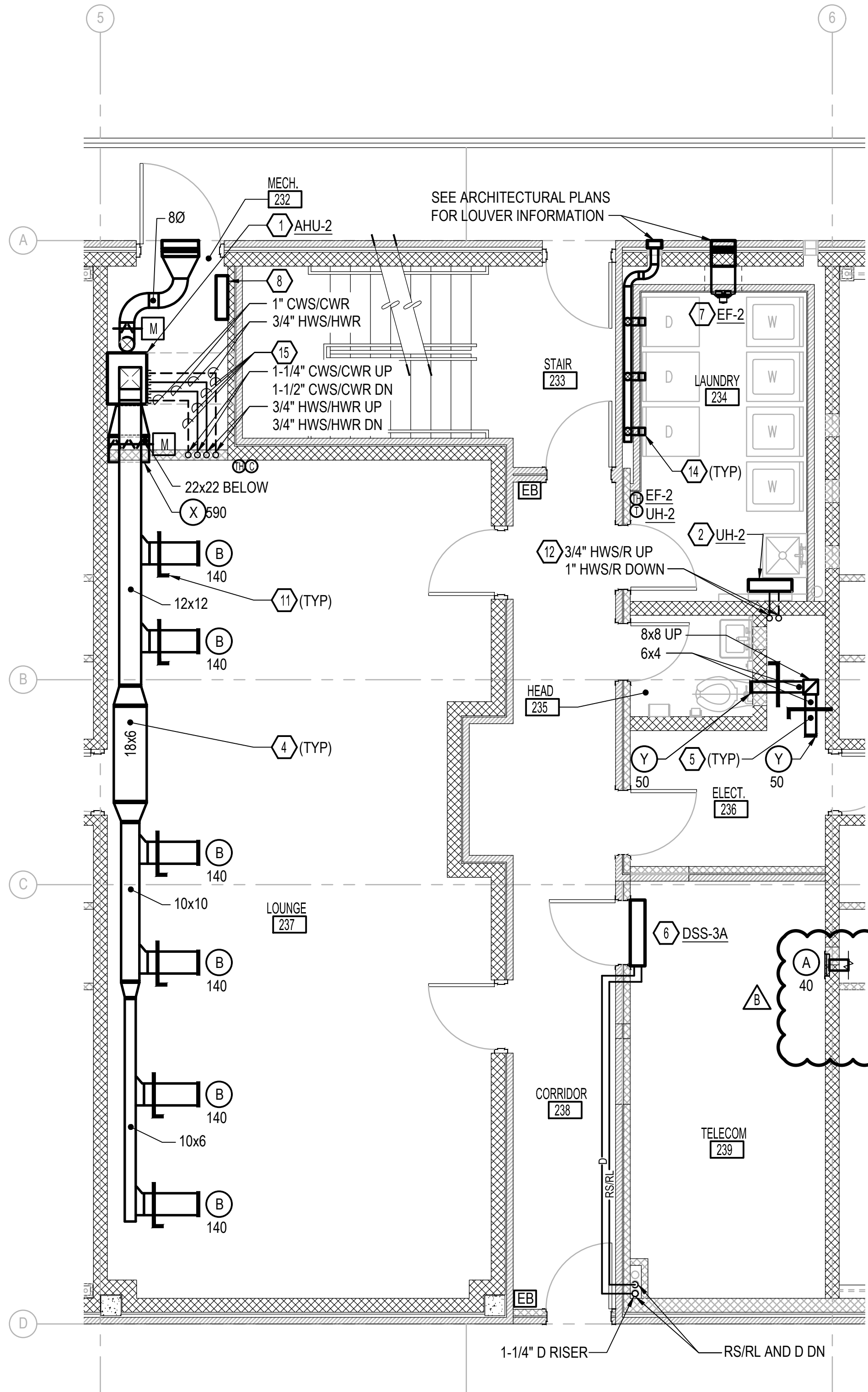




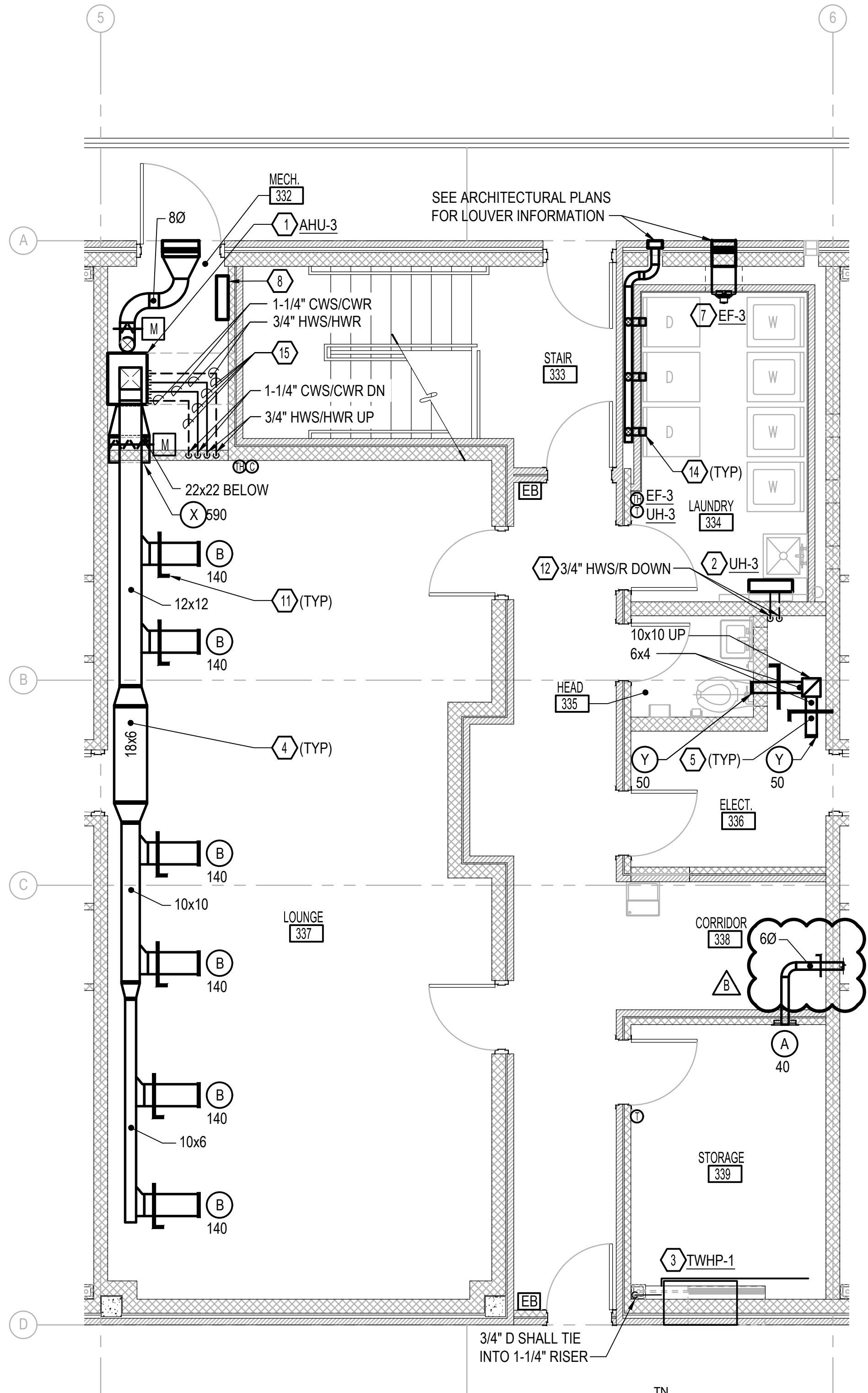
SYM	REVISIONS	DATE	APPROVED
A	AMENDMENT 010	08.04.22	



**A** TYPICAL ENLARGED CONSTRUCTION BEDROOMS FLOOR PLAN  
SCALE: 1/4" = 1'-0"  
M-101



**B** CONSTRUCTION ENLARGED FLOOR PLAN  
SCALE: 1/4" = 1'-0"  
M-101

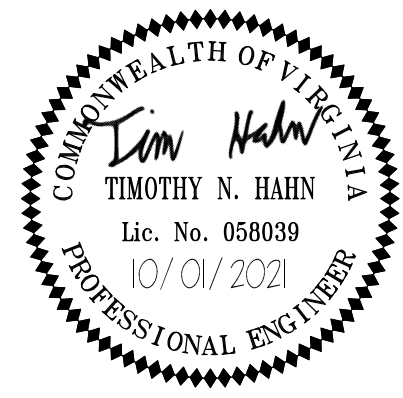


**C** CONSTRUCTION ENLARGED FLOOR PLAN  
SCALE: 1/4" = 1'-0"  
M-101

### NOTES THIS SHEET

- PROVIDE AIR HANDLER AND CONCRETE PAD COMPLETE. ROUTE 1" CONDENSATE PIPING TO FLOOR DRAIN IN MECHANICAL ROOM. PROVIDE FLEXIBLE DUCT CONNECTORS AT DUCT CONNECTIONS TO THE EQUIPMENT.
- PROVIDE UNIT HEATER, HANGERS, AND SUPPORTS COMPLETE.
- PROVIDE THROUGH WALL HEAT PUMP AND ASSOCIATED APPURTENANCES COMPLETE.
- PROVIDE DUCTWORK, INSULATION, HANGERS, AND SUPPORTS COMPLETE.
- PROVIDE EXHAUST DUCTWORK, HANGERS, AND SUPPORTS COMPLETE.
- PROVIDE DUCTLESS SPLIT SYSTEM INDOOR UNIT, REFRIGERANT PIPING, CONDENSATE PIPING, INSULATION, JACKETING, HANGERS, AND SUPPORTS COMPLETE.
- PROVIDE EXHAUST FAN, HANGERS, AND SUPPORTS COMPLETE IN EXISTING PENETRATION. ENLARGE AND PATCH PENETRATION AND MAKE WEATHER TIGHT.
- PROVIDE DDC PANEL COMPLETE.
- PROVIDE CONDENSATE PIPING, INSULATION, AND JACKETING COMPLETE WITHIN LIGATURE RESISTANT COVER TO CONDENSATE RISER IN CHASE.
- PROVIDE 24x24 ACCESS PANEL. REFER TO ARCHITECTURAL DOCUMENTS FOR ADDITIONAL REQUIREMENTS.
- PROVIDE REMOTE CABLE ACTUATED DAMPER COMPLETE. LOCATE CABLE TERMINATION ABOVE ACCESS PANEL OR ACCESSIBLE CEILING TILE.
- PROVIDE HOT WATER SUPPLY AND RETURN PIPING, INSULATION, HANGERS, AND SUPPORTS COMPLETE.
- PROVIDE VOLUME DAMPER IN VERTICAL SECTION OF DUCT.
- PROVIDE 4" DUCTWORK, HANGERS, AND SUPPORTS COMPLETE FROM LINT TRAP BOX TO DRYER. SEE DETAIL.
- PROVIDE HYDRONIC PIPING, INSULATION, HANGERS, AND SUPPORTS COMPLETE. PROVIDE JACKETING WHERE REQUIRED PER SPECIFICATIONS.

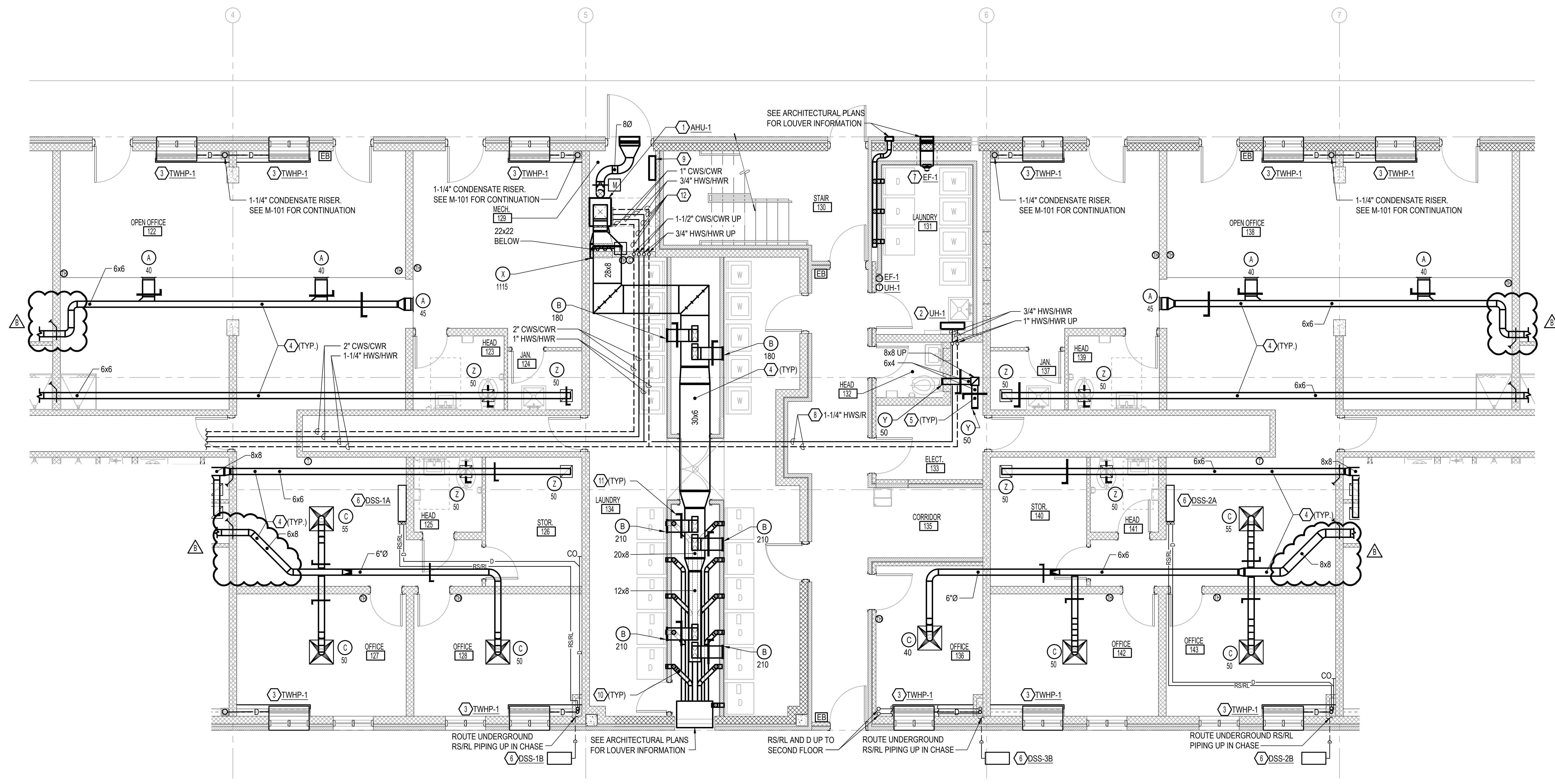
DISCLOSURE OF INFORMATION  
CONTRACTOR SHALL COMPLY AS FOLLOWS:  
(A) THE CONTRACTOR SHALL NOT RELEASE TO ANYONE OUTSIDE THE CONTRACTOR'S ORGANIZATION ANY UNCLASSIFIED INFORMATION, REGARDLESS OF MEDIUM (E.G., FILM, TAPE, DOCUMENT), PERTAINING TO ANY PART OF THIS CONTRACT OR ANY PROGRAM RELATED TO THIS CONTRACT, UNLESS:  
(1) THE CONTRACTING OFFICER HAS GIVEN PRIOR WRITTEN APPROVAL; OR  
(2) THE INFORMATION IS OTHERWISE IN THE PUBLIC DOMAIN BEFORE THE DATE OF RELEASE.  
(B) REQUESTS FOR APPROVAL SHALL IDENTIFY THE SPECIFIC INFORMATION TO BE RELEASED, THE MEDIUM TO BE USED, AND THE PURPOSE FOR THE RELEASE. THE CONTRACTOR SHALL SUBMIT ITS REQUEST TO THE CONTRACTING OFFICER AT LEAST 45 DAYS BEFORE THE PROPOSED DATE FOR RELEASE.  
(C) THE CONTRACTOR AGREES TO INCLUDE A SIMILAR REQUIREMENT IN EACH SUBCONTRACT UNDER HIS CONTRACT. SUBCONTRACTORS SHALL SUBMIT REQUESTS FOR AUTHORIZATION TO RELEASE THROUGH THE PRIME CONTRACTOR TO THE CONTRACTING OFFICER.



1/4" = 1'-0"		M-401	
The Walker Group Architecture, Inc. PO Box 541, New Bern, NC 28563 252.636.8778 (PHONE) 252.636.8992 (FAX)		DEPARTMENT OF THE NAVY NAVAL FACILITIES ENGINEERING COMMAND MARINE CORPS BASE CAMP LEJEUNE, NORTH CAROLINA	
DES. T. HAHN DR. C. LAMBERT CHK. J. KULENGUSKI SUBMITTED BY: B. WALKER DESIGN DIR. T.H. BURTON P.E.		REPAIR BEQ FC530	
APPROVED: PWO OR OICC DATE		SIZE CODE IDENT. NO F	
SATISFACTORY TO:		DATE	
SCALE: NOTED		SPEC. 20-0075	
SHEET 85 OF 141		NAVFAC DRAWING NO. 60035810 CONST. CONTR. NO. N40085-20-B-0075	



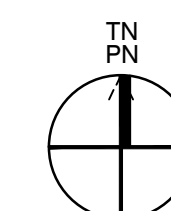
SYM	REVISIONS	DATE	APPROVED
8	AMENDMENT 010	08.04.22	



## NOTES THIS SHEET


- 1 PROVIDE AIR HANDLER AND CONCRETE PAD COMPLETE. ROUTE 1" CONDENSATE PIPING TO FLOOR DRAIN IN MECHANICAL ROOM. PROVIDE FLEXIBLE DUCT CONNECTORS AT DUCT CONNECTIONS TO THE EQUIPMENT.
- 2 PROVIDE UNIT HEATER, HANGERS, AND SUPPORTS COMPLETE.
- 3 PROVIDE THROUGH WALL HEAT PUMP AND ASSOCIATED APPURTENANCES COMPLETE. PROVIDE 3/4" CONDENSATE DRAIN PIPING, INSULATION, JACKETING, AND SUPPORTS COMPLETE WITHIN LIGATURE PROOF COVER. CONNECT TO CONDENSATE RISER.
- 4 PROVIDE DUCTWORK, INSULATION, HANGERS, AND SUPPORTS COMPLETE.
- 5 PROVIDE EXHAUST DUCTWORK, HANGERS, AND SUPPORTS COMPLETE.
- 6 PROVIDE DUCTLESS SPLIT SYSTEM. OUTDOOR EQUIPMENT PAD, REFRIGERANT PIPING, CONDENSATE PIPING, INSULATION, JACKETING, HANGERS, AND SUPPORTS COMPLETE. ROUTE RS/R. PIPING DOWN IN PIPING CHASE TO UNDERGROUND. UNDERGROUND PIPING SHALL BE IN WATERTIGHT CASING. CONDENSATE PIPING SHALL TIE INTO CONDENSATE RISER.
- 7 PROVIDE EXHAUST FAN, HANGERS, AND SUPPORTS COMPLETE IN EXISTING PENETRATION. ENLARGE AND PATCH PENETRATION AND MAKE WEATHER TIGHT.
- 8 PROVIDE HYDRONIC PIPING, INSULATION, JACKETING, HANGERS, AND SUPPORTS COMPLETE.
- 9 PROVIDE DDC PANEL COMPLETE.
- 10 PROVIDE 4"Ø DUCTWORK, HANGERS, AND SUPPORTS COMPLETE FROM LINT TRAP BOX TO DRYER. SEE DETAIL.
- 11 PROVIDE REMOTE CABLE ACTUATED DAMPER COMPLETE. LOCATE CABLE TERMINATION ABOVE ACCESS PANEL OR ACCESSIBLE CEILING TILE.
- 12 PROVIDE HYDRONIC PIPING, INSULATION, HANGERS, AND SUPPORTS COMPLETE. PROVIDE JACKETING WHERE REQUIRED PER SPECIFICATIONS.

**A CONSTRUCTION ENLARGED FLOOR PLAN**  
SCALE: 1/4" = 1'-0" M-101



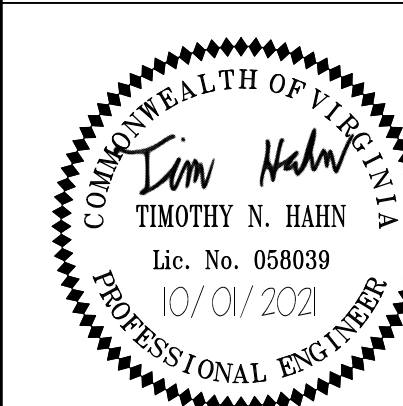
1/4" = 1'-0"

M-402

The Walker Group Architecture, Inc. P.O. Box 541, New Bern, NC 28563 252.636.8178 (PHONE) 252.636.8992 (FAX)		DEPARTMENT OF THE NAVY NAVAL FACILITIES ENGINEERING COMMAND <h1>MARINE CORPS BASE</h1> CAMP LEJEUNE, NORTH CAROLINA
	<h2>REPAIR BEQ FC530</h2>	
	<h3>MECHANICAL ENLARGED CONSTRUCTION FLOOR PLANS</h3>	
	DES. T. HAHN DR. C. LAMBERT CHK. J. KULENGUSKI SUBMITTED BY: B. WALKER DESIGN DIR. T.H. BURTON P.E.	SIZE CODE IDENT. NO. <div>F</div> NAVFAC DRAWING NO. <div>60035811</div> CONST. CONTR. NO. N40085-20-B-0075
APPROVED: PWO OR OIC  SATISFACTORY TO:	DATE  DATE	SCALE: NOTED SPEC. 20-0075 SHEET 86 OF 141

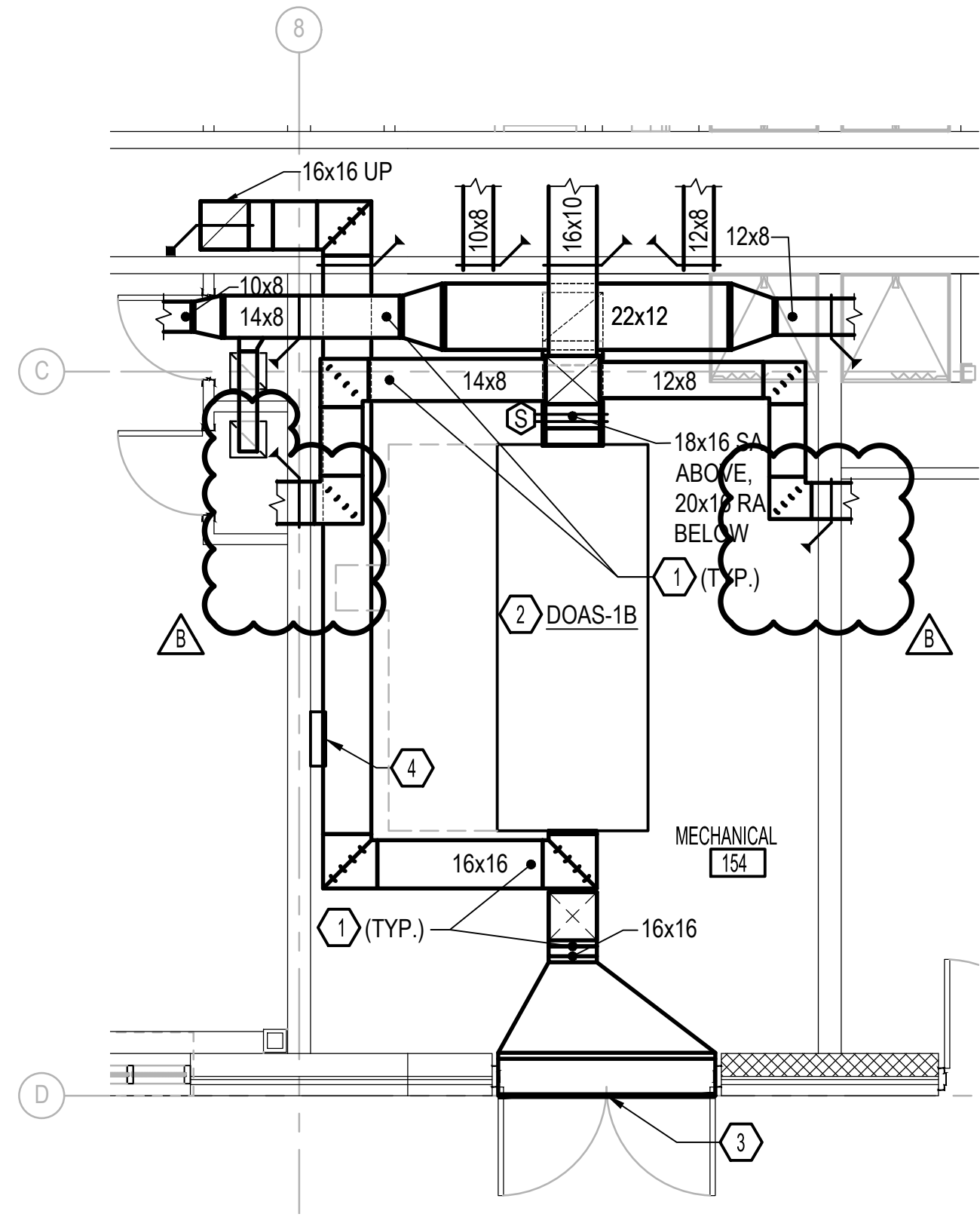
**DISCLOSURE OF INFORMATION**  
**CONTRACTOR SHALL COMPLY AS FOLLOWS:**

- (A) THE CONTRACTOR SHALL NOT RELEASE TO ANYONE OUTSIDE THE CONTRACTOR'S ORGANIZATION ANY UNCLASSIFIED INFORMATION REQUESTED BY MEDIAN (E.G., FLUJ, TALE DOCUMENT), PERTAINING TO ANY PART OF THIS CONTRACT OR ANY PROGRAM RELATED TO THIS CONTRACT, UNLESS:
- (1) THE CONTRACTING OFFICER HAS GIVEN PRIOR WRITTEN APPROVAL, OR
- (2) THE INFORMATION IS OTHERWISE IN THE PUBLIC DOMAIN BEFORE THE DATE OF RELEASE.
- (B) REQUESTS FOR APPROVAL SHALL IDENTIFY THE SPECIFIC INFORMATION TO BE RELEASED, THE MEDIUM TO BE USED, AND THE PURPOSE FOR THE RELEASE.
- (C) THE CONTRACTOR SHALL PROVIDE A WRITTEN RESPONSE TO THE CONTRACTING OFFICER AT LEAST 45 DAYS BEFORE THE PROPOSED DATE FOR RELEASE.
- (D) THE CONTRACTOR AGREES TO INCLUDE A SIMILAR REQUIREMENT IN EACH SUBCONTRACT UNDER HIS CONTRACT. SUBCONTRACTORS SHALL SUBMIT REQUESTS FOR AUTHORIZATION TO RELEASE THROUGH THE PRIME CONTRACTOR TO THE CONTRACTING OFFICER.

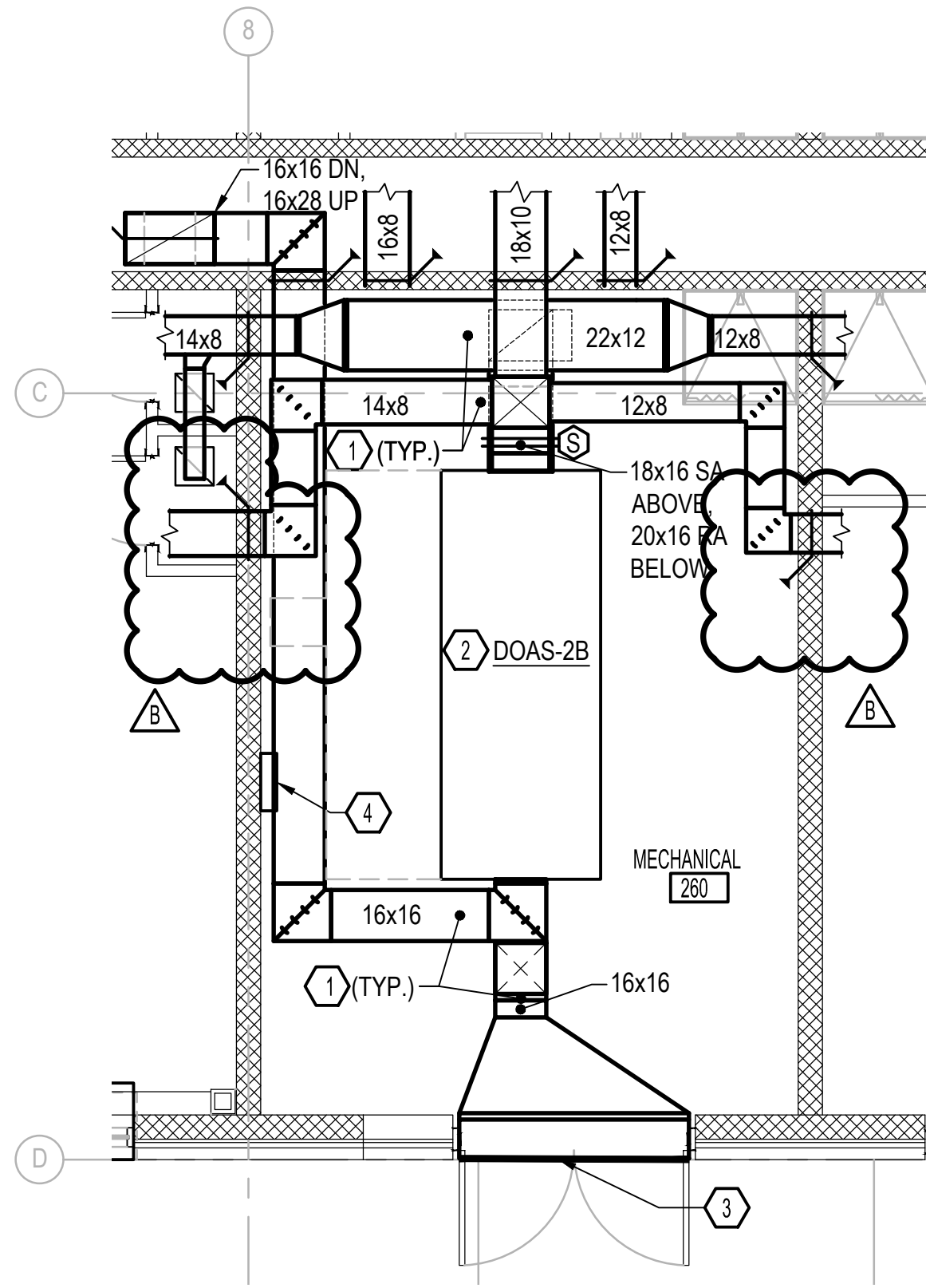




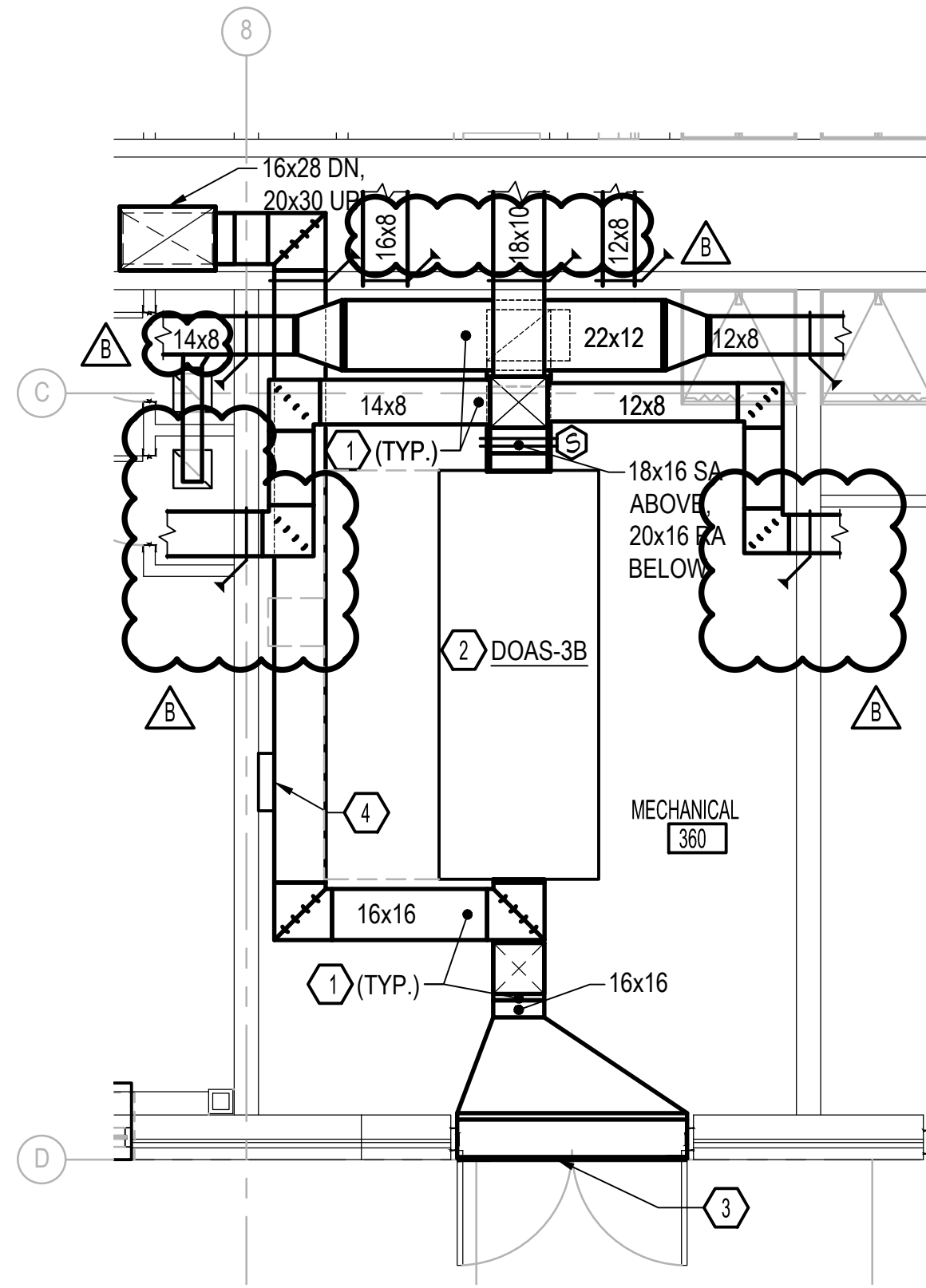
SYM	REVISIONS	DATE	APPROVED
A	AMENDMENT 010	08.04.22	



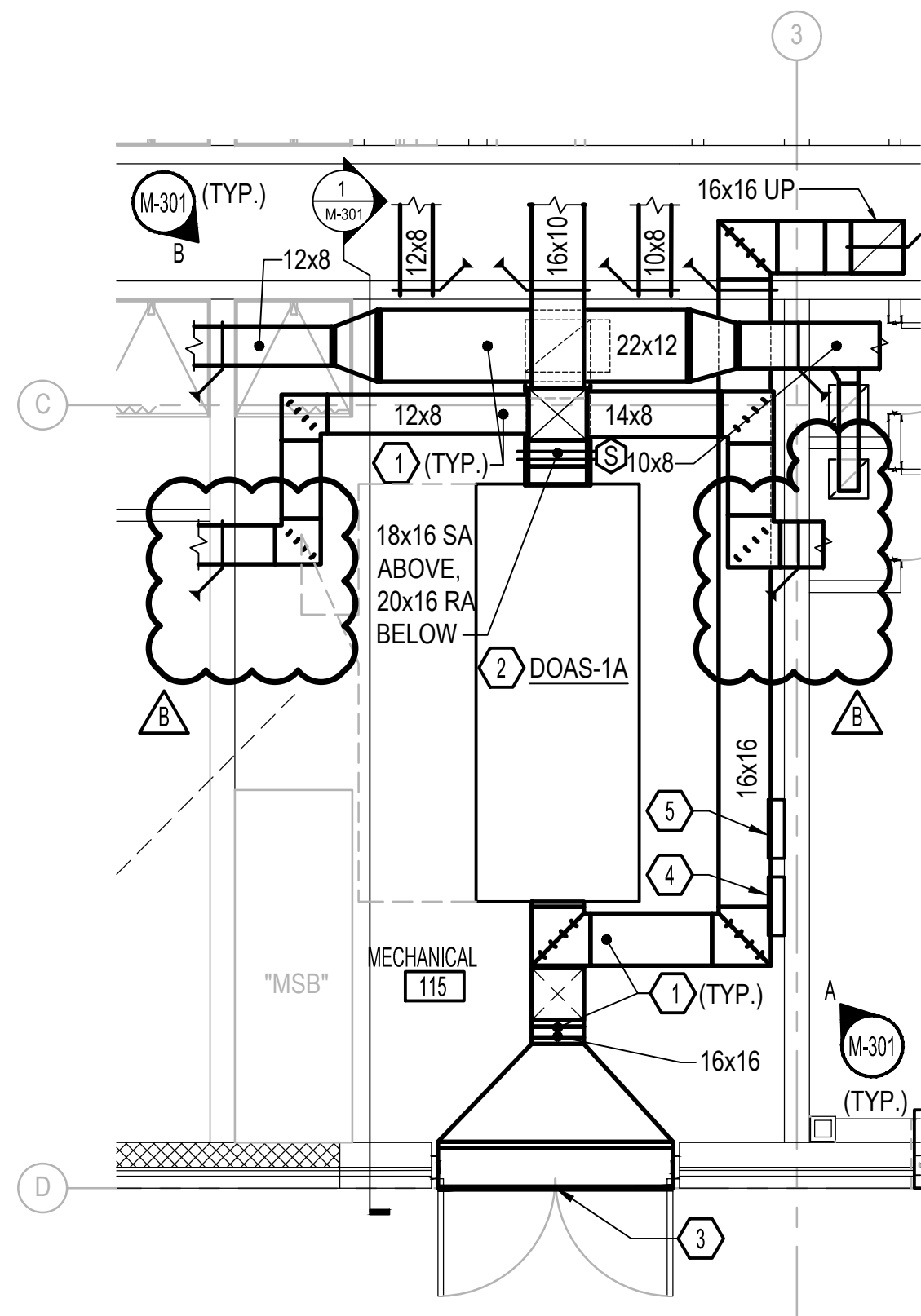
**A** MECHANICAL ENLARGED CONSTRUCTION FIRST FLOOR PLAN  
SCALE: 1/4" = 1'-0" M-101



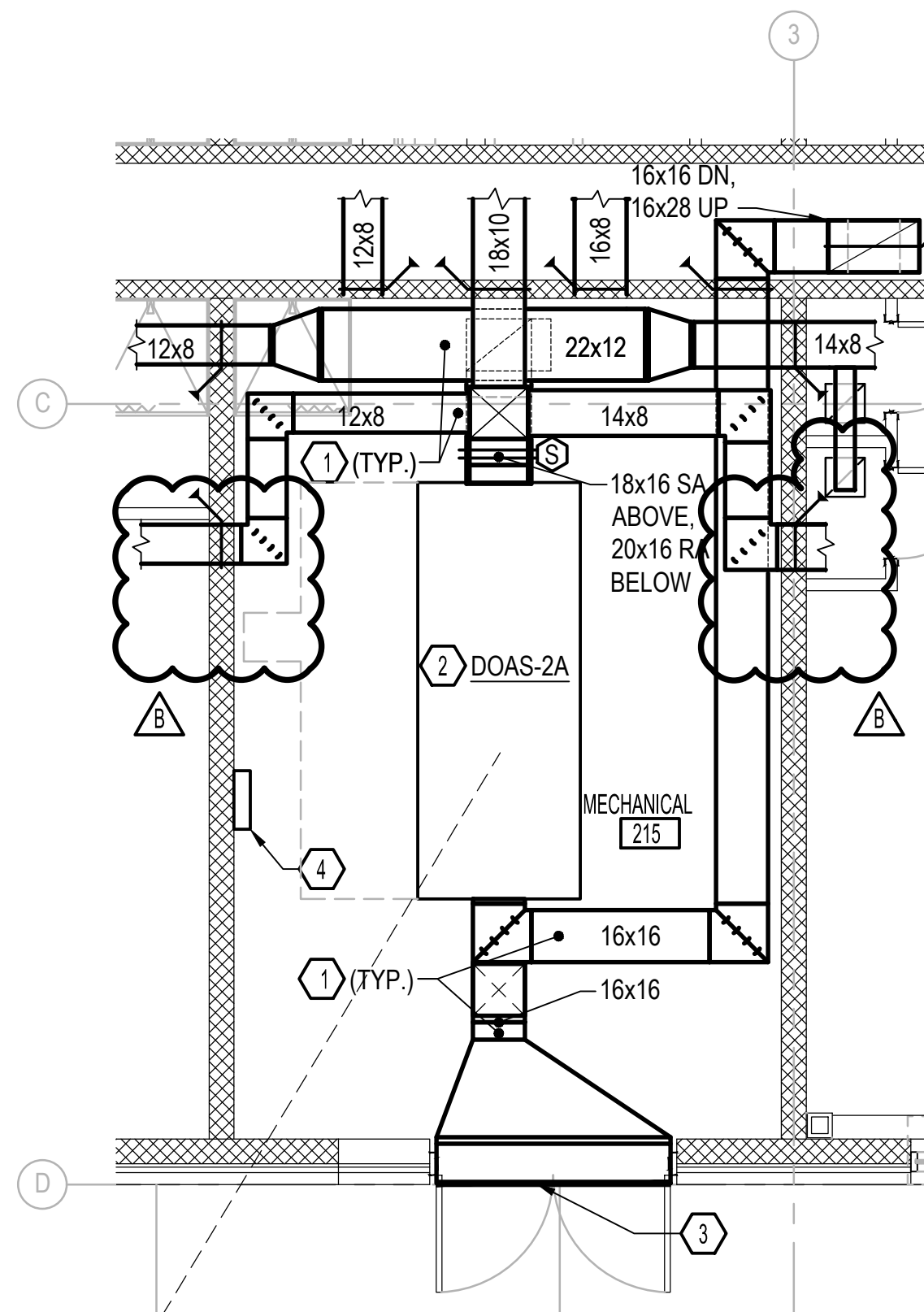
**B** MECHANICAL ENLARGED CONSTRUCTION SECOND FLOOR PLAN  
SCALE: 1/4" = 1'-0" M-101



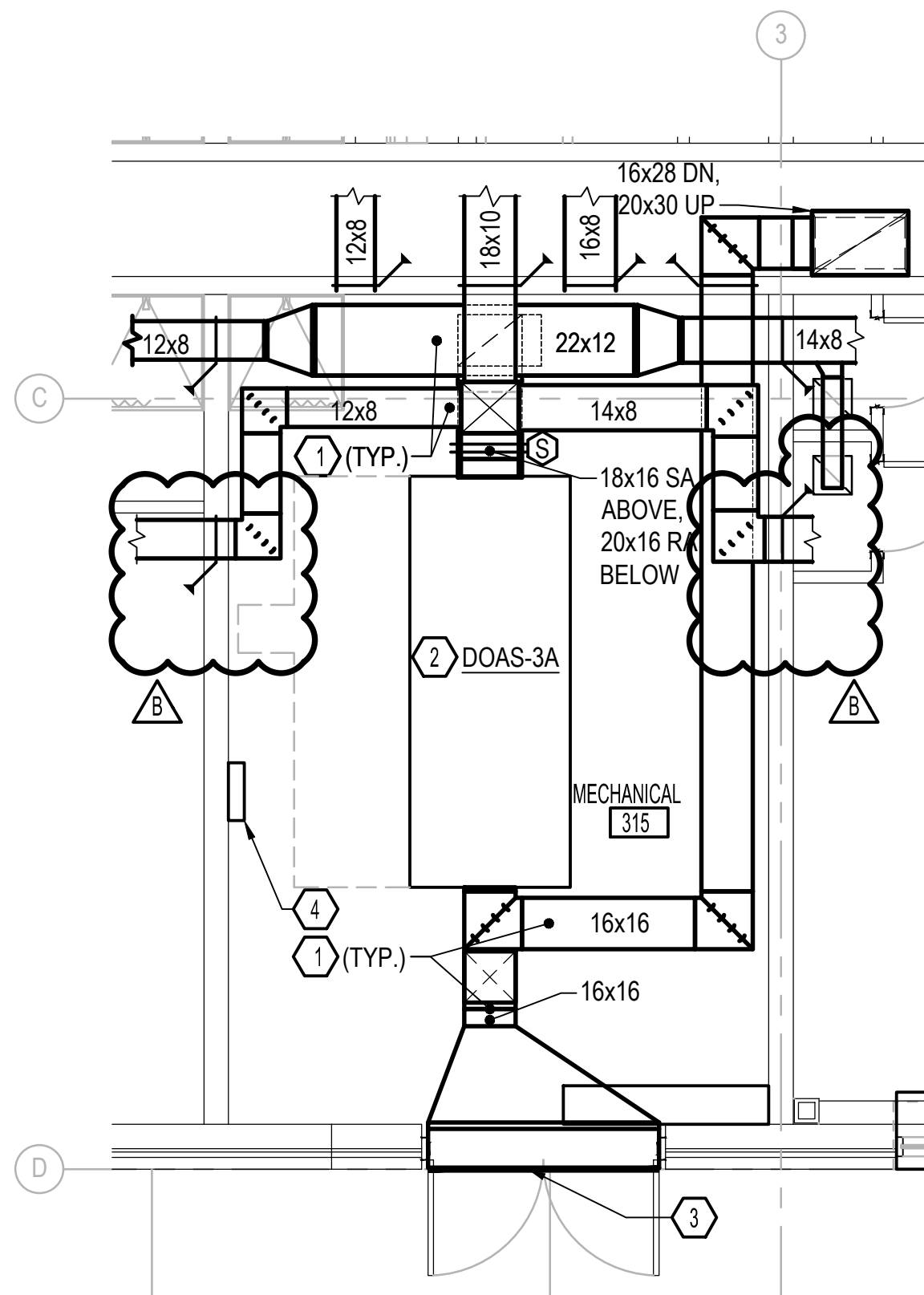
**C** MECHANICAL ENLARGED CONSTRUCTION THIRD FLOOR PLAN  
SCALE: 1/4" = 1'-0" M-101



**D** MECHANICAL ENLARGED CONSTRUCTION FIRST FLOOR PLAN  
SCALE: 1/4" = 1'-0" M-101



**E** MECHANICAL ENLARGED CONSTRUCTION SECOND FLOOR PLAN  
SCALE: 1/4" = 1'-0" M-101

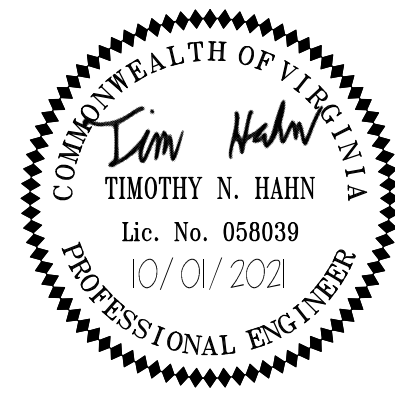



**F** MECHANICAL ENLARGED CONSTRUCTION THIRD FLOOR PLAN  
SCALE: 1/4" = 1'-0" M-101

#### NOTES THIS SHEET

- 1 PROVIDE DUCTWORK, INSULATION, HANGERS, AND SUPPORTS COMPLETE.
- 2 PROVIDE DEDICATED OUTDOOR AIR UNIT, CONCRETE PAD, AND ASSOCIATED APPURTENANCES COMPLETE. PROVIDE FLEXIBLE DUCT CONNECTORS AT DUCT CONNECTIONS TO THE EQUIPMENT.
- 3 LOUVER. REFER TO ARCHITECTURAL PLANS FOR LOUVER SIZE AND REQUIREMENTS. PROVIDE DUCTWORK TRANSITION TO FULL SIZE OF LOUVER COMPLETE.
- 4 PROVIDE DDC PANEL COMPLETE.
- 5 PROVIDE BUILDING SUPERVISORY BUILDING CONTROLLER COMPLETE.

DISCLOSURE OF INFORMATION  
CONTRACTOR SHALL COMPLY AS FOLLOWS:  
(A) THE CONTRACTOR SHALL NOT RELEASE TO ANYONE OUTSIDE THE CONTRACTOR'S ORGANIZATION ANY UNCLASSIFIED INFORMATION, REGARDLESS OF MEDIUM (E.G., FILM, TAPE, DOCUMENT), PERTAINING TO ANY PART OF THIS CONTRACT OR ANY PROGRAM RELATED TO THIS CONTRACT, UNLESS:  
(1) THE CONTRACTING OFFICER HAS GIVEN PRIOR WRITTEN APPROVAL; OR  
(2) THE INFORMATION IS OTHERWISE IN THE PUBLIC DOMAIN BEFORE THE DATE OF RELEASE.  
(B) REQUESTS FOR APPROVAL SHALL IDENTIFY THE SPECIFIC INFORMATION TO BE RELEASED, THE MEDIUM TO BE USED, AND THE PURPOSE FOR THE RELEASE. THE CONTRACTOR SHALL SUBMIT ITS REQUEST TO THE CONTRACTING OFFICER AT LEAST 45 DAYS BEFORE THE PROPOSED DATE FOR RELEASE.  
(C) THE CONTRACTOR AGREES TO INCLUDE A SIMILAR REQUIREMENT IN EACH SUBCONTRACT UNDER HIS CONTRACT. SUBCONTRACTORS SHALL SUBMIT REQUESTS FOR AUTHORIZATION TO RELEASE THROUGH THE PRIME CONTRACTOR TO THE CONTRACTING OFFICER.



1/4" = 1'-0"				<div>M-403</div>	
The Walker Group Architecture, Inc. P.O. Box 541, New Bern, NC 28563 252.636.8778 (PHONE) 252.636.8992 (FAX)		<div>WALKER GROUP ARCHITECTURE ESTABLISHED 1978</div>		DEPARTMENT OF THE NAVY NAVAL FACILITIES ENGINEERING COMMAND <div>MARINE CORPS BASE</div> <div>CAMP LEJEUNE, NORTH CAROLINA</div>	
DES. <b>T. HAHN</b> DR. <b>C. LAMBERT</b> CHK. <b>J. KULENGUSKI</b> SUBMITTED BY: <b>B. WALKER</b> DESIGN DIR. <b>T.H. BURTON P.E.</b>		REPAIR BEQ FC530			
APPROVED: PWO OR OICC		DATE		MECHANICAL ENLARGED CONSTRUCTION FLOOR PLANS	
SATISFACTORY TO:		DATE		SIZE CODE IDENT. NO <div>F</div> <div>NAVFAC DRAWING NO. 60035812 CONST. CONTR. NO. N40085-20-B-0075</div>	
SCALE: NOTED		SPEC. 20-0075		SHEET 87 OF 141	



SYM	REVISIONS	DATE	APPROVED
8	AMENDMENT 010	08.04.22	

DEDICATED OUTDOOR AIR UNIT SCHEDULE

TAG	SUPPLY FAN DATA						EXHAUST FAN DATA					WINTER FIXED PLATE		CHILLED WATER COOLING COIL DATA										SUMMER FIXED PLATE				HOT WATER HEATING COIL DATA								REMARKS	
	OUTSIDE AIR (C.F.M.)	E.S.P. (IN. WG.)	H.P.	FAN TYPE	ELECTRICAL DATA		EXHAUST AIR (C.F.M.)	E.S.P. (IN. WG.)	H.P.	ELECTRICAL DATA		E.A.T (°F)	L.A.T. (°F)	TOTAL CAPACITY M.B.H.	SENS. CAPACITY M.B.H.	E.D.B. (°F)	E.W.B. (°F)	L.D.B. (°F)	L.W.B. (°F)	E.W.T. (°F)	L.W.T. (°F)	G.P.M.	MAX. A.P.D. (IN. WG.)	MAX. W.P.D. (FT. WG.)	E.A.T DB (°F)	E.A.T WB (°F)	L.A.T DB (°F)	L.A.T. WB (°F)	TOTAL CAPACITY M.B.H.	E.D.B. (°F)	L.D.B. (°F)	E.W.T. (°F)	G.P.M.	L.W.T. (°F)	MAX. A.P.D. (IN. WG.)		MAX. W.P.D. (FT. WG.)
					VOLTS	PHASE				VOLTS	PHASE																										
DOAS-1A	1530	1.00	3	DIRECT	208	3	1300	1.50	3	208	3	26	68.0	101.4	54.4	83.1	71.8	51	50.9	44	54	20.5	0.59	12.10	91	77	81.0	71.0	60.5	48.6	85.0	140	3.14	100	0.12	3.95	SEE NOTES
DOAS-1B	1570	1.00	3	DIRECT	208	3	1300	1.50	3	208	3	26	49.9	104.5	55.1	83.1	71.8	51	50.9	44	54	21.0	0.5	12.70	91	77	82.8	71.4	64.2	48.6	85.0	140	3.14	100	0.12	3.95	SEE NOTES
DOAS-2A	1875	1.00	3	DIRECT	208	3	1650	1.50	3	208	3	26	68.0	125.1	66.1	83.1	71.8	51	50.9	44	54	25.0	1.04	6.55	91	77	81.0	71.0	74.0	48.6	85.0	140	3.90	100	0.17	5.79	SEE NOTES
DOAS-2B	1875	1.00	3	DIRECT	208	3	1650	1.50	3	208	3	26	68.0	125.1	66.1	83.1	71.8	51	50.9	44	54	25.0	1.04	6.55	91	77	81.0	71.0	74.0	48.6	85.0	140	3.90	100	0.17	5.79	SEE NOTES
DOAS-3A	1875	1.00	3	DIRECT	208	3	1650	1.50	3	208	3	26	68.0	125.1	66.1	83.1	71.8	51	50.9	44	54	25.0	1.04	6.55	91	77	81.0	71.0	74.0	48.6	85.0	140	3.90	100	0.17	5.79	SEE NOTES
DOAS-3B	1915	1.00	3	DIRECT	208	3	1650	1.50	3	208	3	26	43.4	127.2	67.1	83.1	71.8	51	50.9	44	54	25.5	1.04	6.79	91	77	82.6	71.5	87.2	43.4	85.0	140	3.90	100	0.20	5.81	SEE NOTES

- NOTES:
1. LEAVING AIR TEMPERATURE IS TO BE PROVIDED AT THE UNIT DISCHARGE. TOTAL & SENSIBLE CAPACITIES ARE "NET" VALUES TO BE PROVIDED DOWNSTREAM OF THE SUPPLY AIR FAN.
  2. PROVIDE WITH INVERTER DUTY RATED MOTOR(S) AND VARIABLE FREQUENCY DRIVE(S), BACNET MS/TP INTERFACE, AND 22 GAUGE GALVANIZED STEEL EXTERIOR CASING WITH 1" THICK CLOSED CELL FOAM INSULATION (NON VOC) FOR ENTIRE UNIT..
  3. PROVIDE WITH THE FOLLOWING SECTIONS: FLAT FILTER, TOTAL ENTHALPY CORE, COOLING COIL, REHEAT COIL, SUPPLY FAN AND EXHAUST FAN.
  4. FIXED PLATE TOTAL ENTHALPY CORE SHALL HAVE AN EXHAUST AIR TRANSPORT RATIO OF LESS THAN 0.5% AS TESTED TO AHRI 1060. THE CASING LEAKAGE RATE SHALL NOT EXCEED 0.50 CFM PER SQUARE FOOT OF CASING SURFACE AREA AT POSITIVE PRESSURE -5" WC AND -6" WC AT NEGATIVE PRESSURE SECTIONS.
  5. PROVIDE ALL OUTSIDE AIR INTAKES AND EXHAUST AIR OPENINGS WITH LOW LEAKAGE DAMPERS. LOW LEAKAGE DAMPERS SHALL HAVE A MINIMUM LEAKAGE RATE OF 3 CFM/SQUARE FOOT WITH A DIFFERENTIAL PRESSURE OF ONE INCH GAUGE AGAINST THE DAMPER.
  6. PROVIDE WITH FREE STANDING SPRING ISOLATOR THAT ARE Laterally Stable WITHOUT HOUSING AND COMPLETE WITH A MOLDED NEOPRENE CUP OR 1/4" NEOPRENE ACOUSTICAL FRICTION PAD BETWEEN THE BASEPLATE AND THE SUPPORT. SPRING ISOLATOR SHALL BE CAPABLE OF MINIMUM 0.75" DEFLECTION.

AIR HANDLING UNIT SCHEDULE

TAG	TYPE	SUPPLY FAN DATA								CHILLED WATER COOLING COIL DATA										HOT WATER HEATING COIL DATA								REMARKS
		S.A. C.F.M. (MAX/MIN)	O.A. C.F.M.	E.S.P. (IN. WG.)	H.P.	FAN TYPE	ELECTRICAL DATA				TOTAL CAPACITY M.B.H.	SENS. CAPACITY M.B.H.	E.D.B. (°F)	E.W.B. (°F)	E.W.T. (°F)	L.W.T. (°F)	G.P.M.	MAX. A.P.D. (IN. WG.)	MAX. W.P.D. (FT. WG.)	TOTAL CAPACITY M.B.H.	E.D.B. (°F)	L.D.B. (°F)	E.W.T. (°F)	G.P.M.	L.W.T. (°F)	MAX. A.P.D. (IN. WG.)	MAX. W.P.D. (FT. WG.)	
							VOLTS	PHASE	M.C.A.	MOCP																		
AHU-1	UPFLOW	1200 / 600	85	0.75	1	DIRECT	208	3	6	15	42.6	32.2	76.1	63.8	44	54	8.48	0.88	5.63	23.6	66.9	85.0	140	1.4	106	0.19	0.10	SEE NOTES
AHU-2	UPFLOW	840 / 420	250	0.50	1	DIRECT	208	3	6	15	43.6	25.2	79.8	69.2	44	54	8.68	1.09	11.42	26.4	56.0	85.0	140	1.5	106	0.20	0.23	SEE NOTES
AHU-3	UPFLOW	840 / 420	250	0.50	1	DIRECT	208	3	6	15	43.6	25.2	79.8	69.2	44	54	8.68	1.09	11.42	26.4	56.0	85.0	140	1.5	106	0.20	0.23	SEE NOTES

- NOTES:
1. PROVIDE EQUIPMENT WITH 22 GAUGE GALVANIZED STEEL EXTERIOR CASING WITH 1" THICK CLOSED CELL FOAM INSULATION (NON VOC) FOR ENTIRE UNIT, 18 GAUGE STAINLESS STEEL DRAIN PAN, AND 2" MERV 8 FILTER.
  2. LEAVING AIR TEMPERATURE IS TO BE PROVIDED AT THE UNIT DISCHARGE. TOTAL & SENSIBLE CAPACITIES ARE "NET" VALUES TO BE PROVIDED DOWNSTREAM OF THE SUPPLY AIR FAN.
  3. PROVIDE WITH DIRECT DRIVE PLENUM FANS WITH VARIABLE SPEED EC MOTORS.
  4. PROVIDE WITH THE FOLLOWING SECTIONS: ANGLED FILTER, COOLING COIL, REHEAT COIL, AND FAN.
  5. PROVIDE WITH BACNET MS/TP INTERFACE.
  6. PROVIDE WITH FREE STANDING SPRING ISOLATOR THAT ARE Laterally Stable WITHOUT HOUSING AND COMPLETE WITH A MOLDED NEOPRENE CUP OR 1/4" NEOPRENE ACOUSTICAL FRICTION PAD BETWEEN THE BASEPLATE AND THE SUPPORT. SPRING ISOLATOR SHALL BE CAPABLE OF MINIMUM 0.75" DEFLECTION.

GRILLE, REGISTER & DIFFUSER SCHEDULE

TAG	TYPE	SERVICE	C.F.M. RANGE	NECK SIZE	MAX. P.D.	REMARKS
A	DIFFUSER	SUPPLY	40-125	8x6	0.1	DOUBLE DEFLECTION, 3/4" BLADE SPACING, FRONT BLADES IN SHORT DIMENSION.
B	DIFFUSER	SUPPLY	140-210	12x6	0.1	DOUBLE DEFLECTION, 3/4" BLADE SPACING, FRONT BLADES IN SHORT DIMENSION.
C	DIFFUSER	SUPPLY	40-55	6"Ø	0.1	LAY-IN, 24x24 PANEL, 4-WAY BLOW PATTERN, ADJUSTABLE DISCHARGE, LOUVERED FACE
X	GRILLE	RETURN	170-1,115	18x18	0.1	1/2"X1/2"X1/2" EGGRATE CORE, 45° BLADE DEFLECTION, SIGHT PROOF.
Y	GRILLE	EXHAUST	50	8x6	0.1	1/2"X1/2"X1/2" EGGRATE CORE, 45° BLADE DEFLECTION, SIGHT PROOF.
Z	GRILLE	EXHAUST	20-100	6x6	0.1	1/2"X1/2"X1/2" EGGRATE CORE, 45° BLADE DEFLECTION, SIGHT PROOF.

- THE FOLLOWING NOTES ARE TYPICAL UNLESS OTHERWISE NOTED:
1. PROVIDE ALUMINUM DIFFUSERS AND REGISTERS WITH OPPOSED BLADE VOLUME DAMPERS, BAKED STANDARD WHITE ENAMEL FINISH (INCLUDING HEAD OF SCREWS), MAXIMUM NC=25 AT HIGHEST CFM AND PROVIDE SQUARE TO ROUND TRANSITION AS REQUIRED.
  2. PROVIDE 4-WAY PATTERN CEILING DIFFUSERS, U.O.N. ON PLANS OR SCHEDULE.
  3. MAXIMUM PRESSURE DROP SHALL INCLUDE VOLUME DAMPER WHERE DAMPER IS PROVIDED.

AIR COOLED CHILLER SCHEDULE

TAG	CAPACITY (TONS)	EVAPORATOR						CONDENSER FAN		COMPRESSOR		ELECTRICAL DATA				REMARKS
		G.P.M.	P.D.(FT.)	E.W.T.(°F)	L.W.T.(°F)	EER	IPLV EER	QUANTITY	F.L.A	TYPE	QUANTITY	M.C.A.	M.O.C.P.	VOLTS	PHASE	
CH-1	80	168	12.9	54	44	9.19	13.87	6	6.2	SCROLL	4	354	400	208	3	SEE NOTES

- NOTES:
1. COIL COATINGS SHALL MEET 6,000 HOUR SALT SPRAY TEST IN ACCORDANCE WITH ASTM B177-90.
  2. PROVIDE WITH CONTROL VOLTAGE TRANSFORMER AND SEPARATE 120 VOLT CIRCUIT FOR EVAPORATOR HEAT TAPE.
  3. PROVIDE MANUFACTURER'S DDC CONTROL PANEL, CONDENSER COIL GUARDS, SOUND ATTENUATION PACKAGE, AND WIDE AMBIENT CONDENSER.
  4. PROVIDE WITH SINGLE POINT POWER CONNECTION AND INTEGRAL DISCONNECT.
  5. PROVIDE WITH BACNET MS/TP INTERFACE, AND MANUFACTURER'S VIBRATION ISOLATION PADS.
  6. CAPACITY BASED ON 96°F AMBIENT.
  7. BRAZED PLATE HEAT EXCHANGER IS ACCEPTABLE IF A 10 YEAR PARTS AND LABOR WARRANTY IS PROVIDED.

THROUGH WALL HEAT PUMP SCHEDULE

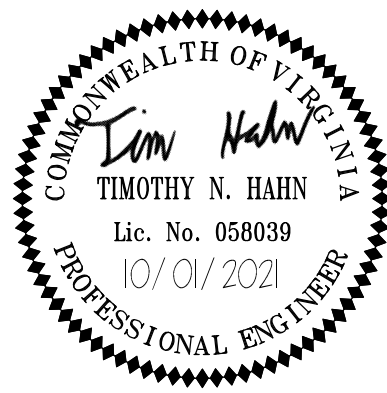
TAG	FAN DATA	COOLING DATA			HEATING DATA		SUPPLEMENTAL ELECTRIC HEATER	ELECTRICAL DATA				REMARKS
	HIGH/LOW AIR C.F.M.	TOTAL M.B.H.	EER	DEHUMIDIFICATION (PINTS / HR.)	TOTAL M.B.H.	C.O.P.	SIZE KW	M.C.A.	M.O.C.P.	VOLTS	PHASE	
TWHP-1	400	12.0	12.0	2.8	12.0	3.6	2.45	17.2	20	208	1	SEE NOTES

- NOTES:
1. PROVIDE WITH WALL MOUNTED PROGRAMMABLE THERMOSTAT/HUMIDISTAT AND INTERFACED WITH DDC CONTROL SYSTEM.
  2. COOLING CAPACITY BASED ON E.A.T. = 75°F DB/60°F AMBIENT AIR TEMPERATURE.
  3. HEATING CAPACITY BASED ON E.A.T. = 68°F DB AND 22°F AMBIENT AIR TEMPERATURE.
  4. SUPPLEMENTAL ELECTRIC HEATER F.L.A. INCLUDED. ONE DISCONNECT SWITCH REQUIRED FOR EACH INDOOR UNIT.
  5. PROVIDE MANUFACTURERS STANDARD SUB-BASE, DRAIN KIT, LEVELING LEGS, POWER CORD, EXTERIOR GRILLE, AND CORROSION PROTECTION.
  6. PROVIDE WITH ANTI-LIGATURE COVERS EQUIPPED WITH 1/2" INSULATION, FRONT ACCESS PANEL, AND INSULATED SUPPLY CONNECTION FROM TWHP TO ANTI-LIGATURE COVER. REFER TO ARCHITECTURAL DOCUMENTS FOR ADDITIONAL ANTI-LIGATURE COVER REQUIREMENTS.

HOT WATER UNIT HEATER SCHEDULE

TAG	C.F.M.	M.B.H.	AIR TEMPERATURE		E.W.T.	L.W.T.	P.D. FT.	GPM	ELECTRICAL DATA			REMARKS
			E.A.T	L.A.T.					HP	VOLTS	PHASE	
UH-1	730	17.3	60.0	82.0	140	128	0.3	3.0	1/12	115	1	SEE NOTES
UH-2	730	17.3	60.0	82.0	140	128	0.3	3.0	1/12	115	1	SEE NOTES
UH-3	730	17.3	60.0	82.0	140	128	0.3	3.0	1/12	115	1	SEE NOTES

- NOTES:
1. PROVIDE WITH WALL MOUNTED BACNET MS/TP THERMOSTAT.



DISCLOSURE OF INFORMATION  
CONTRACTOR SHALL COMPLY AS FOLLOWS:  
(A) THE CONTRACTOR SHALL NOT RELEASE TO ANYONE OUTSIDE THE CONTRACTOR'S ORGANIZATION ANY UNCLASSIFIED INFORMATION, REGARDLESS OF MEDIUM (E.G., FILM, TAPE, DOCUMENT), PERTAINING TO ANY PART OF THIS CONTRACT OR ANY PROGRAM RELATED TO THIS CONTRACT, UNLESS:  
(1) THE CONTRACTING OFFICER HAS GIVEN PRIOR WRITTEN APPROVAL; OR  
(2) THE INFORMATION IS OTHERWISE IN THE PUBLIC DOMAIN BEFORE THE DATE OF RELEASE.  
(B) REQUESTS FOR APPROVAL SHALL IDENTIFY THE SPECIFIC INFORMATION TO BE RELEASED, THE MEDIUM TO BE USED, AND THE PURPOSE FOR THE RELEASE. THE CONTRACTOR SHALL SUBMIT ITS REQUEST TO THE CONTRACTING OFFICER AT LEAST 45 DAYS BEFORE THE PROPOSED DATE FOR RELEASE.  
(C) THE CONTRACTOR AGREES TO INCLUDE A SIMILAR REQUIREMENT IN EACH SUBCONTRACT UNDER HIS CONTRACT. SUBCONTRACTORS SHALL SUBMIT REQUESTS FOR AUTHORIZATION TO RELEASE THROUGH THE PRIME CONTRACTOR TO THE CONTRACTING OFFICER.

The Walker Group Architecture, Inc. WALKER GROUP ARCHITECTURE  
P.O. Box 541, New Bern, NC 28563  
252.636.8778 (PHONE)  
252.636.8992 (FAX)

DEPARTMENT OF THE NAVY NAVAL FACILITIES ENGINEERING COMMAND  
MARINE CORPS BASE  
CAMP LEJEUNE, NORTH CAROLINA

REPAIR BEQ FC530

MECHANICAL SCHEDULES

APPROVED: PWO OR OICC DATE SIZE CODE IDENT. NO. NAVFAC DRAWING NO. 60035818

SATISFACTORY TO: DATE CONST. CONTR. NO. N40085-20-B-0075 SCALE: NOTED SPEC. 20-0075 SHEET 93 OF 141