

LEGEND:

SPOT ELEVATION

TOP OF CONCRETE (TC) ELEVATION
ELEVATION OF PAVEMENT OR GROUND

BITUMINOUS PAVEMENT

BOLLARD

BUILDING (BLDG.)

CENTERLINE DITCH/SWALE

CONCRETE (CONC. OR PCC) PAVEMENT

CONCRETE (CONC.) PAVEMENT JOINTS

CONCRETE (CONC.) WALK

CONTOUR

FENCE

FIRE MAIN

GATE

JERSEY BARRIER/ FENCE

LIMITS OF DISTURBANCE (LOD)

SIGN

SILT FENCE (SF)

TEMPORARY BENCH MARK (TBM)

TOE OF SLOPE

TOP OF BANK

GAS

SANITARY (SAN.) SEWER

SANITARY (SAN.) SEWER FORCE MAIN (F.M.)

STORM (S.) SEWER

UNDERGROUND (UG.) COMMUNICATIONS (COMM.)

UNDERGROUND (UG.) ELECTRIC (ELEC.)

UNDERGROUND (UG.) GROUND (GD.)

WATER (W.) MAIN

UNDERGROUND (UG.) COLD WATER (C.W.) MAIN

CATCH BASIN (C.B.)

CLEANOUT (C.O.)

FIRE HYDRANT (F.H.)

MANHOLE (MH.)

EXISTING (E.)

IMPROVEMENTS

× 8.06

16.57

TC 16.96
16.5

○ 7

CONC.

7

CONC.

8

13

78

6" FIRE

JERSEY BARRIER/ FENCE

JB JB

LIMITS OF DISTURBANCE (LOD)

LOD LOD

SIGN

SILT FENCE (SF)

SF SF

TEMPORARY BENCH MARK (TBM)

TOE OF SLOPE

T.O.S.

T.O.S.

TOP OF BANK

T.O.B.

T.O.B.

GAS

2" E. GAS

2" GAS

SANITARY (SAN.) SEWER

8" E. SAN.

SANITARY (SAN.) SEWER FORCE MAIN (F.M.)

12" E. SAN. F.M.

STORM (S.) SEWER

12" S.

6" S.

UNDERGROUND (UG.) COMMUNICATIONS (COMM.)

E. UG. COMM.

UNDERGROUND (UG.) ELECTRIC (ELEC.)

E. UG. ELEC.

UNDERGROUND (UG.) GROUND (GD.)

E. UG. GD.

WATER (W.) MAIN

8" E. W.

1 1/2" W.

UNDERGROUND (UG.) COLD WATER (C.W.) MAIN

E. UG. C.W.

CATCH BASIN (C.B.)

E. C.B.

CLEANOUT (C.O.)

C.O.

FIRE HYDRANT (F.H.)

F.H.

MANHOLE (MH.)

E. MH.

LEGEND:

MONITORING WELL

EXISTING (E.)

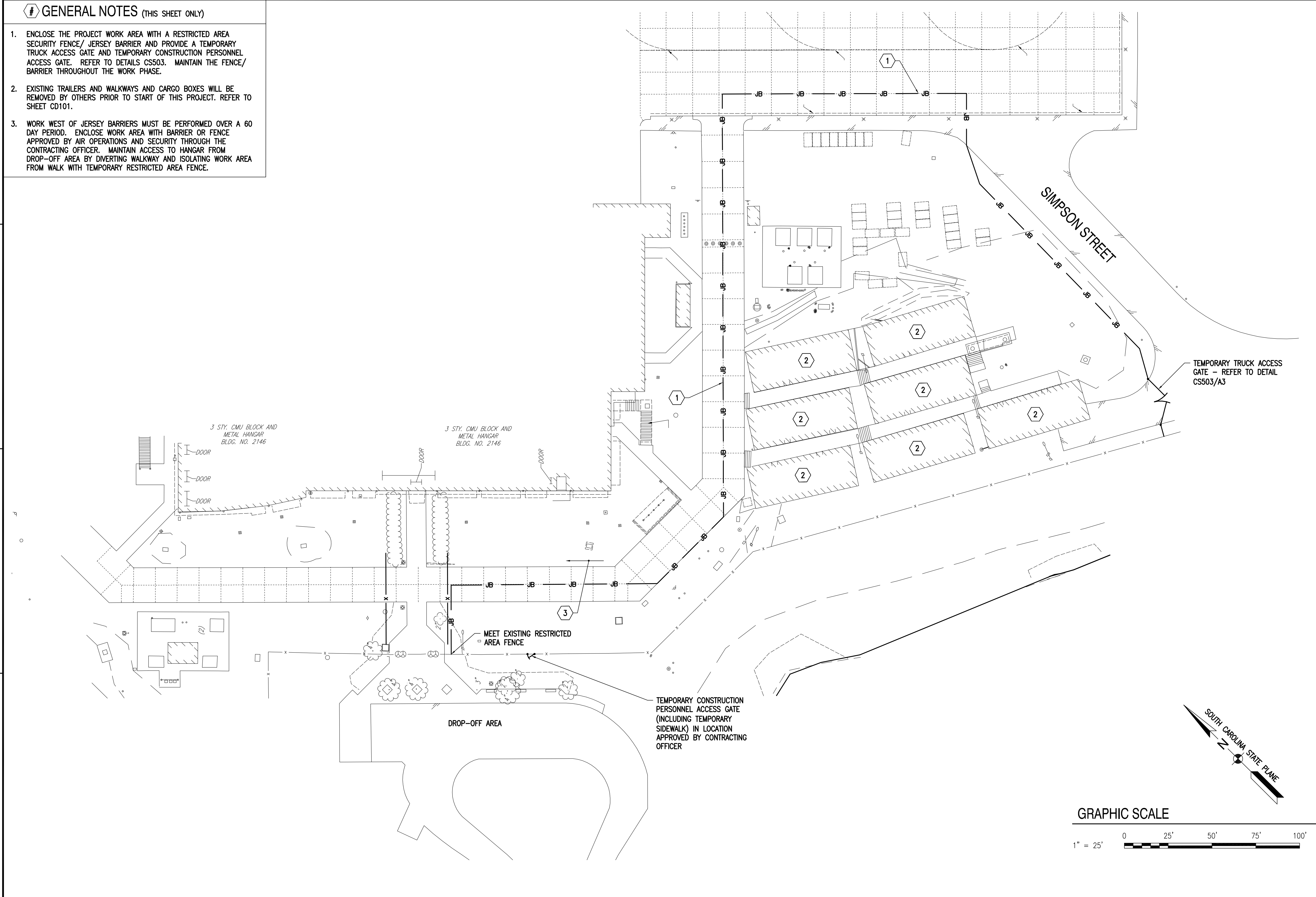
IMPROVEMENTS

•

POST INDICATOR VALVE (P.I.V.)

P.I.V.

FILE NAME: K:\CAD\20040\RTA_Resubmittal\02-04-22\BLDG-P485-1362850-C-004.dwg LAYOUT NAME: C-004 PLOTTED: Thursday, February 03, 2022 - 10:34am USER: rfw



GENERAL NOTES (THIS SHEET ONLY)

1. ENCLOSE THE PROJECT WORK AREA WITH A RESTRICTED AREA SECURITY FENCE/ JERSEY BARRIER AND PROVIDE A TEMPORARY TRUCK ACCESS GATE AND TEMPORARY CONSTRUCTION PERSONNEL ACCESS GATE. REFER TO DETAILS CS503. MAINTAIN THE FENCE/ BARRIER THROUGHOUT THE WORK PHASE.
2. EXISTING TRAILERS AND WALKWAYS AND CARGO BOXES WILL BE REMOVED BY OTHERS PRIOR TO START OF THIS PROJECT. REFER TO SHEET CD101.
3. WORK WEST OF JERSEY BARRIERS MUST BE PERFORMED OVER A 60 DAY PERIOD. ENCLOSE WORK AREA WITH BARRIER OR FENCE APPROVED BY AIR OPERATIONS AND SECURITY THROUGH THE CONTRACTING OFFICER. MAINTAIN ACCESS TO HANGAR FROM DROP-OFF AREA BY DIVERTING WALKWAY AND ISOLATING WORK AREA FROM WALK WITH TEMPORARY RESTRICTED AREA FENCE.

APPROVED	DATE	ASPR
FOR COMMANDER NAVFAC		
ACTIVITY		
Approved by J. Scott Roberts, Asset Management Branch Head & Supervisory Facility Planner, PWD Branch: SC-16 email:		
SATISFACTORY TO	DATE	12/17/2021
DES CAB	DRW CAD	CHK ALB
PM/DM		CJW/SVR
BRANCH MANAGER		DLB
CHIEF ENGINEER		EJA
FIRE PROTECTION		DSN
DEPARTMENT OF THE NAVY		
NAVAL FACILITIES ENGINEERING SYSTEMS COMMAND		
NAVAL FACILITIES ENGINEERING SYSTEMS COMMAND - MID-ATLANTIC		
MCAS BEAUFORT		
BEAUFORT, SC		
P-485 F35 OPERATIONS SUPPORT FACILITY (OSF)		
CONSTRUCTION PHASING PLAN		
SCALE: GRAPHIC		
PROJECT NO.: 1362850		
CONSTR. CONTR. NO.		
NAVFAC DRAWING NO.		
12854034		
SHEET 13 OF 129		
C-004		
DRAWING REVISION: 28 AUGUST 2020		

FILE NAME: K:\CAD\2004\04\RTA_Resubmittal 02-04-22\BLDG-P485-1362850-CV101.dwg LAYOUT NAME: CV101 PLOTTED: Thursday, February 03, 2022 - 10:35am USER: mhw

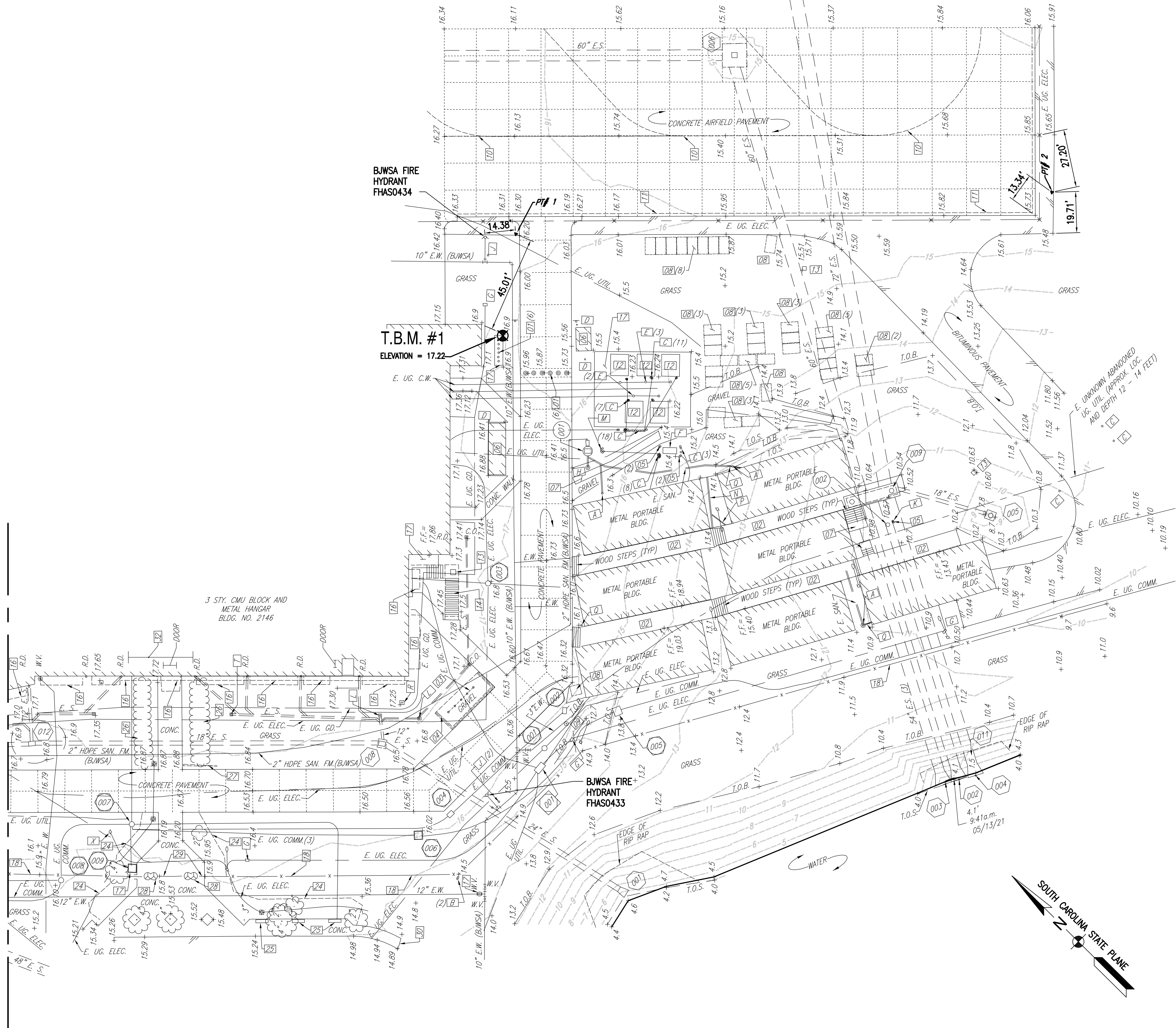
D

C

B

A

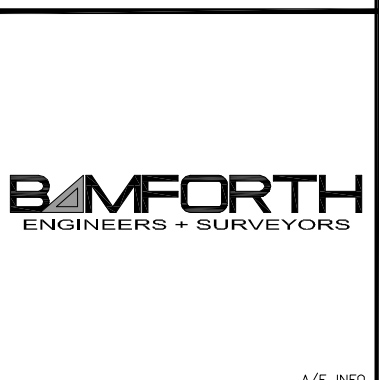
MATCHLINE SEE SHEET CV102



GRAPHIC SCALE



SYN	DESCRIPTION	DATE	APPR



A/E INFO

APPROVED

FOR COMMANDER NAVFAC

ACTIVITY

Approved by J. Scott Roberts, Asset Management Branch Head & Supervisory Facility Planner, PWD Branch, SC-10 email

SATISFACTORY TO DATE 12/17/2021

DES CAB DRW CAD CHK ALB

PMIDM CJS/SVR

BRANCH MANAGER DLB

CHIEF ENGINEER EJA

FIRE PROTECTION DSN

DEPARTMENT OF THE NAVY

NAVAL FACILITIES ENGINEERING SYSTEMS COMMAND

NAVAL FACILITIES ENGINEERING SYSTEMS COMMAND - MID-ATLANTIC

DC-CORE

MCAS BEAUFORT

BEAUFORT, SC

P-485 F35 OPERATIONS SUPPORT FACILITY (OSF)

EXISTING CONDITIONS PLAN

SCALE: GRAPHIC

PROJECT NO.: 1362850

CONSTR. CONTR. NO.

NAVFAC DRAWING NO.

12854035

SHEET 14 OF 129

CV101

DRAWING REVISION: 28 AUGUST 2020

D

C

B

A

FILE NAME: K:\CAD\2004\04\RTA_Resubmittal 02-04-22\BUDG-P485-1362850-CD101.dwg LAYOUT NAME: CD101 PLOTTED: Thursday, February 03, 2022 - 10:35am USER: mhw

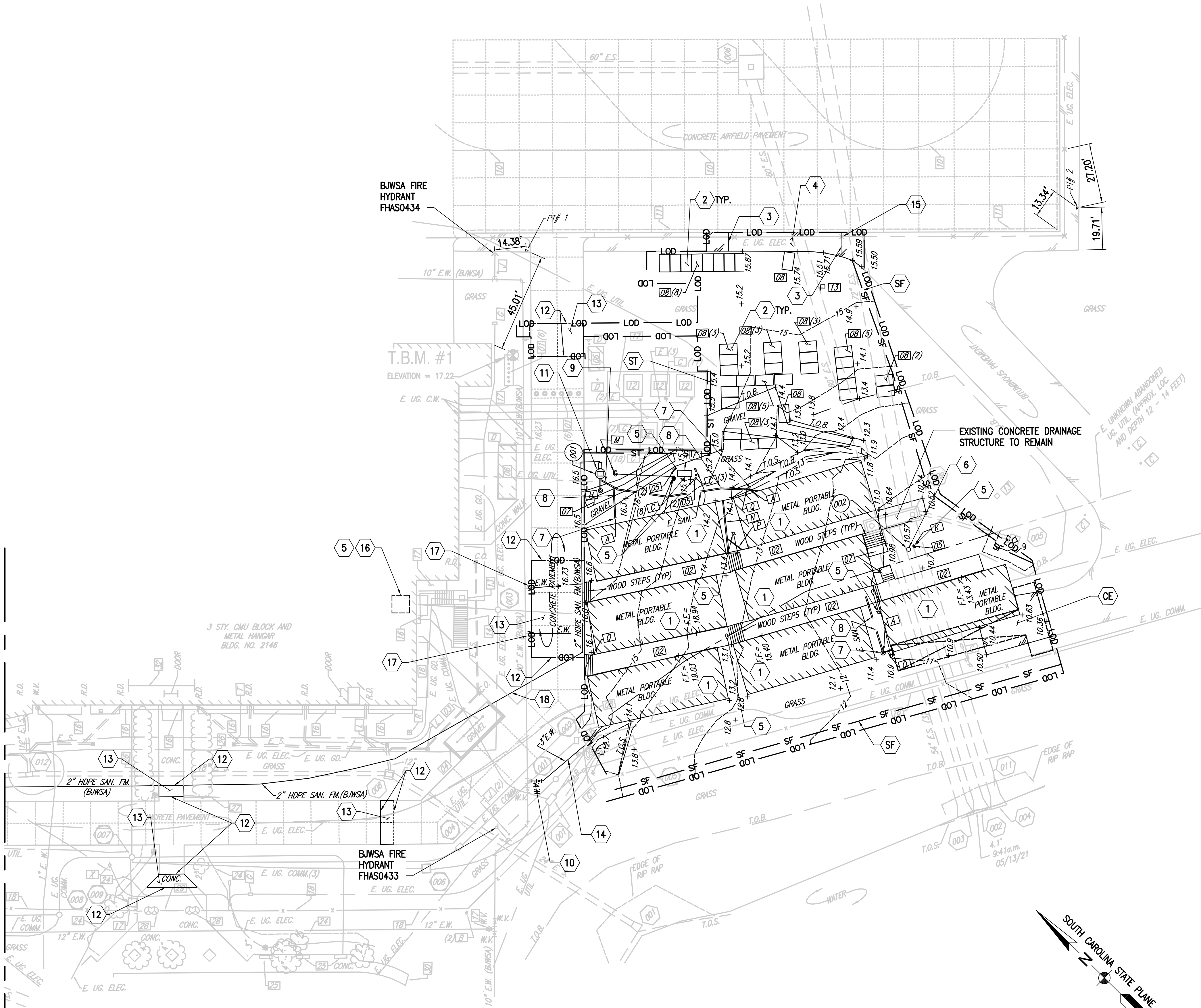
D

C

B

A

MATCHLINE SEE SHEET CD102



DEMOLITION KEY NOTES (THIS SHEET ONLY)

1. PORTABLE BUILDING AND WOOD WALKWAYS AND STEPS TO BE REMOVED BY OTHERS. REMOVE RANDOM PAVERS AT WOOD WALKWAY AREAS.
2. CARGO BOXES TO BE REMOVED BY OTHERS.
3. SAWCUT BITUMINOUS PAVEMENT.
4. REMOVE BITUMINOUS PAVEMENT.
5. REFER TO ELECTRICAL DEMOLITION DRAWINGS.
6. REMOVE WASTEWATER AND CLEAN PUMP STATION IN ACCORDANCE WITH SCDHEC REQUIREMENTS. REMOVE COMPLETELY AND DISPOSE OF WET WELL, VALVE VAULT, PIPING AND OTHER APPURTENANCES. BACKFILL.
7. REMOVE SANITARY CLEANOUT.
8. REMOVE SANITARY PIPE AND BACKFILL.
9. CUT AND PLUG PIPE.
10. CUT AND CAP PIPE, REMOVE VALVE AND VALVE BOX.
11. REMOVE WASTEWATER AND CLEAN PUMP STATION IN ACCORDANCE WITH BJWSA AND SCDHEC REQUIREMENTS. SALVAGE AND COORDINATE RETURN OF ASSETS TO BJWSA. REMOVE COMPLETELY AND DISPOSE OF WET WELL, VALVE VAULT, PIPING AND OTHER APPURTENANCES NOT SALVAGED. BACKFILL.
12. SAWCUT CONCRETE PAVEMENT.
13. REMOVE CONCRETE PAVEMENT.
14. REMOVE PIPE AND BACKFILL.
15. APRON PERIMETER LIGHTING (REFER TO ELECTRICAL DRAWINGS)
16. APPROXIMATE LOCATION OF ELECTRICAL ROOM HOUSING PANEL DP-1E SERVICING EXISTING TRAILERS.
17. CUT AND CAP PIPE. ABANDON PIPE IN PLACE.
18. ABANDON 2" HDPE SAN. F.M. (BJWSA) IN PLACE.

E & S CONTROL MEASURE KEY NOTES

- SF - SILT FENCE (REFER TO SHEET C-503/A1)
- CE - TRACKOUT CONTROL MAT CONSTRUCTION ENTRANCE (REFER TO SHEET C-502/A1)
- ST - SEDIMENT TUBE (REFER TO SHEET C-502/A4)

SHEET NOTES

1. PROTECT EXISTING UTILITIES NOT NOTED TO BE REMOVED.
2. COORDINATE WATER AND SANITARY SEWER DEMOLITION ITEMS WITH BJWSA.
3. REFER TO "EROSION CONTROL AND GRADING FOR OFFSITE UTILITY TRENCHES" NOTES ON SHEET C-501.

GRAPHIC SCALE



APPR.	DATE	DESCRIPTION	SYN.

APPROVED	A/E INFO
FOR COMMANDER NAVFAC	
ACTIVITY	
Approved by J. Scott Roberts, Asset Management Branch Head & Supervisory Facility Planner, PWD Brancher, SC-10 email	
SATISFACTORY TO	DATE 12/17/2021
DES CAB	DRW CAD
CHK ALB	ALB
PM/DMM	CJW/SVR
BRANCH MANAGER	DLB
CHIEF ENGINEER	EJA
FIRE PROTECTION	DSN

DEPARTMENT OF THE NAVY
NAVAL FACILITIES ENGINEERING SYSTEMS COMMAND
NAVAL FACILITIES ENGINEERING SYSTEMS COMMAND - MID-ATLANTIC
NORFOLK, VA
MCAS BEAUFORT
P-485 F35 OPERATIONS SUPPORT FACILITY (OSF)
BEAUFORT, SC
DEMOLITION AND EROSION CONTROL PLAN

SCALE:	GRAPHIC
PROJECT NO.:	1362850
CONSTR. CONTR. NO.	
NAVFAC DRAWING NO.	12854037
SHEET	16 OF 129
CD101	
DRAWING REVISION: 28 AUGUST 2020	

D

C

B

A

1

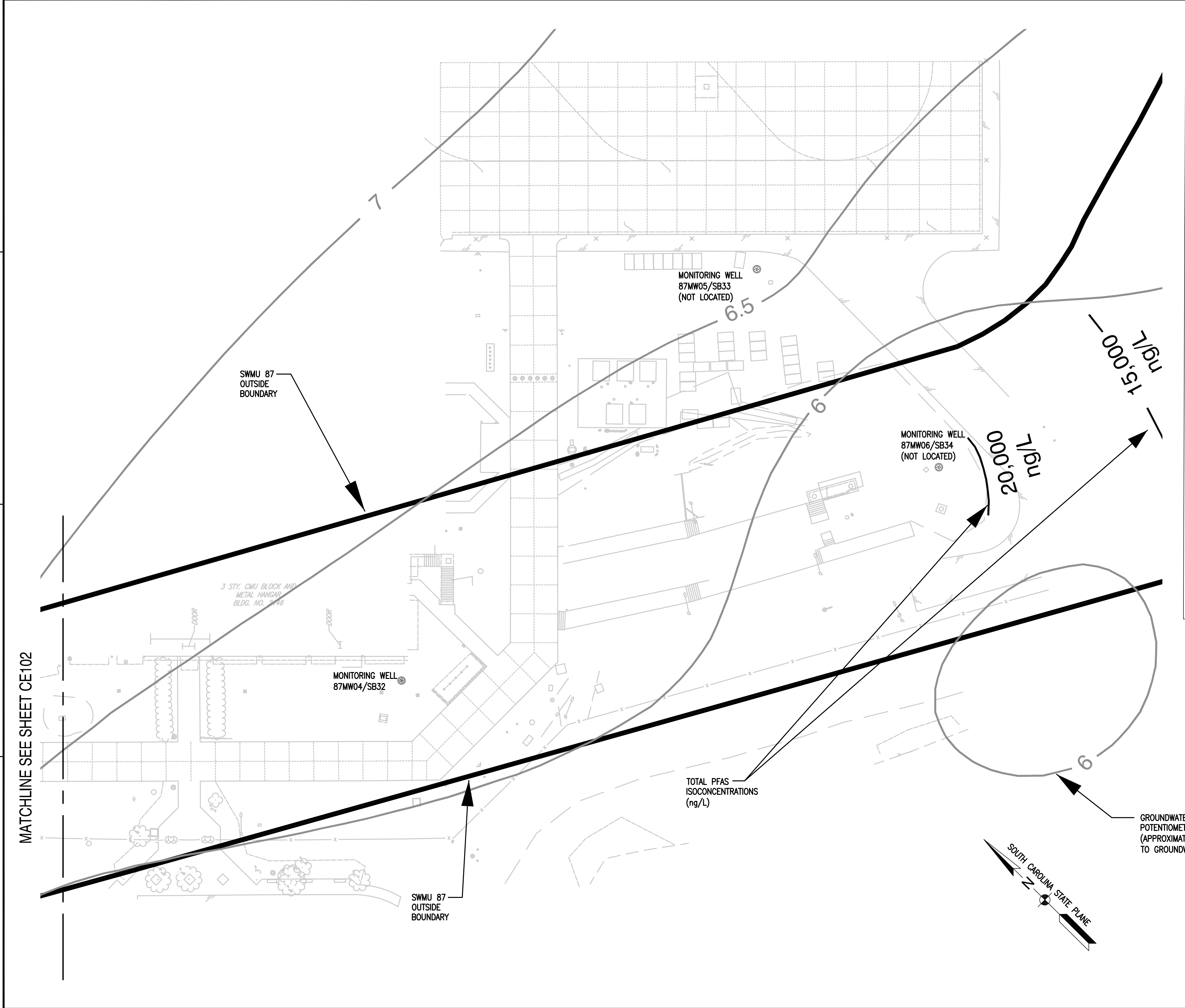
2

3

4

5

FILE NAME: K:\CAD\20040\RTA Resubmittal 02-04-22\Environmental Sheets\BUDG-P485-1362850-GEF-CE101.dwg LAYOUT NAME: CE101 PLOTTED: Thursday, February 03, 2022 - 1:21pm USER: dnc

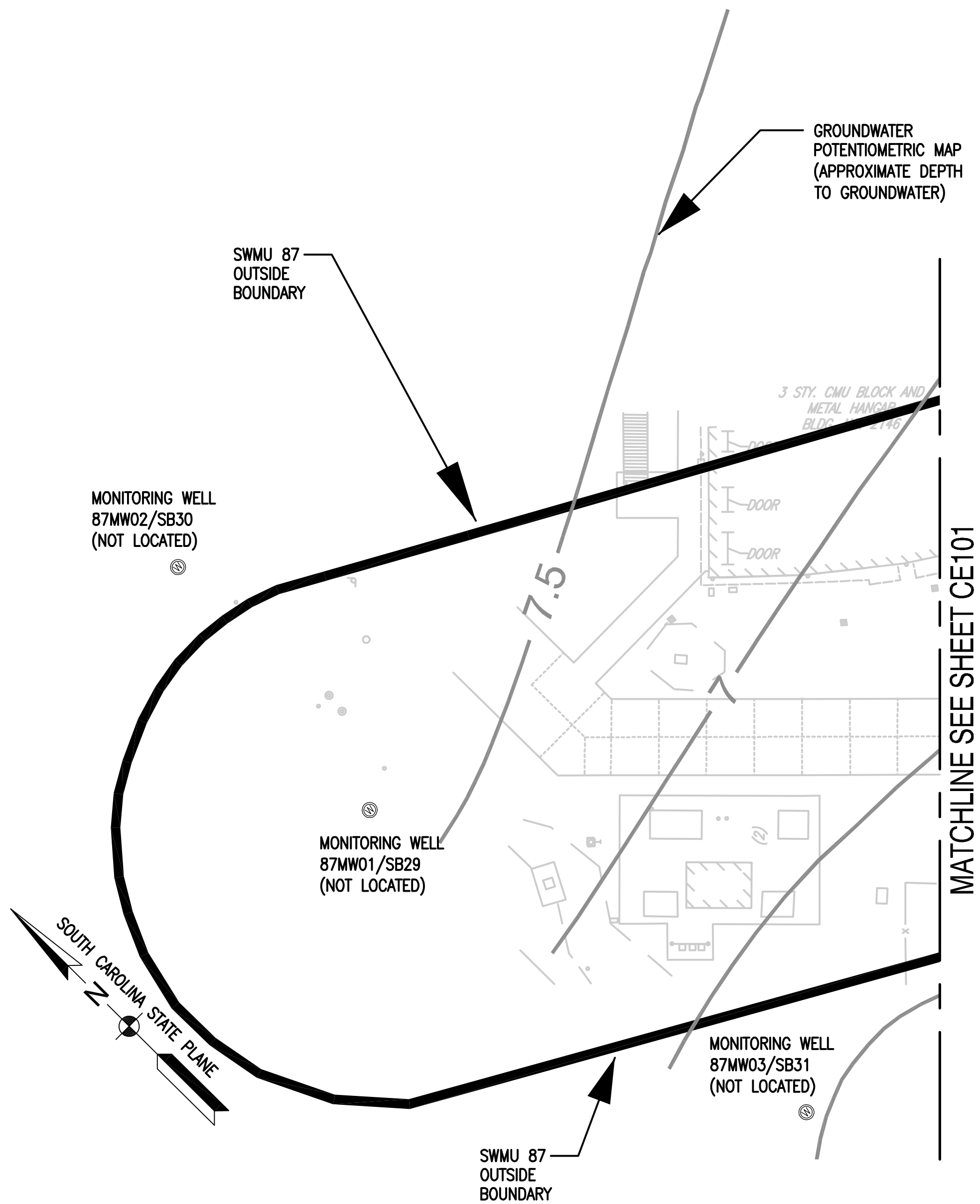


- ### SITE ENVIRONMENTAL NOTES
- COORDINATE ALL ENVIRONMENTAL WORK WITH THE MARINE CORPS AIR STATION (MCAS) BEAUFORT NATURAL RESOURCES AND ENVIRONMENTAL AFFAIRS OFFICE (NREAO) PRIOR TO WORK. ENVIRONMENTAL SUBMITTALS TO FEDERAL AND STATE AGENCIES MUST BE ROUTED THROUGH THE NREAO OFFICE FOR SUBMISSION.
 - SOLID WASTE MANAGEMENT UNIT (SWMU) 87 IS LOCATED BETWEEN THE OUTSIDE BOUNDARIES SHOWN ON THIS DRAWING.
 - THE GROUNDWATER POTENTIOMETRIC CONTOURS ARE BASED ON APPROXIMATE GROUNDWATER DEPTHS. THIS INFORMATION WAS DERIVED FROM A 2018 SAMPLING REPORT.
 - REFER TO CIVIL DEMOLITION DRAWINGS FOR COORDINATION PURPOSES.
 - REVIEW THE ENVIRONMENTAL REPORT BEFORE BEGINNING WORK. THE ENVIRONMENTAL REPORT IS LOCATED IN APPENDIX A OF THE SPECIFICATIONS. THE ENVIRONMENTAL REPORT DESCRIBES THE KNOWN CONTAMINATION ASSOCIATED WITH THE PROJECT AREA. THIS DRAWING DEPICTS THE BOUNDARY OF SWMU 87, GROUNDWATER POTENTIOMETRIC INFORMATION AND TOTAL PFAS ISOCONCENTRATIONS. THIS INFORMATION IS BASED ON CURRENT AND HISTORICAL GROUNDWATER SAMPLING.
 - VERTICAL AND HORIZONTAL GROUNDWATER MONITORING WELLS ARE LOCATED IN THE VICINITY OF THE PROPOSED CONSTRUCTION AREA. DO NOT DISTURB ANY GROUNDWATER MONITORING WELLS WITHOUT THE APPROVAL OF THE MCAS NREAO OFFICE. INSTALL SUITABLE BARRIER PROTECTION AROUND THE GROUNDWATER MONITORING WELLS TO PREVENT DAMAGE. IF ANY OF THE GROUNDWATER MONITORING WELLS MUST BE RELOCATED OR ABANDONED COMPLY WITH THE SOUTH CAROLINA DEPARTMENT OF HEALTH AND ENVIRONMENTAL CONTROL (SCDHEC) REGULATION 61-71 WELL STANDARDS. ALL GROUNDWATER MONITORING WELLS MUST HAVE SCDHEC APPROVAL PRIOR TO ABANDONMENT. A WATER WELL RECORD FORM 1903 MUST BE PROVIDED TO SCDHEC WITHIN 30 DAYS PRIOR TO ABANDONMENT. ACCORDING TO SCDHEC REGULATION 61-71 "ABANDONMENT MUST BE BY FORCED INJECTION OF GROUT OR POURING THROUGH A TREMIE PIPE STARTING AT THE BOTTOM OF THE WELL AND PROCEEDING TO THE SURFACE IN ONE CONTINUOUS OPERATION. THE WELL MUST BE FILLED WITH EITHER NEAT CEMENT, BENTONITE-CEMENT, OR 20% HIGH SOLIDS SODIUM BENTONITE GROUT, FROM THE BOTTOM OF THE WELL TO THE LAND SURFACE."
 - ASBESTOS-CONTAINING TRANSITE PIPING MAY BE ENCOUNTERED DURING EXCAVATION AND TRENCHING OPERATIONS FOR NEW FOUNDATIONS AND UTILITIES. IF SUSPECT PIPING IS UNCOVERED STOP WORK AND NOTIFY THE CONTRACTING OFFICER. ALL SUSPECT PIPING MUST BE TESTED PRIOR TO REMOVAL/DISPOSAL. ASSUME 500 LINEAR FEET OF TRANSITE PIPE WILL BE DISTURBED DURING THE PROJECT. ALL DISTURBANCE OF ASBESTOS-CONTAINING MATERIALS MUST BE PERFORMED IN ACCORDANCE WITH 29 CFR 1926.1101, 40 CFR 763, SCDHEC REGULATIONS AND MCAS NREAO AND NAVFAC ENVIRONMENTAL REQUIREMENTS.
 - MANAGE WASTE IN ACCORDANCE WITH ALL LOCAL, STATE AND FEDERAL REGULATIONS INCLUDING 40 CFR 261 AND 40 CFR 262. COMPLY WITH ALL INSTALLATION, MCAS NREAO AND NAVFAC ENVIRONMENTAL REQUIREMENTS.



NOTE:
IF THIS DRAWING IS LESS THAN 34" X 22"
IT IS A REDUCED SIZE DRAWING

APPR	DATE	DESCRIPTION	SW
APPROVED			
FOR COMMANDER NAVFAC			
ACTIVITY: Approved by J. Scott Roberts, Asset Management Branch Head & Supervisory Facility Planner, PWD Beaufort, SC via email			
SATISFACTORY TO: DATE			
DES	CAB	DRW	CAD
CHK	ALB		
BY/DM			CJW/SVR
BRANCH MANAGER		DLB	
CHIEF ENG/ARCH		EJA	
FIRE PROTECTION		DSN	
DEPARTMENT OF THE NAVY NAVAL FACILITIES ENGINEERING SYSTEMS COMMAND - MID-ATLANTIC NORFOLK, VA MCAS BEAUFORT P-485 F35 OPERATIONS SUPPORT FACILITY (OSF) SITE ENVIRONMENTAL PLAN			
SCALE: GRAPHIC			
EPROJECT NO.: 1362850			
CONSTR. CONTR. NO.			
NAVFAC DRAWING NO. 12854039			
SHEET 18 OF 129			
CE101			
DRAWFORM REVISION: 25 AUGUST 2020			



SITE ENVIRONMENTAL NOTES

1. COORDINATE ALL ENVIRONMENTAL WORK WITH THE MARINE CORPS AIR STATION (MCAS) BEAUFORT NATURAL RESOURCES AND ENVIRONMENTAL AFFAIRS OFFICE (NREAO) PRIOR TO WORK. ENVIRONMENTAL SUBMITTALS TO FEDERAL AND STATE AGENCIES MUST BE ROUTED THROUGH THE NREAO OFFICE FOR SUBMISSION.
2. SOLID WASTE MANAGEMENT UNIT (SWMU) 87 IS LOCATED BETWEEN THE OUTSIDE BOUNDARIES SHOWN ON THIS DRAWING.
3. THE GROUNDWATER POTENTIOMETRIC CONTOURS ARE BASED ON APPROXIMATE GROUNDWATER DEPTHS. THIS INFORMATION WAS DERIVED FROM A 2018 SAMPLING REPORT.
4. REFER TO CIVIL DEMOLITION DRAWINGS FOR COORDINATION PURPOSES.
5. REVIEW THE ENVIRONMENTAL REPORT BEFORE BEGINNING WORK. THE ENVIRONMENTAL REPORT IS LOCATED IN APPENDIX A OF THE SPECIFICATIONS. THE ENVIRONMENTAL REPORT DESCRIBES THE KNOWN CONTAMINATION ASSOCIATED WITH THE PROJECT AREA. THIS DRAWING DEPICTS THE BOUNDARY OF SWMU 87, GROUNDWATER POTENTIOMETRIC INFORMATION AND TOTAL PFAS ISOCONCENTRATIONS. THIS INFORMATION IS BASED ON CURRENT AND HISTORICAL GROUNDWATER SAMPLING.
6. VERTICAL AND HORIZONTAL GROUNDWATER MONITORING WELLS ARE LOCATED IN THE VICINITY OF THE PROPOSED CONSTRUCTION AREA. DO NOT DISTURB ANY GROUNDWATER MONITORING WELLS WITHOUT THE APPROVAL OF THE MCAS NREAO OFFICE. INSTALL SUITABLE BARRIER PROTECTION AROUND THE GROUNDWATER MONITORING WELLS TO PREVENT DAMAGE. IF ANY OF THE GROUNDWATER MONITORING WELLS MUST BE RELOCATED OR ABANDONED, COMPLY WITH THE SOUTH CAROLINA DEPARTMENT OF HEALTH AND ENVIRONMENTAL CONTROL (SCDHEC) REGULATION 61-71 WELL STANDARDS. ALL GROUNDWATER MONITORING WELLS MUST HAVE SCDHEC APPROVAL PRIOR TO ABANDONMENT. A WATER WELL RECORD FORM 1903 MUST BE PROVIDED TO SCDHEC WITHIN 30 DAYS PRIOR TO ABANDONMENT. ACCORDING TO SCDHEC REGULATION 61-71 "ABANDONMENT MUST BE BY FORCED INJECTION OF GROUT OR POURING THROUGH A TREMIE PIPE STARTING AT THE BOTTOM OF THE WELL AND PROCEEDING TO THE SURFACE IN ONE CONTINUOUS OPERATION. THE WELL MUST BE FILLED WITH EITHER NEAT CEMENT, BENTONITE-CEMENT, OR 20% HIGH SOLIDS SODIUM BENTONITE GROUT, FROM THE BOTTOM OF THE WELL TO THE LAND SURFACE."
7. ASBESTOS-CONTAINING TRANSITE PIPING MAY BE ENCOUNTERED DURING EXCAVATION AND TRENCHING OPERATIONS FOR NEW FOUNDATIONS AND UTILITIES. IF SUSPECT PIPING IS UNCOVERED STOP WORK AND NOTIFY THE CONTRACTING OFFICER. ALL SUSPECT PIPING MUST BE TESTED PRIOR TO REMOVAL/DISPOSAL. ASSUME 500 LINEAR FEET OF TRANSITE PIPE WILL BE DISTURBED DURING THE PROJECT. ALL DISTURBANCE OF ASBESTOS-CONTAINING MATERIALS MUST BE PERFORMED IN ACCORDANCE WITH 29 CFR 1926.1101, 40 CFR 763, SCDHEC REGULATIONS AND MCAS NREAO AND NAVFAC ENVIRONMENTAL REQUIREMENTS.
8. MANAGE WASTE IN ACCORDANCE WITH ALL LOCAL, STATE AND FEDERAL REGULATIONS INCLUDING 40 CFR 261 AND 40 CFR 262. COMPLY WITH ALL INSTALLATION, MCAS NREAO AND NAVFAC ENVIRONMENTAL REQUIREMENTS.



NOTE:
IF THIS DRAWING IS LESS THAN 34" X 22"
IT IS A REDUCED SIZE DRAWING

[illegible]