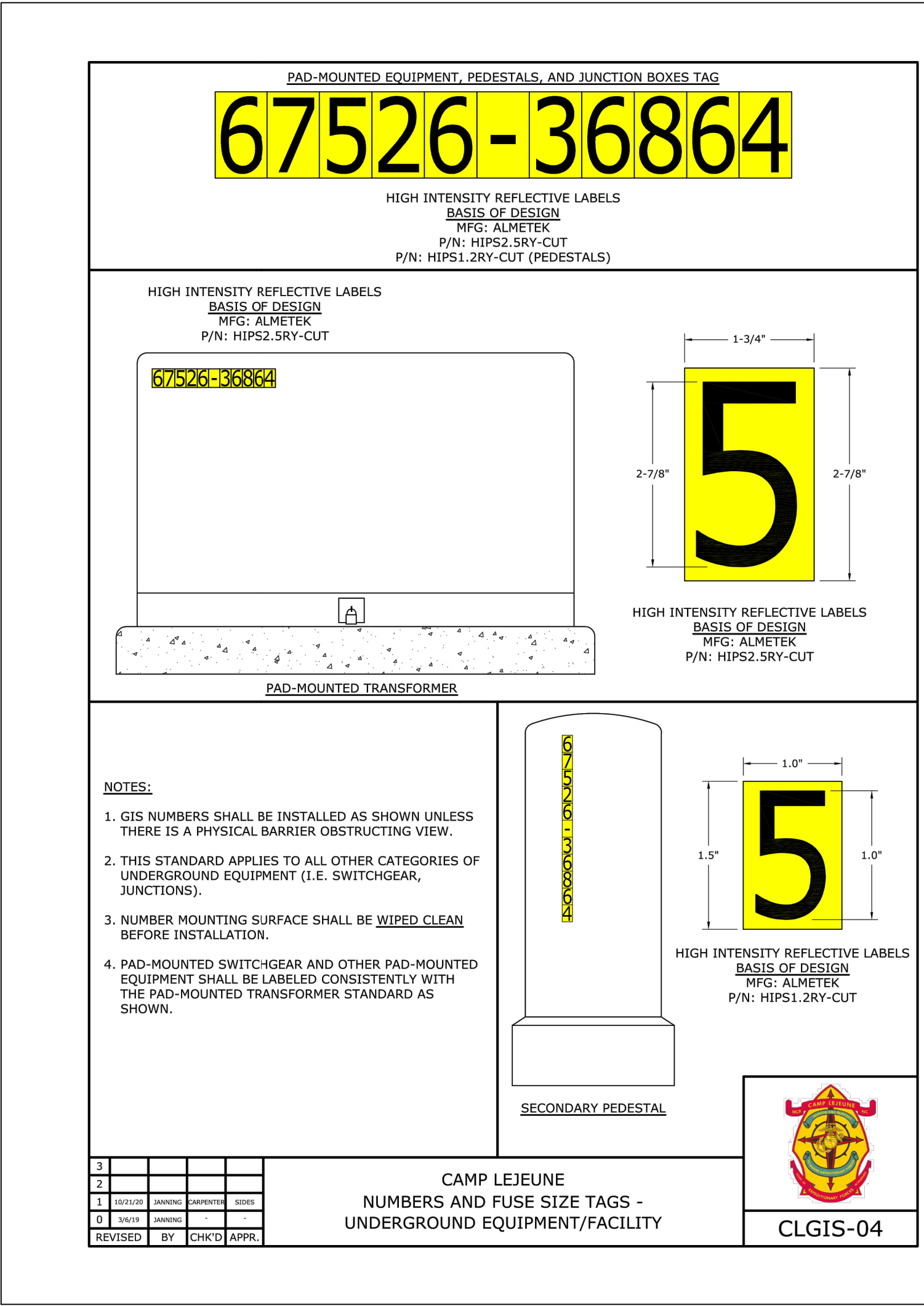
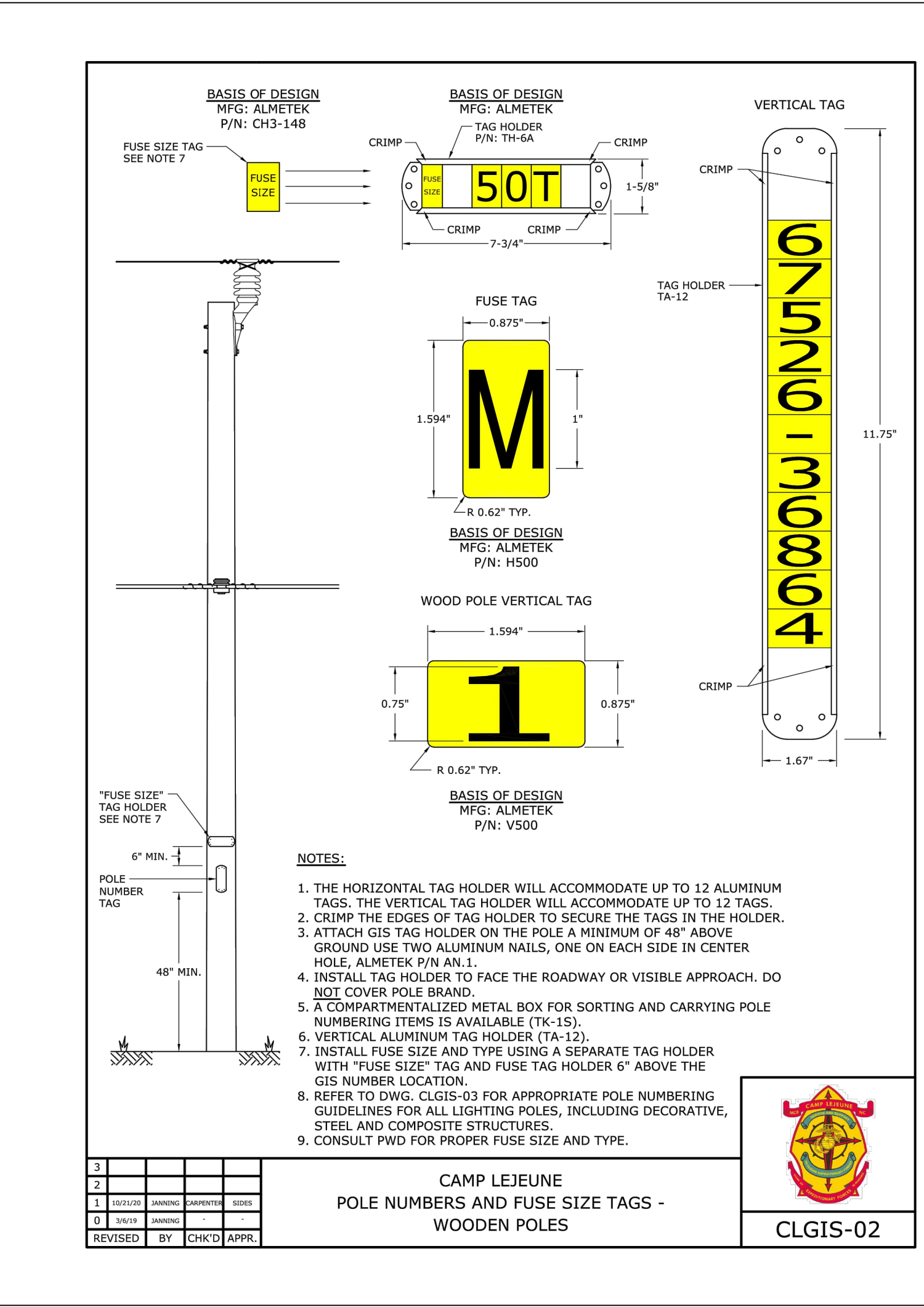
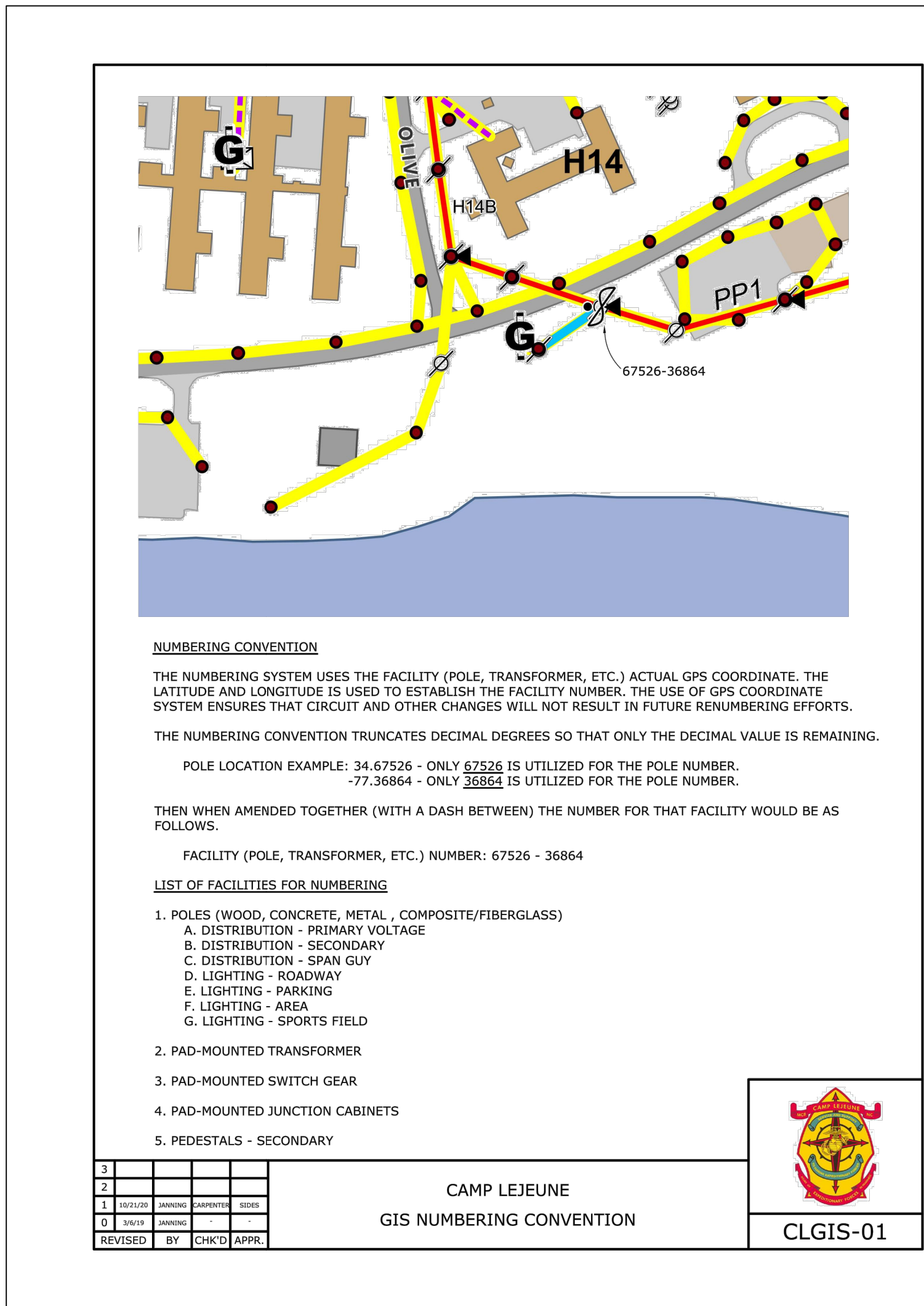
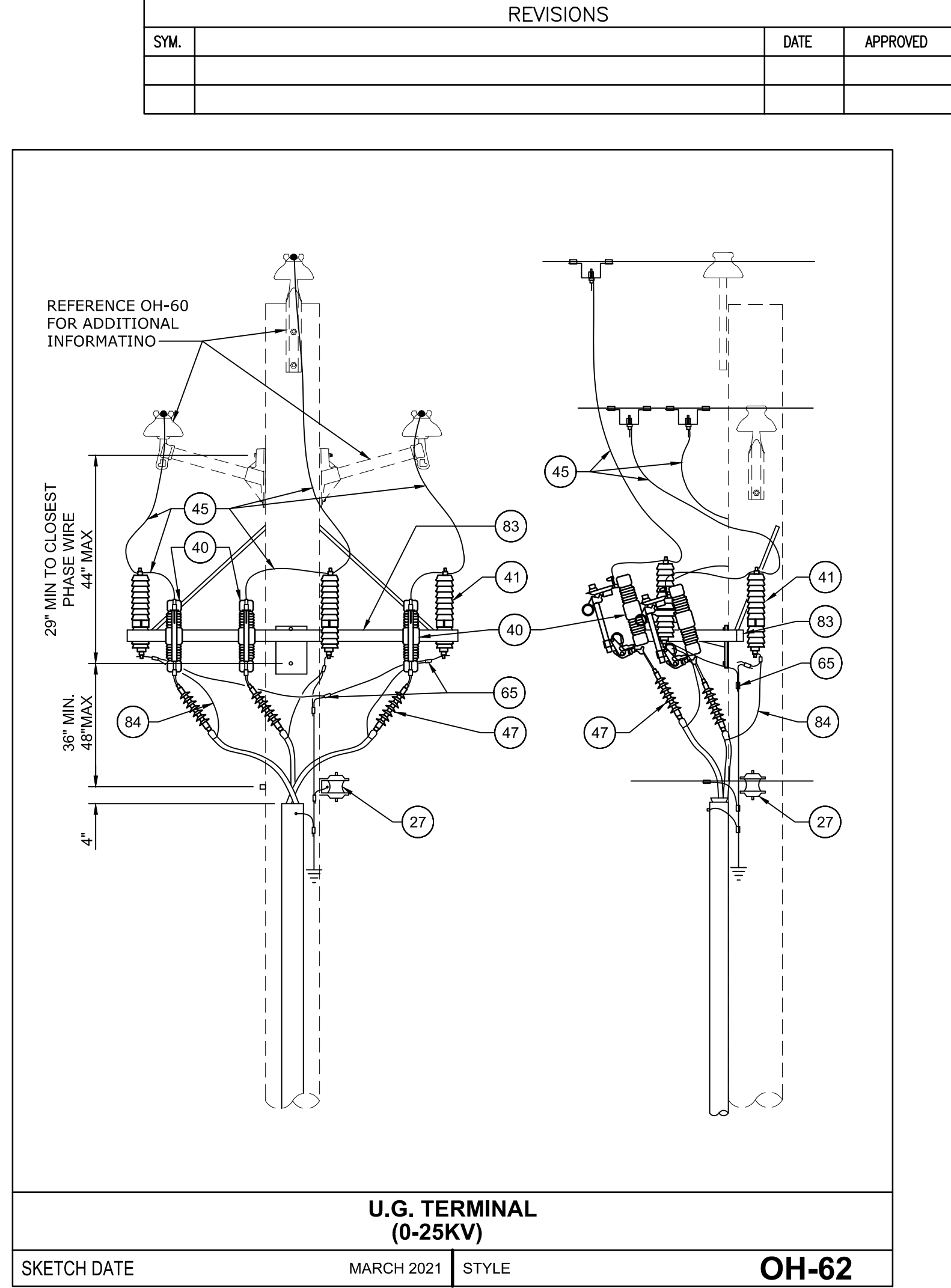
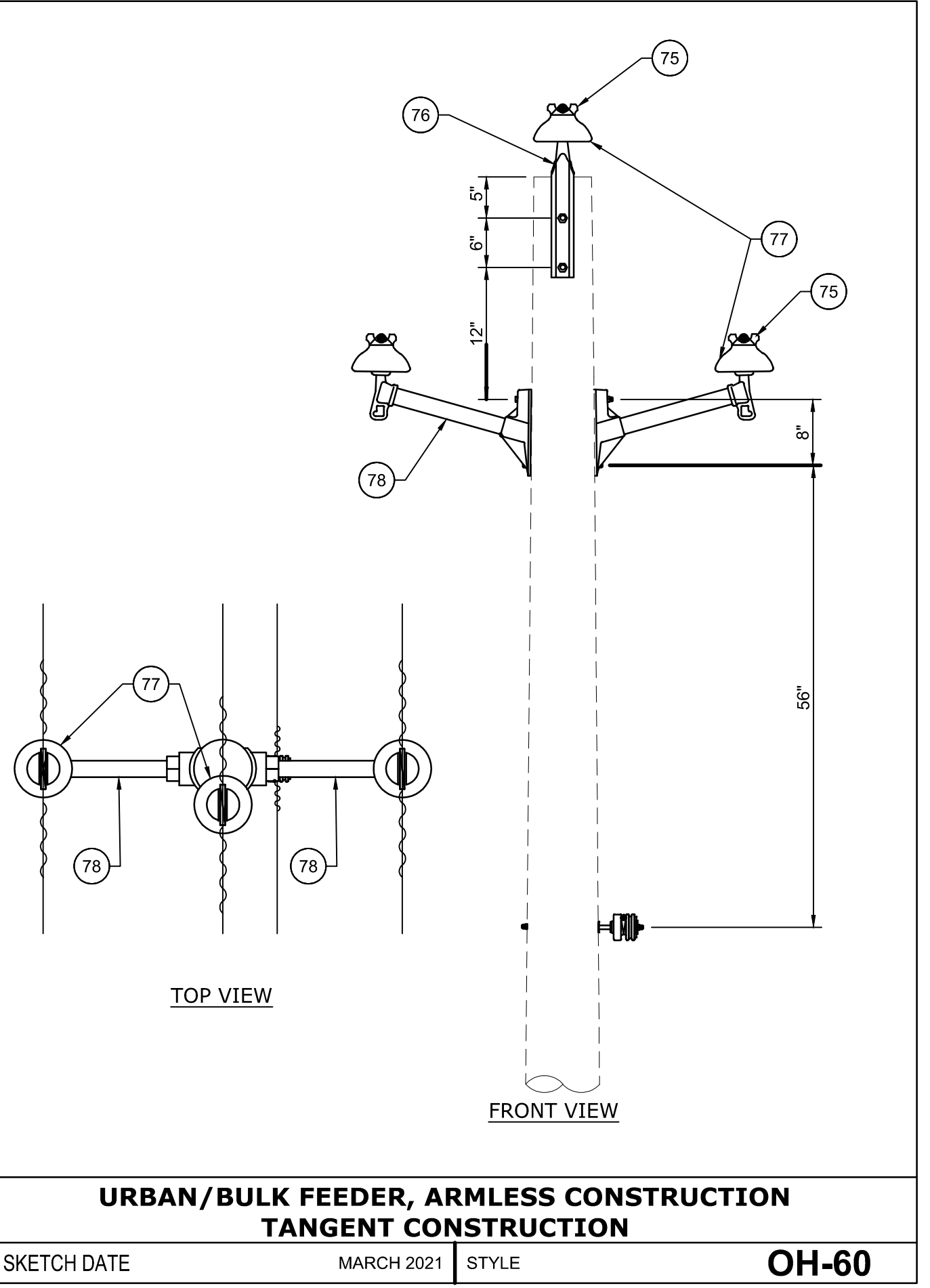
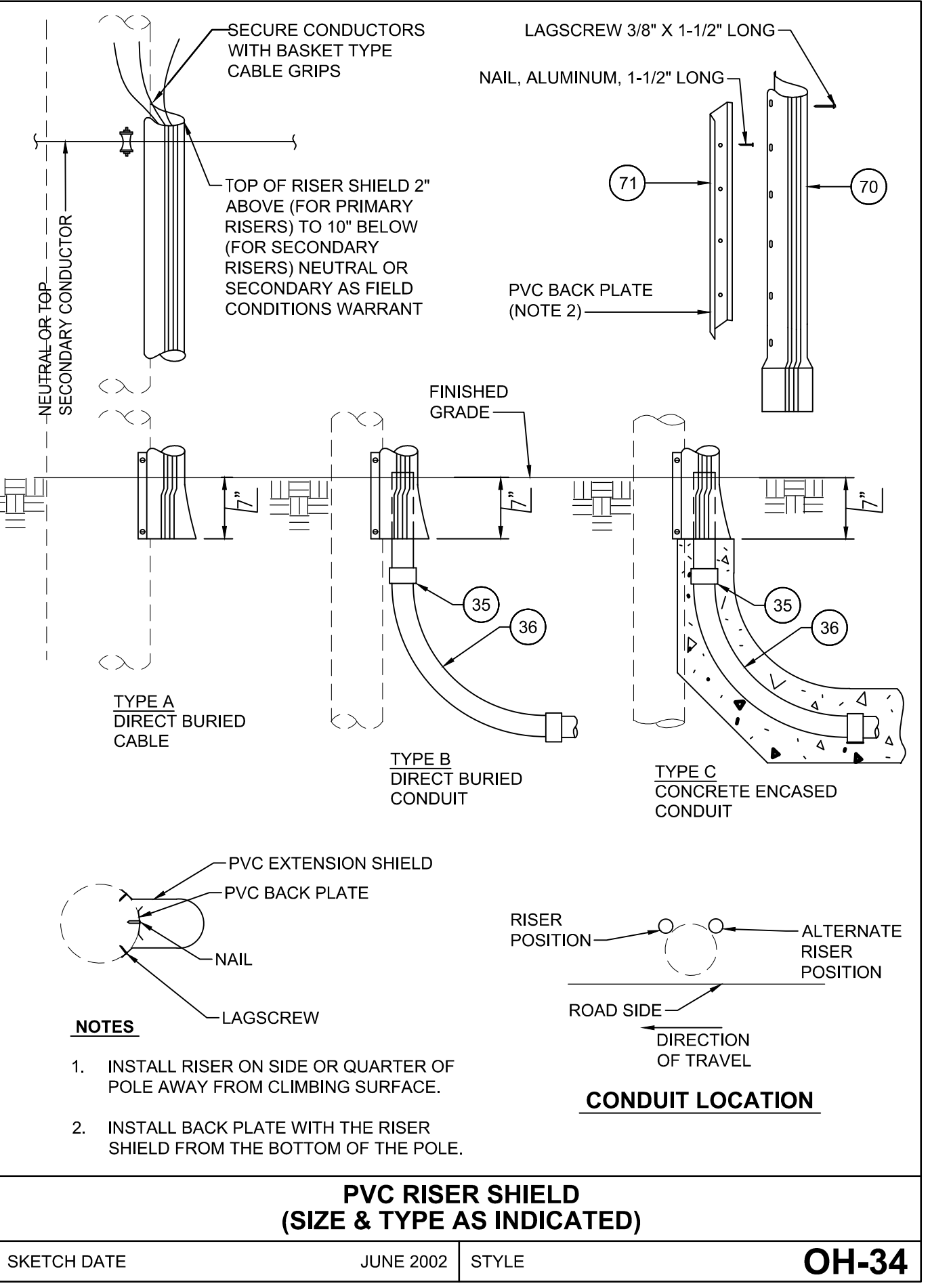


POLE LINE MATERIAL LIST			
46	TRI-MOUNT BRACKET		
47	TERMINATOR		
48	MOUNTING BRACKET		
49	CABLE GRIP HANGER		
50	HOSE CLAMP		
51	STUD, 3/4" X 1-3/4"		
52	LINE POST INSULATOR		
53	TRIPLE INSULATOR BRACKET		
54	ANGLE CLAMP		
55	INSULATOR, LINE POST CLAMP		
56	4" CROSSARM		
57	CROSSARM GAIN BRACKET		
58	PULLEY BRACKET		
59	WEDGE CLAMP		
60	MIDSPAN SERVICE CLAMP		
61	STUD, 7"		
62	SADDLE, ANGLE		
63	SADDLE CROSSARM		
64	FITTING, POLE TOP		
65	CONNECTOR		
66	SUSPENSION CLAMP		
67	TIE, SERVICE CABLE		
68	54" FIBERGLASS STRAIN INSULATOR		
69	PVC RISER SHIELD		
70	PVC EXTENSION SHIELD		
71	PVC BACK PLATE		
72	8" WOOD CROSSARM WITH CROSS SECTION DIMENSIONS OF 3 3/4" X 5 3/4"		
73	10" WOOD CROSSARM WITH CROSS SECTION DIMENSIONS OF 4 3/4" X 5 3/4"		
74	BACK-UP CURRENT LIMITING FUSE		
75	TOP TIE F NECK		
76	INSULATOR PIN POLE TOP PIN 20" STEEL		
77	INSULATOR PIN 15 KV		
78	INSULATOR BRACKET FBG POST INS BRACKET (BULLHORN) 18"		
80	INSULATOR SUPPORT EYEBOLT 5/8"X 12"		
81	CROSSARM, DEADEND, 60", STEEL		
83	ALUMINUM ARCHED CLUSTER BRACKET		
84	CABLE CONCENTRIC NEUTRAL		
POLE LINE MATERIAL LIST			
SKETCH DATE	JUNE 2002	STYLE	OH-1.5A

POLE LINE MATERIAL LIST			
1	FLAT STEEL BRACE (TWO PIECES)		
2	MACHINE BOLT, 3/8" X LENGTH NEEDED WITH WASHER, NUT AND LOCKWASHER		
3	8" WOOD CROSSARM WITH CROSS SECTION DIMENSIONS OF 3 1/2" X 4 1/2"		
4	MACHINE BOLT, 5/8" X LENGTH NEEDED WITH WASHER, NUT AND LOCKWASHER		
5	TIMBER CONNECTOR		
6	LAGSCREW, 1/2" X 4"		
7	ANGLE STEEL BRACE (TWO PIECES)		
8	MACHINE BOLT, 1/2" X LENGTH NEEDED, WITH WASHER, NUT & LOCKWASHER		
9	DEADEND BOX		
10	STEEL PIN		
11	PIN INSULATOR		
12	GRID GAIN, USED ONLY WHEN THERE IS NO POLE GAIN		
13	ANGLE STEEL BRACE (ONE PIECE)		
14	10" WOOD CROSSARM WITH CROSS SECTION DIMENSIONS OF 3 1/2" X 4 1/2"		
15	5/8" EYE NUT		
16	5/8" EYE BOLT, LENGTH AS NEEDED, WITH WASHER, NUT & LOCKWASHER		
17	EXTENSION LINK		
18	BELL TYPE SUSPENSION INSULATOR WITH CONNECTING HARDWARE		
19	STRAIN CLAMP		
20	STEEL ANGLE PIN		
21	CLUSTER MOUNTING BRACKET, STEEL		
22	TRANSFORMER GROUNDING CONNECTION		
23	STIRRUP		
24	SECONDARY LEAD SUPPORT BRACKET		
25	ADAPTER PLATE FOR CLUSTER MOUNTING		
26	CLEVIS BRACKET FOR SPOOL INSULATOR		
27	SPOOL INSULATOR		
28	U BOLT CLAMP		
29	PREFORMED GUY GRIP		
30	GUY HOOK		
31	GUY STRAIN INSULATOR		
32	GUY WIRE, SIZE AS SPECIFIED		
33	#4 WP CU, SOFT DRAWN GROUND WIRE		
34	GROUND CLAMP		
35	CONDUIT COUPLING		
36	CONDUIT BEND		
37	INSULATED BUSHING		
38	PERFORATED STRAPPING, 1-1/2" WIDE		
39	HOT LINE CLAMP		
40	FUSED CUTOFF, AS SPECIFIED		
41	SURGE ARRESTER, AS SPECIFIED		
42	POLE TOP PIN (RIDGE PIN) - 24 INCHES LONG		
43	CROSSARM ANGLE PIN		
48	ANGLE POLE TOP PIN		
45	WEATHERPROOF SOFT DRAWN WIRE-SIZE (9)TO MATCH OR EXCEED AMPACITY OF CONNECTING CABLE, OR (10)AT 125% OF TRANSFORMER FULL LOAD CURRENT, BUT NOT LESS THAN NO. 4 AWG		
POLE LINE MATERIAL LIST			
SKETCH DATE	JUNE 2002	STYLE	OH-1.5



SEE DISCLOSURE OF INFORMATION STATEMENT ON SHEET G-1

CBHF Engineers, PLLC 2246 Yaupon Drive Wilmington, NC 28401 Phone: 910.791.4000 Fax: 910.791.5286 www.cbhfenr.com	SHEET TITLE:		MDM POLE DETAILS		E-7
	DES. MDM		MARINE CORPS BASE CAMP LEJEUNE, NORTH CAROLINA		
	DR. MDM		CONSTRUCT MARSOC G-6 SUPPORT FACILITY CAMP LEJEUNE, NORTH CAROLINA		
	CHK. WAC				
	SUBMITTED BY:				
	DESIGN DIR. T.H. BURTON, PE				
APPROVED:		DATE	SIZE	CODE IDENT. NO.	NAVFAC DRAWING NO.
SATISFACTORY TO:		DATE	F	80091	60035480
		SCALE: NOTED	SPEC. 05-21-0010	SHEET 40 OF 43	

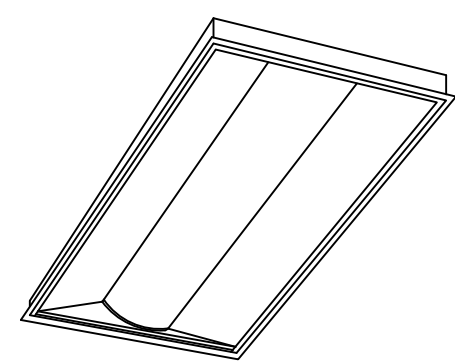
REVISIONS			
SYN.		DATE	APPROVED



LUMINAIRE REQUIREMENTS:

- HOUSING - DIE-CAST ALUMINUM FRAME AND HEAT SINK WITH SILVER OR WHITE ENAMELED FINISH, APPROXIMATELY 1 FT x 4 FT. LENGTH PER SHCHEDULE
- LENS - IMPACT-RESISTANT ACRYLIC.
- LIGHT SOURCE - SOLID STATE LEDS WITH MINIMUM 50K HOURS RATED LIFE AT L70, 3500K CCT UON, MINIMUM 80 CRI, MAXIMUM 4-STEP MCADAM ELLIPSE BINNING TOLERANCE FOR COLOR CONSISTENCY, AND MINIMUM EFFICACY OF 75 LUMENS/WATT. INITIAL LUMEN OUTPUT AS INDICATED IN LUMINAIRE SCHEDULE. UP AND DOWN LIGHT OUTPUT PER SCHEDULE.
- DRIVER - REMOTELY-LOCATED ABOUT CEILING, REPLACEABLE, HIGH-EFFICIENCY DRIVER WITH MINIMUM 0.9 PF, OPERATING VOLTAGE OF 120-277V, THERMAL MANAGEMENT, < 20% TOTAL HARMONIC DISTORTION. ON-OFF CONTROL, STEP-DIMMABLE OR FULLY DIMMABLE AS INDICATED.
- CERTIFICATION - UL 1598, DLC QUALIFIED, AND ROHS COMPLIANT. COMPLIES WITH LM79, LM80 AND TM21 TESTING STANDARDS.
- MOUNTING - SUSPENDED FROM HARD OR ACOUSTICAL TILE CEILING.
- OPTIONS - 0-10V OR DALI SYSTEM DIMMING.
- THIS SKETCH IS A NON-PROPRIETARY GRAPHIC REPRESENTATION OF A LUMINAIRE THAT MAY MEET THE SPECIFICATION REQUIREMENTS. IT IS NOT INTENDED TO INDICATE A CERTAIN MANUFACTURER OR PREFERENCE.

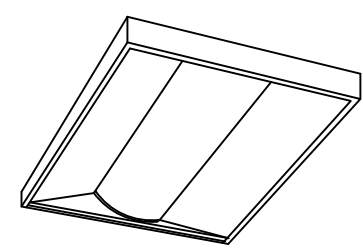
LED LINEAR PENDANT



LUMINAIRE REQUIREMENTS:

- CONSTRUCTION - COMPONENTS ARE DIE-FORMED FOR DIMENSIONAL CONSISTENCY AND PAINTED AFTER FABRICATION WITH A POLYESTER POWDER PAINT FOR IMPROVED PERFORMANCE AND PROTECTION. THE REFLECTOR IS FINISHED WITH A HIGH REFLECTIVE MATTE WHITE POWDER PAINT FOR IMPROVED AESTHETICS AND INCREASED LIGHT DIFFUSION. DIFFUSERS ARE EXTRUDED FROM IMPACT MODIFIED ACRYLIC FOR INCREASED DURABILITY. LED BOARDS AND DRIVERS ARE ACCESSIBLE FROM THE PLENUM.
- OPTICS - VOLUMETRIC ILLUMINATION IS ACHIEVED BY CREATING AN OPTIMAL MIX OF LIGHT TO WALLS, PARTITIONS AND VERTICAL AND HORIZONTAL WORK SURFACES - RENDERING THE INTERIOR SPACE, OBJECTS AND OCCUPANTS IN A MORE BALANCED, COMPLIMENTARY LUMINOUS ENVIRONMENT. HIGH PERFORMANCE EXTRUDED ACRYLIC DIFFUSERS CONCEAL LEDS AND EFFERENTLY DELIVER LIGHT IN A VOLUMETRIC DISTRIBUTION. FOUR DIFFUSER CHOICES AVAILABLE - CURVED AND SQUARE DESIGNS WITH LINEAR PRISMS OR A SMOOTH FROSTED FINISH.
- ELECTRICAL - LONG-LIFE LEDS, COUPLED WITH HIGH-EFFICIENCY DRIVERS, PROVIDE SUPERIOR QUANTITY AND QUALITY OF ILLUMINATION FOR EXTENDED SERVICE LIFE. FIXTURE SHALL BE RATED TO DELIVER L80 PERFORMANCE FOR 50,000 HOURS.
- LED DRIVER - DRIVER DELIVERS FULL RANGE DIMMING FROM 0 - 10V CONTROL SIGNAL.
- INSTALLATION - GRID INTERFACING ARRANGEMENT PROVIDES MOUNTING INTO STADARD 1" AND 8"16" TEE BAR OR SCREW SLOT GRIDS. 8"16" ALLOWS FIXTURE TRIM TO HANG LEVEL WITH ARCHITECTURAL CEILING TILES. DRYWALL CEILING ADAPTORS AVAILABLE. SUITABLE FOR DAMP LOCATION.
- LISTINGS - CSA CERTIFIED TO MEET US AND CANADIAN STANDARDS. PATENTS PENDING. DLC CERTIFIED TEST TO LM80 STANDARDS.
- SEE SCHEDULE FOR DELIVERED LUMEN PACKAGE, 4000K

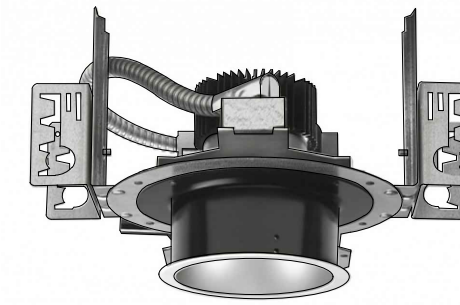
DIRECT/INDIRECT RECESSED 2' X 4' LED



LUMINAIRE REQUIREMENTS:

- CONSTRUCTION - COMPONENTS ARE DIE-FORMED FOR DIMENSIONAL CONSISTENCY AND PAINTED AFTER FABRICATION WITH A POLYESTER POWDER PAINT FOR IMPROVED PERFORMANCE AND PROTECTION. THE REFLECTOR IS FINISHED WITH A HIGH REFLECTIVE MATTE WHITE POWDER PAINT FOR IMPROVED AESTHETICS AND INCREASED LIGHT DIFFUSION. DIFFUSERS ARE EXTRUDED FROM IMPACT MODIFIED ACRYLIC FOR INCREASED DURABILITY. LED BOARDS AND DRIVERS ARE ACCESSIBLE FROM THE PLENUM.
- OPTICS - VOLUMETRIC ILLUMINATION IS ACHIEVED BY CREATING AN OPTIMAL MIX OF LIGHT TO WALLS, PARTITIONS AND VERTICAL AND HORIZONTAL WORK SURFACES - RENDERING THE INTERIOR SPACE, OBJECTS AND OCCUPANTS IN A MORE BALANCED, COMPLIMENTARY LUMINOUS ENVIRONMENT. HIGH PERFORMANCE EXTRUDED ACRYLIC DIFFUSERS CONCEAL LEDS AND EFFERENTLY DELIVER LIGHT IN A VOLUMETRIC DISTRIBUTION. FOUR DIFFUSER CHOICES AVAILABLE - CURVED AND SQUARE DESIGNS WITH LINEAR PRISMS OR A SMOOTH FROSTED FINISH.
- ELECTRICAL - LONG-LIFE LEDS, COUPLED WITH HIGH-EFFICIENCY DRIVERS, PROVIDE SUPERIOR QUANTITY AND QUALITY OF ILLUMINATION FOR EXTENDED SERVICE LIFE. FIXTURE SHALL BE RATED TO DELIVER L80 PERFORMANCE FOR 50,000 HOURS.
- LED DRIVER - DRIVER DELIVERS FULL RANGE DIMMING FROM 0 - 10V CONTROL SIGNAL.
- INSTALLATION - GRID INTERFACING ARRANGEMENT PROVIDES MOUNTING INTO STADARD 1" AND 8"16" TEE BAR OR SCREW SLOT GRIDS. 8"16" ALLOWS FIXTURE TRIM TO HANG LEVEL WITH ARCHITECTURAL CEILING TILES. DRYWALL CEILING ADAPTORS AVAILABLE. SUITABLE FOR DAMP LOCATION.
- LISTINGS - CSA CERTIFIED TO MEET US AND CANADIAN STANDARDS. PATENTS PENDING. DLC CERTIFIED TEST TO LM80 STANDARDS.
- SEE SCHEDULE FOR DELIVERED LUMEN PACKAGE, 4000K

DIRECT/INDIRECT SURFACE 2' X 2' LED



LUMINAIRE REQUIREMENTS:

- HOUSING - DIE-FORMED, COLD-ROLLED STEEL, OR FORGED ALUMINUM WITH HEAT SINK. DRIVER MUST BE ACCESSIBLE FROM BOTTOM OF LUMINAIRE. PROVIDE T-BAR HANGERS FOR INSTALLATION IN ACOUSTICAL TILE CEILINGS OR TABS WHEN MOUNTING IN HARD CEILINGS.
- REFLECTOR AND TRIM - SPECIFICATION GRADE, LOW IRRIDESCENT, SPECULAR ALUMINUM REFLECTOR WITH METALLIC OR PAINTED TRIM RING..
- LIGHT SOURCE - SOLID STATE LEDS WITH MINIMUM 50K HOURS RATED LIFE AT L70, 3500K CCT UON, MINIMUM 80 CRI, MAXIMUM 4-STEP MCADAM ELLIPSE BINNING TOLERANCE FOR COLOR CONSISTENCY, AND MINIMUM EFFICACY OF 90 LUMENS/WATT. INITIAL LUMEN OUTPUT AS INDICATED IN LUMINAIRE SCHEDULE.
- DRIVER - REPLACEABLE, INTEGRAL, HIGH-EFFICIENCY DRIVER WITH MINIMUM 0.9 PF, OPERATING VOLTAGE OF 120-277V, THERMAL MANAGEMENT, < 20% TOTAL HARMONIC DISTORTION. ON-OFF CONTROL, STEP-DIMMABLE OR FULLY DIMMABLE AS INDICATED.
- CERTIFICATION - UL 1598, DAMP LOCATION, DLC QUALIFIED, AND ROHS COMPLIANT. COMPLIES WITH LM79, LM80 AND TM21 TESTING STANDARDS. UL 924 WHEN EQUIPPED WITH EMERGENCY BATTERY BACK-UP.
- MOUNTING - RECESSED IN HARD OR ACOUSTICAL TILE CEILING.
- OPTIONS - EMERGENCY BATTERY BACK-UP, WALL-WASH TRIM, IC RATED FOR DIRECT CONTACT WITH INSULATION, VARIOUS APERTURE DIAMETERS, AND VARIOUS GLASS LENSES.
- THIS SKETCH IS A NON-PROPRIETARY GRAPHIC REPRESENTATION OF A LUMINAIRE THAT MAY MEET THE SPECIFICATION REQUIREMENTS. IT IS NOT INTENDED TO INDICATE A CERTAIN MANUFACTURER OR PREFERENCE.

LED RECESSED DOWNLIGHT

REVISED:

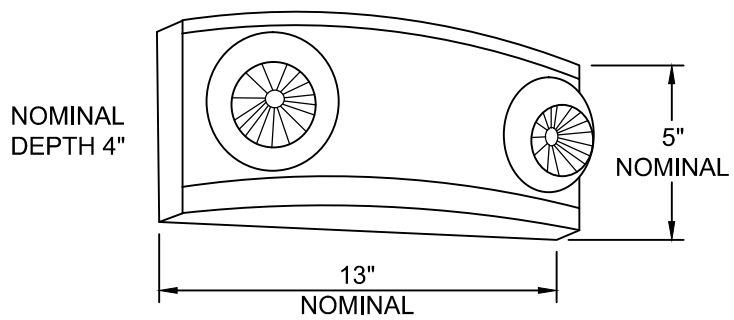
APRIL 2016

LIGHTING PLATE:

NL-19

1 TYPE A & G DETAIL

NOT TO SCALE



LUMINEAR REQUIREMENTS:

- HOUSING - UV STABLE, FLAME-RATED, HIGH-IMPACT THERMOPLASTIC IN WHITE OR BLACK TEXTURED FINISH.
- INTERNAL COMPONENTS - FULLY AUTOMATIC, SOLID STATE, CONSTANT VOLTAGE, CURRENT-LIMITED BATTERY CHARGER; MAINTENANCE-FREE LEAD-ACID BATTERY; AND BUILT-IN OVERLOAD AND LOW-VOLTAGE BATTERY PROTECTION.
- EXTERIOR HOUSING INDICATORS - LED AC-ON INDICATOR AND INTEGRAL TEST SWITCH.
- LAMP HEADS - UV STABLE, FLAME RATED POLYCARBONATE THERMOPLASTIC. MR16 HALOGEN LAMPS SHALL BE 5 WATTS, HIGH-OUTPUT OR AS INDICATED IN LIGHTING FIXTURE SCHEDULE. MOUNTING - DIRECTLY TO 4" OCTAGONAL OR SQUARE OUTLET BOX.
- CERTIFICATION - UL LISTED AND LABELED, COMPLIES WITH UL 924 AND NFPA 101 REQUIREMENTS. LISTED FOR DAMP LOCATIONS.
- OPTIONS - VOLT-METER, VANDEL-RESISTANT SHIELD, SELF-DIAGNOSTIC/TESTING ELECTRONICS AND WIRE GUARD.

DECORATIVE EMERGENCY LIGHTING UNIT

REVISED:

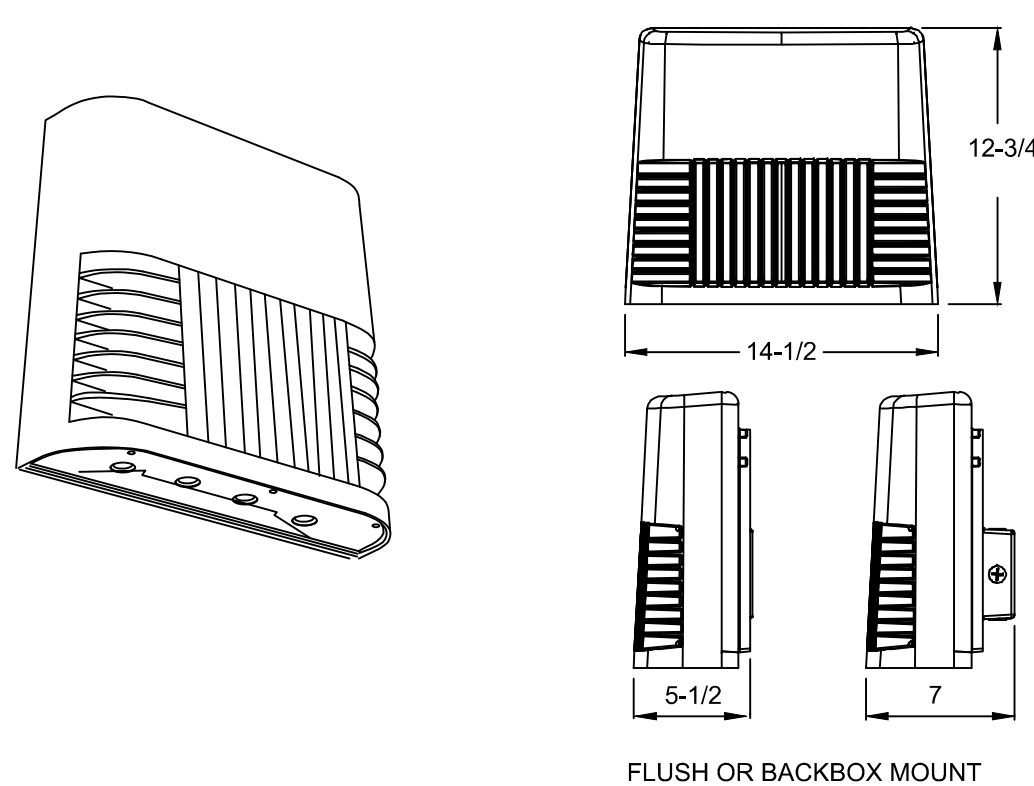
AUGUST 2004

LIGHTING PLATE:

NL-67

2 TYPE B DETAIL

NOT TO SCALE



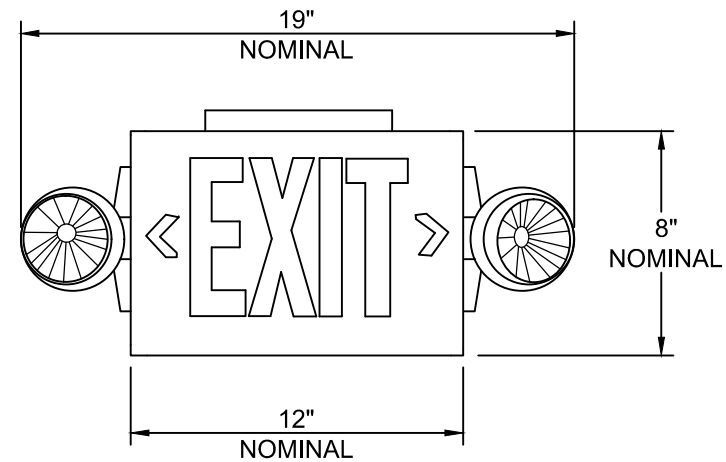
LUMINAIRE REQUIREMENTS:

- HOUSING - CAST ALUMINUM HOUSING.
- FINISH - THERMOSET POWDER COAT FINISH.
- LENS - CLEAR GLASS.
- LAMPS - LEDS.
- DRIVER - ELECTRONIC >90% POWER FACTOR.
- ELECTRICAL - 120/277V
- CERTIFICATION - UL LISTED AND LABELED.
- INTEGRAL PHOTOCCELL

LED EXTERIOR / EGRESS SURFACE FIXTURE

3 TYPE C DETAIL

NOT TO SCALE



LUMINARIE REQUIREMENTS:

- THERMOPLASTIC HOUSING, IMPACT-RESISTANT, SCRATCH-RESISTANT AND CORROSION-PROOF. UL94V-0 FLAME RATING. UV-STABLE RESIN. RUGGED UNIBODY HOUSING SNAPS TOGETHER WITH NO ADDITIONAL FASTENERS. UNIVERSAL, DIRECTIONAL CHEVRON INSERTS ARE EASILY REMOVED AND REINSERTED. LETTERS ARE 6" HIGH WITH 3/4" STROKE, WITH 100 FT. VIEWING DISTANCE RATING BASED UPON UL924 STANDARD. LEDS MOUNTED ON PRIMARY CIRCUIT BOARDS FOR SIGNILLUMINATION. LOW-ENERGY LED AMP IN SIGN OPERATES IN NORMAL (AC INPUT) AND EMERGENCY (DC INPUT) MODES. LOW-PROFILE, INTEGRATED TEST SWITCH/PILOT LIGHT. RED STATUS INDICATOR. UNIQUE TRACK-AND-SWIVEL ARRANGEMENT PERMITS FULL RANGE OF DIRECTION OF LAMP HEAD ADJUSTMENT. TOOL-LESS ACCESS FOR MAINTENANCE.
- OPTICS - TWIN LED LAMP HEADS OPERATE IN EMERGENCY (DC INPUT) MODE WITH 12 SERIES-PARALLEL WHITE LEDS IN EACH HEAD.
- ELECTRICAL - DUAL-VOLTAGE INPUT CAPABILITY (120/277V), CURRENT-LIMITING CHARGER, SHORT-CIRCUIT PROTECTION, SINGLE MULT-COLOR LED INDICATOR TO DISPLAY TWO-STATE CHARGING, TEST ACTIVATION AND THREE-STATE DIAGNOSTIC TEST. TEST SWITCH. SELF-DIAGNOSTIC TESTING FOR 30 SECONDS EVERY 30 DAYS, 30 MINUTES AT 180-DAY INTERVAL, AND 90 MINUTES ANNUALLY. DIAGNOSTIC EVALUATION OF LED LIGHT SOURCE, AC-TO-DC TRANSFER, CHARGING AND BATTERY CONDITION. BATTERY: SEALED, MAINTENANCE-FREE NICKEL-CADMIUM BATTERY. DELIVERS 90-MINUTE CAPACITY TO EMERGENCY LAMPS. INSTALLATION - TOP, END OR BACK MOUNTING. HOUSING SNAPS TO CANOPY WITH POSITIVE-LOCKING TABS. CAM LOCKING PIN SECURES HOUSING TO CANOPY.
- LISTINGS - UL DAMP LOCATION LISTED STANDARD 50"-104"F (10"-40"C), MEETS UL 924, NFPA 101 (CURRENT LIFE SAFETY CODE), NEC AND OSHA ILLUMINATION STANDARDS.

LED COMBO/EXIT SIGN

LIGHTING FIXTURE SCHEDULE

MARK	DESCRIPTION	NOM. SIZE	TEMP(°K)	LAMPS	VOLTS	DELIVERED LUMENS	WATTS	LENS	COLOR	MOUNTING HEIGHT	BALLAST/ DRIVER	REMARKS
A	LINEAR LED STRIP LIGHT 20% UPLIGHT / 80% DOWNLIGHT	8' x 8 1/4" x 1 3/4"	3500	LED	UNIV	7,352	88	N/A	WHITE	8'-0" AFF	LED DRIVER	
B	DIRECT / INDIRECT RECESSED MOUNTED LED FIXTURE	2'x4'	3500	LEDs	120	4,377	40.6	N/A	WHITE	RECESSED CEILING	LED DRIVER	5
C	DIRECT / INDIRECT SURFACE MOUNTED LED FIXTURE	2' x 2'	3500	LED	MVOLT	3,340	35.9	ACRYLIC	WHITE	CEILING SURFACE	LED DRIVER	
D	RECESSED SHOWER FIXTURE	4" DIA	3500	LED	MVOLT	1,000	11		WHITE	RECESSED CEILING	LED DRIVER	3
E	EMERGENCY LIGHTING UNIT WITH 90 MINUTE EMERGENCY BATTERY BACKUP, WET LOCATION	15"x4"x6"	N/A	LEDS	120	N/A	5	N/A	WHITE	8'-6" AFF		3,6
F	WALL MOUNTED EMERGENCY FIXTURE WITH 90 MINUTE EM. BATTERY, FULL CUT OFF	7.5"x 11"x 3"	N/A	LEDs	120	700 NORMAL 500 EM	24	N/A	WHITE	WALL MTD 12" ABOVE DOOR	LED DRIVER	3,5,6,7
G	LINEAR LED STRIP LIGHT 20% UPLIGHT / 80% DOWNLIGHT	4' x 8 1/4" x 1 3/4"	3500	LED	UNIV	3,676	44	N/A	WHITE	8'-0" AFF	LED DRIVER	
X	COMBINATION EXIT SIGN AND LIGHTING UNIT WITH 90 MINUTE EMERGENCY BATTERY	19"x8"	N/A	LEDS	120	N/A	5	N/A	WHITE	REFER TO DETAIL 1/E-1		6

REMARKS:

1. 9H-LEVEL SWITCHING

2. DAMP LOCATION

3. WET LOCATION

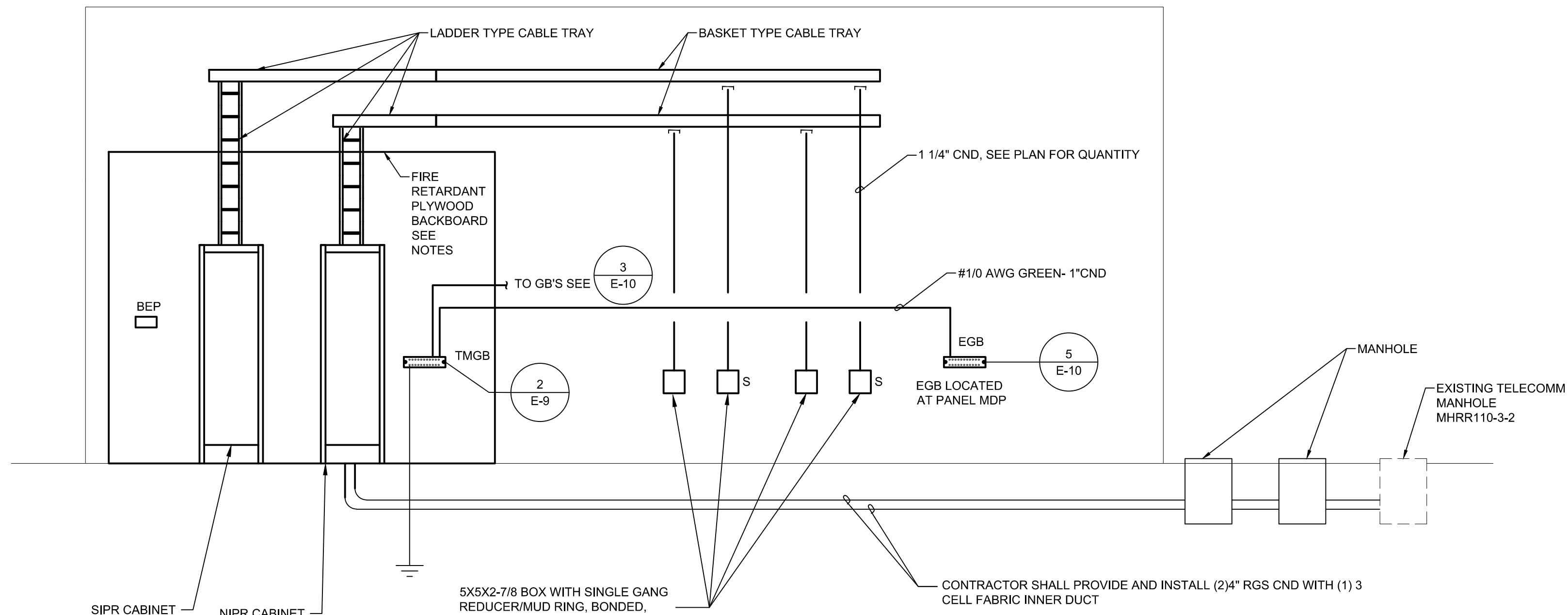
GENERAL NOTES:

- THE CONTRACTOR SHALL VERIFY THE LEAD TIME OF ALL PRODUCTS SPECIFIED IN THIS SCHEDULE AT THE TIME OF PACKAGE QUOTE.
- DURING THE BID PROCESS, THE CONTRACTOR SHALL NOTIFY THE ARCHITECT/ENGINEER OF ANY DELIVERY/SCHEDULING ISSUES.
- NO SUBSTITUTIONS WILL BE ALLOWED DUE TO THE LACK OF COORDINATION OF DELIVERY DATES AND CONSTRUCTION SCHEDULE AFTER BID.
- ALL EXPEDITED EXPENSES SHALL BE THE RESPONSIBILITY OF THE CONTRACTORS.
- FIXTURES TO BE INSTALLED IN CEILINGS, INDICATE ON THE ARCHITECTURAL PLANS AS HAVING INSULATION IN CONTACT WITH THE CEILING SURFACE, SHALL BE IC RATED BY MANUFACTURER.
- LIGHTING FIXTURES SHALL MEET THE AESTHETICS, DESCRIPTION AND SPECIFICATIONS, SUBSTITUTIONS SHALL INCLUDE PT. BY PT. CALCULATIONS.
- LIGHTING FIXTURES, AS SPECIFIED, HAVE BEEN SO SELECTED TO ACHIEVE REQUIRED/DESIRED FOOT-CANDLE LEVELS IN THEIR RESPECTIVE AREA. HENCE SPECIFIC FIXTURE CHARACTERISTICS WHICH MAY CREATE PARTICULAR ILLUMINATION RESULTS ARE ESSENTIAL. ANY DEVIATIONS FROM SPECIFIED FIXTURES SHALL DEEM THE SUBMITTING AGENT AND CONTRACTORS RESPONSIBLE IN PROVIDING SUCH DEVIATION FOR THE ARCHITECT/ENGINEER AND OWNER TO MAKE AN INFORMED DECISION.
- SUBSTITUTIONS ARE ACCEPTABLE AS LONG AS THEY ARE EQUAL TO THE FIXTURE SPECIFIED, UNLESS OTHERWISE NOTED. THIS INCLUDES LENS, COLORS, REFLECTORS, PHOTOMETRICS, HOUSING MATERIAL, FINISHES, ETC. ALL.
- ANY FIXTURE WITH THE TEXT "NL" ADJACENT TO IT SHALL INDICATE THAT THAT FIXTURE IS A NIGHT LIGHT (24HR LIGHT). THE FIXTURE SHALL BE CONNECTED TO THE UNSWITCHED HOT LEG OF THE INDICATED CIRCUIT.
- ACRYLIC PRISMATIC LENSES SHALL BE 0.156" NOMINAL MINIMUM THICKNESS.
- ALL EXIT AND EMERGENCY FIXTURES SHALL COMPLY WITH NCSBC STANDARDS AND HAVE AUTOMATIC TESTING DEVICES.
- LED EMERGENCY BATTERY SHALL PROVIDE 1400 MINIMUM LUMENS OUTPUT FROM 1 LAMP FOR 90 MINUTES MINIMUM.
- LED MODULES SHALL BE REPLACEABLE.
- ELECTRICAL CONTRACTOR SHALL RECEIVE APPROVAL FOR ALL LIGHTING FIXTURES FROM ARCHITECT/OWNER PRIOR TO PURCHASE AND ROUGH-IN. REFER TO ARCHITECTURAL DRAWINGS FOR ADDITIONAL RATINGS.

SEE DISCLOSURE OF INFORMATION STATEMENT ON SHEET G-1

CBHF Engineers, PLLC 2246 Yeppoon Drive Wilmington, NC 28401 Phone: 910.791.4000 Fax: 910.791.5286 www.cbhfengineers.com <small>©Copyright 2012 CBHF Engineers, PLLC NCES-P-0006</small>	SHEET TITLE: ELECTRICAL LIGHTING DETAILS AND SCHEDULE		E-8	
	DES. MDM		DEPARTMENT OF THE NAVY MARINE CORPS BASE CAMP LEJEUVE, NORTH CAROLINA	
	DR. MDM		CONSTRUCT MARSOC G-6 SUPPORT FACILITY CAMP LEJEUVE, NORTH CAROLINA	
	CHK. WAC		CODE IDENT. NO. 80091	
SUBMITTED BY:		NAVFAC DRAWING NO. 60035481		
DESIGN DIR. T. H. BURTON, PE		CONST. CONTR. NO.		
APPROVED:		DATE	SCALE: NOTED	
SATISFACTORY TO:		DATE	SPEC. 05-21-0010	
19 AUG 21		SHEET 41 OF 43		

REVISIONS			DATE	APPROVED
SYN.				



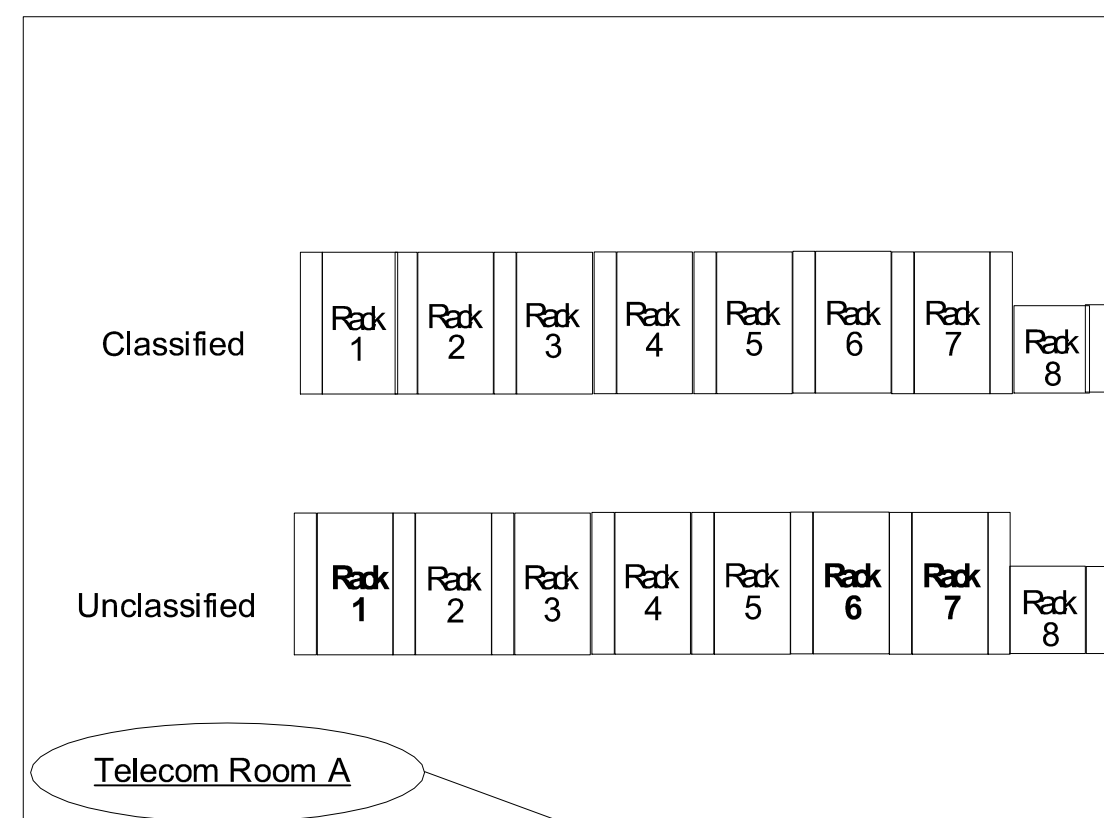
BACKBOARD NOTES

1. INSTALL FIRE RETARDANT SHEATHING ON WALL FOR ENTIRE HEIGHT AND LENGTH OF WALL.
2. THE FOLLOWING DEVICE MUST BE MOUNTED ON BACKBOARD: PROTECTOR / BUILDING ENTRANCE (BEP), TMGB, PROPER BONDING & GROUNDING, CABLE MANAGEMENT AND SLACK ON LADDER RACK.

1 TELECOMMUNICATION RISER

NOT TO SCALE

Labeling Scheme



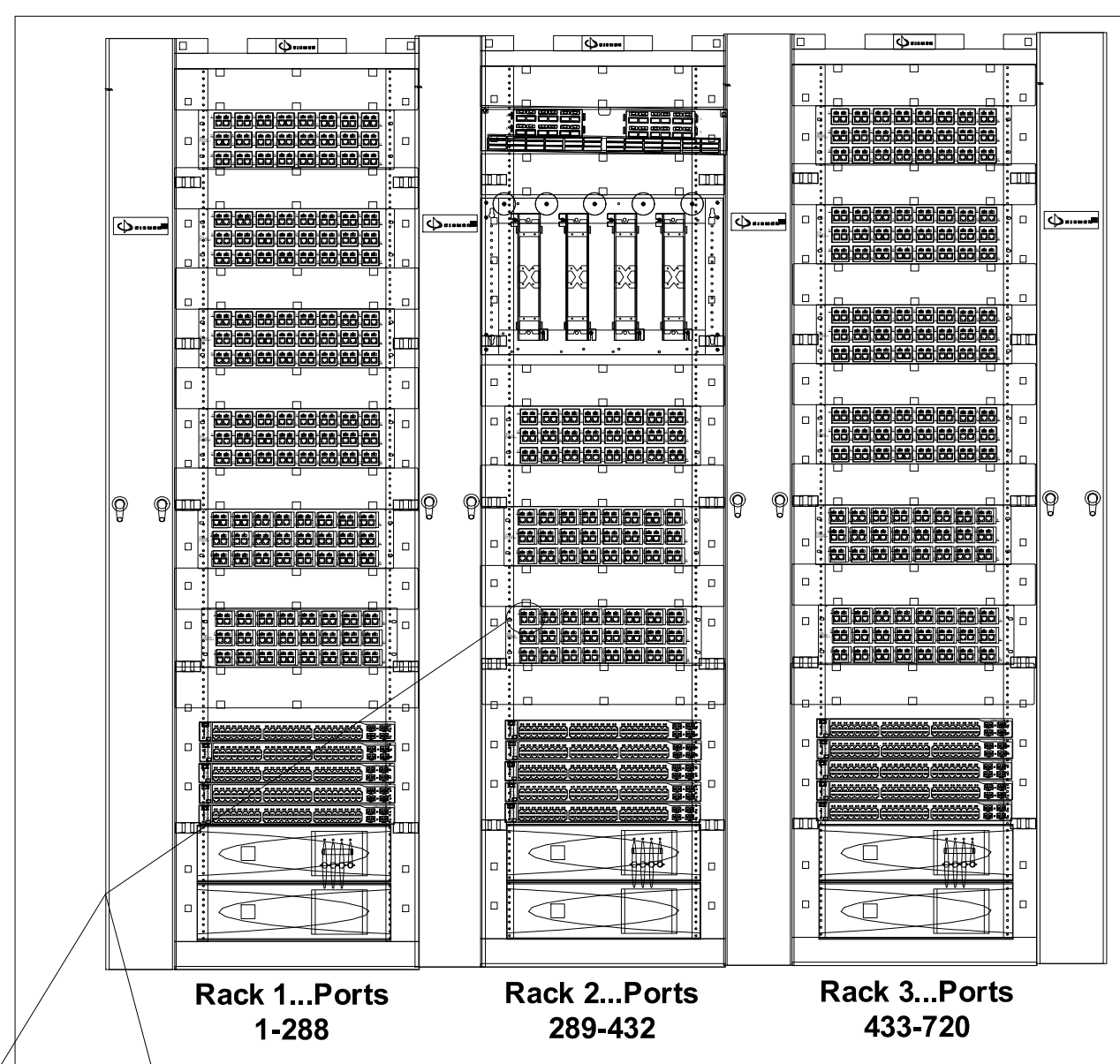
385 A 386

A – identifies Telecom Room

All labels are white
Siemon P/N Ct-FP-LBL-104
W/ Printed Color

U - Green – Unclassified
C - Red – Classified
T - Grey – Top Secret

385 identifies Patch Panel and port



For Classified network

C385 A C386

For top Secret network

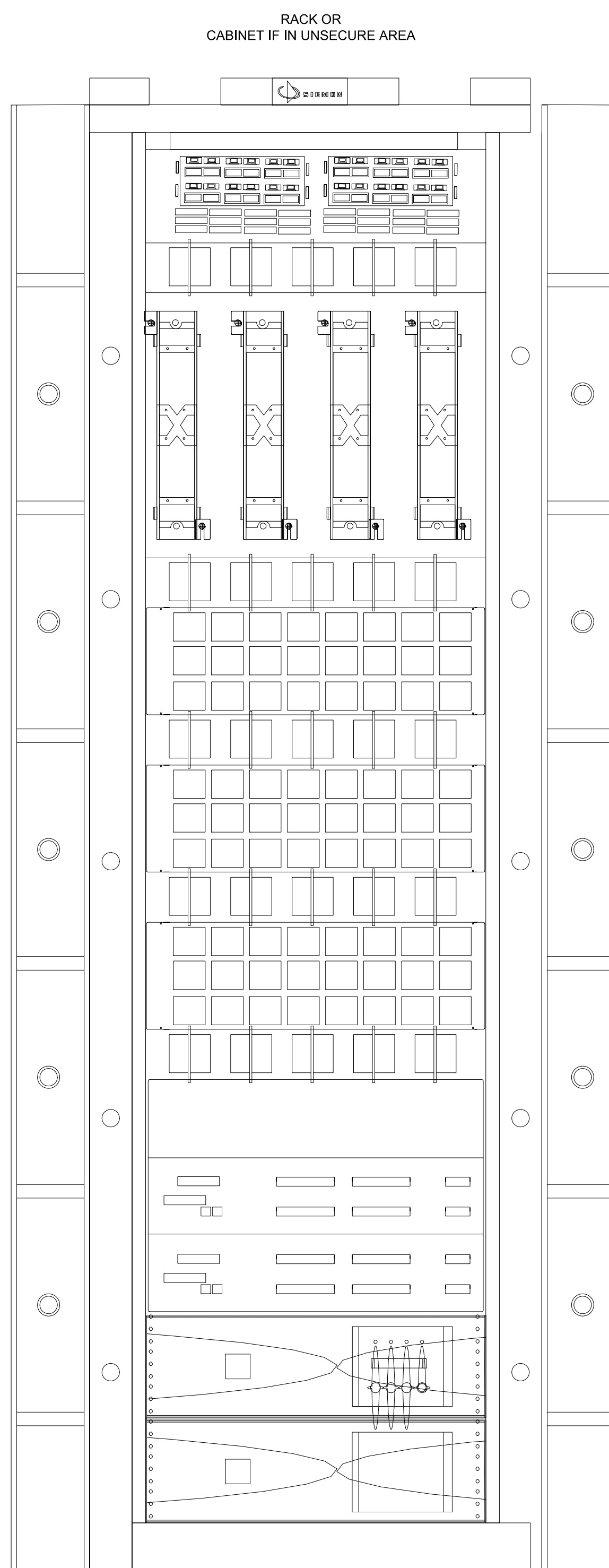
T385 A T386

3 DATA OUTLET LABELING DETAIL

NOT TO SCALE

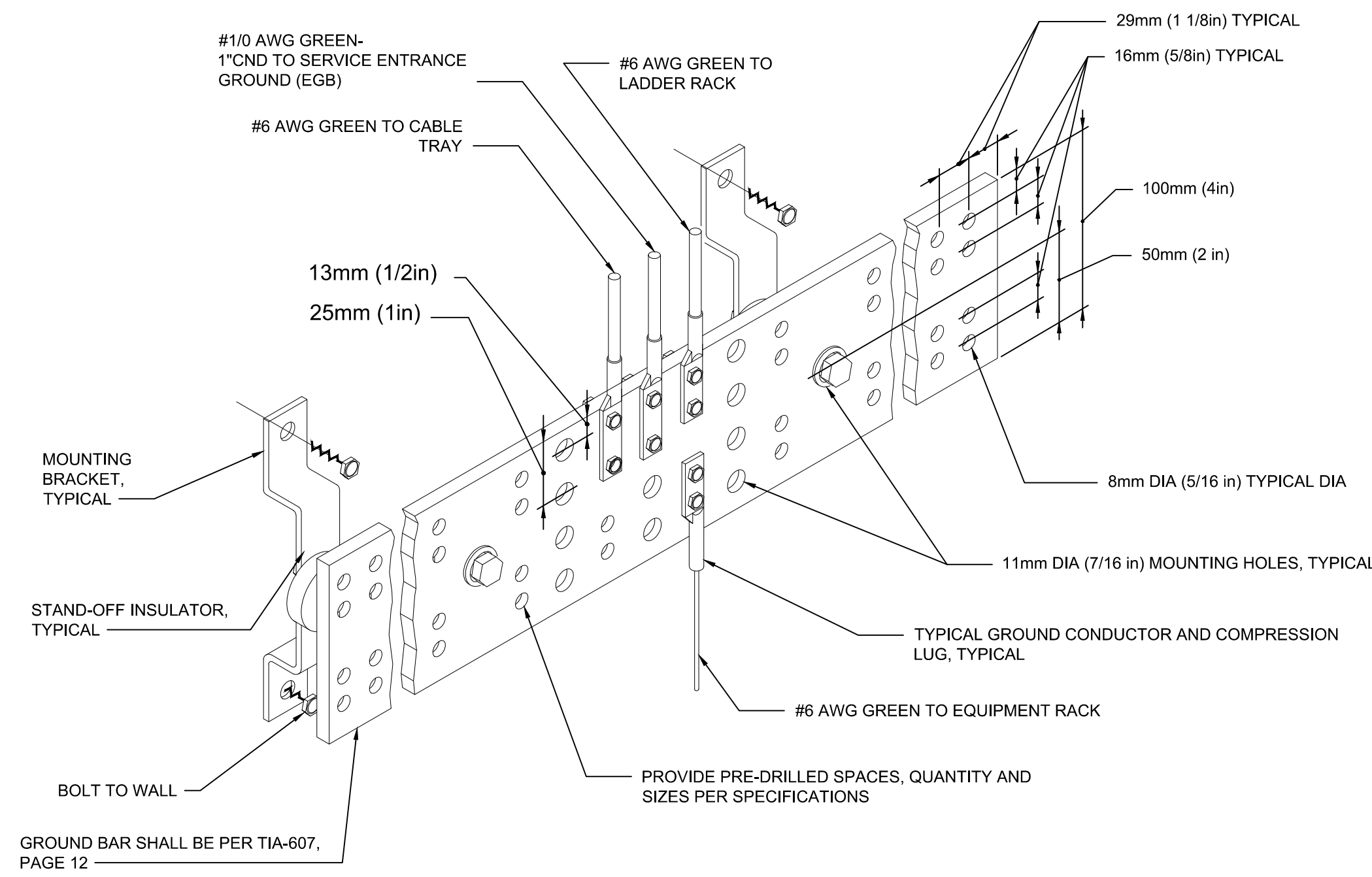
2 TELECOMMUNICATIONS GROUND BAR (TMGB) DETAIL

NOT TO SCALE



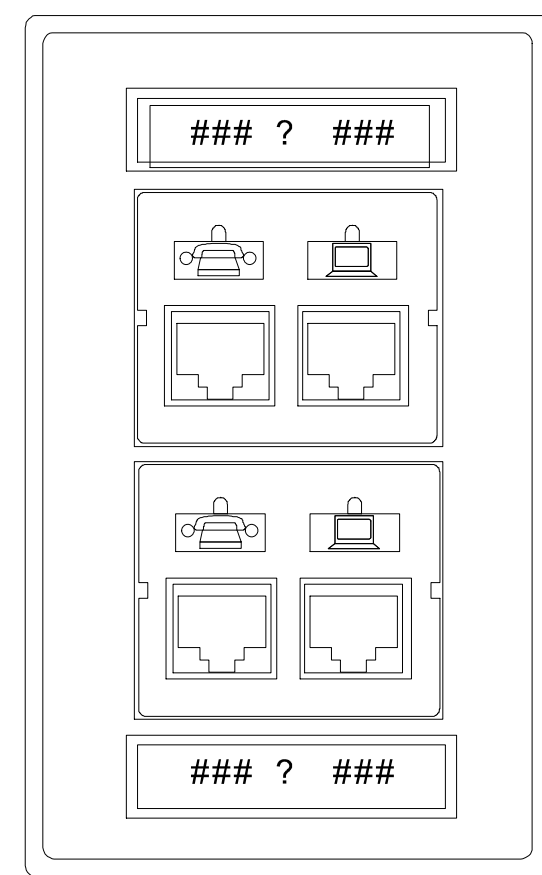
6 ENCLOSURE A RACK ELEVATION EXAMPLE

NOT TO SCALE



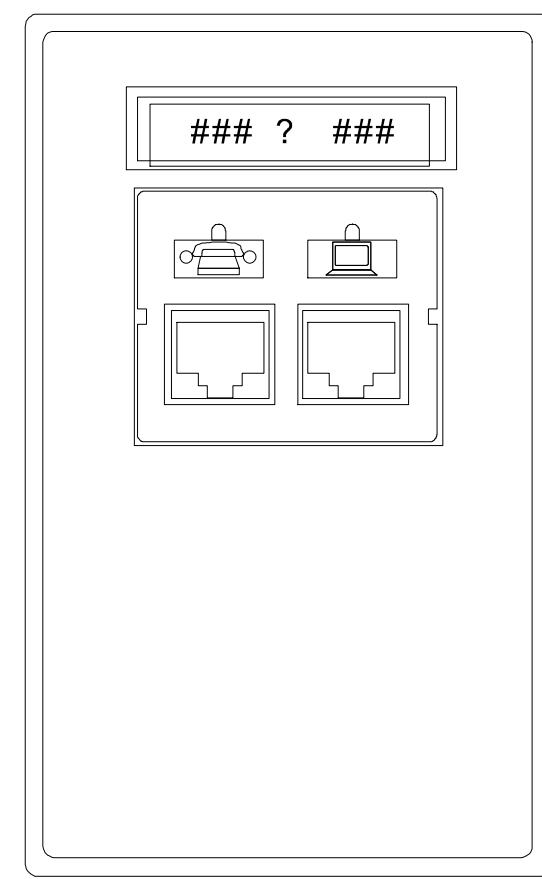
4 TYPICAL DATA OUTLET DETAIL

NOT TO SCALE



5 WAP, DDC & FACP DATA OUTLET DETAIL

NOT TO SCALE



SEE DISCLOSURE OF INFORMATION STATEMENT ON SHEET G-1

CBHF Engineers, PLLC 2246 Yeapen Drive Wilmington, NC 28401 Phone: 910.791.4000 Fax: 910.791.5206 www.cbhfenr.com		SHEET TITLE: ELECTRICAL TELECOMMUNICATION DETAILS		E-9	
DES. MDM		DR. MDM		SUBMITTED BY:	
CHK. WAC		DESIGN DIR. T.H. BURTON, PE		APPROVED:	
SATISFACTORY TO:		DATE		SIZE	
		DATE		CODE IDENT. NO.	
				NAVJAC DRAWING NO.	
				CONST. CONTR. NO.	
				SCALE: NOTED	
				SPEC. 05-21-0010	
				SHEET 42 OF 43	