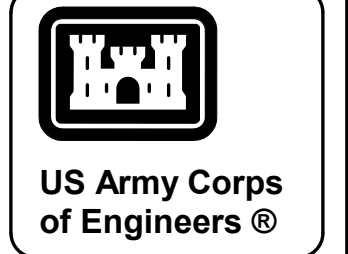


1 FOUNDATION PLAN - AREA A

SCALE: 1/8"=1'-0" 8 6 4 2 0 8 16

PLAN NOTES		PLAN NOTES	PLAN LEGEND	PLAN LEGEND	KEY PLAN
1 2 3 4 5 6 7 8 9	FOR GENERAL STRUCTURAL NOTES AND ABBREVIATIONS, SEE S-001 AND S-002.	10. SLAB-ON-GRADE AT ALL INTERIOR CONDITIONS SHALL BE PLACED 10 MIL VAPOR RETARDER ON A 4" LAYER OF COMPACTED GRANULAR FILL.	1 SLAB-ON-GRADE SHALL CONSIST OF 4" THICK CONCRETE REINFORCED WITH 6X6 W2.1XW2.1 WWF LOCATED AT 1/3-DEPTH FROM TOP OF SLAB.	6 8" THICK CONCRETE CAP OVERHEAD REINFORCED WITH #5 BARS @ 12" OC EW, CENTERED IN CAP. BOTTOM OF CAP AT 10' - 0" AFF. EXTENT SHALL BE AS REQUIRED TO COVER PERIMETER OF ROOM.	
	SEE SF201 AND FOLLOWING FOR FRAMING ELEVATIONS.	11. PROVIDE (2) #4 X 4'-0" LONG AT CENTER OF SLAB-ON-GRADE AT ALL RE-ENTRANT CORNERS AND WHERE A CONTRACTION JOINT TERMINATES AT A CONTRACTION JOINT.	2 SLAB-ON-GRADE SHALL CONSIST OF 6" THICK CONCRETE REINFORCED WITH 6X6 W2.1XW2.1 WWF LOCATED AT 1/3-DEPTH FROM TOP OF SLAB.		
	SEE SB501 AND FOLLOWING FOR FOUNDATION SECTIONS AND DETAILS.	12. JOINT LOCATIONS DENOTED BY CJ ARE DIAGRAMMATIC ONLY AND DO NOT REPRESENT ALL JOINTS REQUIRED FOR SLAB CONSTRUCTION. CONTRACTOR SHALL COORDINATE SLAB-ON-GRADE REQUIREMENTS WITH SLAB-ON-GRADE CONSTRUCTION SEQUENCING AND SLAB DETAILS ON SB501. JOINT SPACING SHALL NOT EXCEED MAXIMUM JOINT SPACING PER ACI REQUIREMENTS.	3 SLAB-ON-GRADE SHALL CONSIST OF 8" THICK CONCRETE REINFORCED WITH (2) LAYERS OF 4X4 W2.9XW2.9 WWF LOCATED AT 2" FROM TOP AND BOTTOM OF SLAB.		
	TOP OF CONCRETE SLAB-ON-GRADE ELEVATION = 0'-0". ALL ELEVATIONS INDICATED FROM THIS DATUM. SEE CIVIL FOR EXACT ELEVATION.	13. COORDINATE UNDERGROUND UTILITY LINES WITH CIVIL, PLUMBING, AND FIRE PROTECTION DRAWINGS PRIOR TO CONSTRUCTION OF FOOTINGS AND SLABS-ON-GRADE.	4 SLAB-ON-GRADE SHALL CONSIST OF 9" THICK CONCRETE REINFORCED WITH (2) LAYERS OF 4X4 W2.9XW2.9 WWF LOCATED AT 2" FROM TOP AND BOTTOM OF SLAB.		
	ALL FOOTINGS SHALL BE CENTERED UNDER COLUMNS AND WALLS, UNO.		5 SLAB-ON-GRADE SHALL CONSIST OF 12" THICK CONCRETE REINFORCED WITH (2) LAYERS OF 4X4 W2.9XW2.9 WWF LOCATED AT 2" FROM TOP AND BOTTOM OF SLAB.		
	CF-X INDICATES COLUMN FOOTING. SEE FOOTING SCHEDULE ON SB601 FOR SIZE AND REINFORCEMENT.				
	WF-X INDICATES WALL FOOTING. SEE FOOTING SCHEDULE ON SB601 FOR SIZE AND REINFORCEMENT.				
	TOP OF FTG. = (-) 2'- 0" UNO.				
	ALL INTERIOR MASONRY WALLS EXTEND TO THE UNDERSIDE OF STRUCTURE ABOVE UNO.				



DATE	DESCRIPTION	MARK
22JUN2018	REVISED IN ACCORDANCE WITH AMENDMENT 003	1

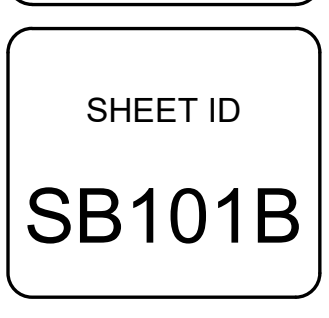
DESIGN BY: M. VANDERKAM	ISSUE DATE: JUN 2018
DRAWN BY: JAW	PROJECT NO.: 18-001
CHECKED BY: JAW	CONTRACT NO.:
SUBMITTED BY: JAW	CATEGORY CODE:
SIZE: ANSI D	FILE NAME:

U.S. ARMY CORPS OF ENGINEERS
SAVANNAH DISTRICT
SAVANNAH, GEORGIA 31401

...

FORT GORDON, GEORGIA ARCYBER COMPANY OPERATIONS FACILITY PN85794	FOUNDATION PLAN - AREA A
--	--------------------------

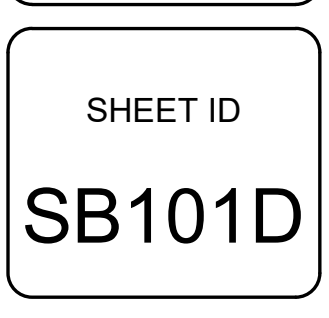
SHEET ID SB101A





C:\Users\K6ENXMLV\Documents\FY17PN85794_STRUC_R18_K6ENXMLV.rvt
6/19/2018 10:34:42 AM

SHEET ID
SB101C



[illegible]